

Property ref: 109629

## Riverside View, Reading, RG1 6FF

£2,000 PCM

**HASLAM'S**  
Lettings



This modern two bedroom apartment has access onto its own private terrace, which looks directly onto the calming River Kennet. An impressive open plan kitchen / living area also opens onto the north facing balcony, and with its luxury fixtures and fittings, this town centre apartment is ideal for professionals. Reading Borough Council tax band D.

**Available 23/07/2026**

- Two double bedrooms; Master with en-suite
- Fully fitted kitchen with appliances
- Gas central heating; EPC rating B
- Allocated undercroft parking; Private terrace
- Furnished; River views
- Managed by HASLAM'S

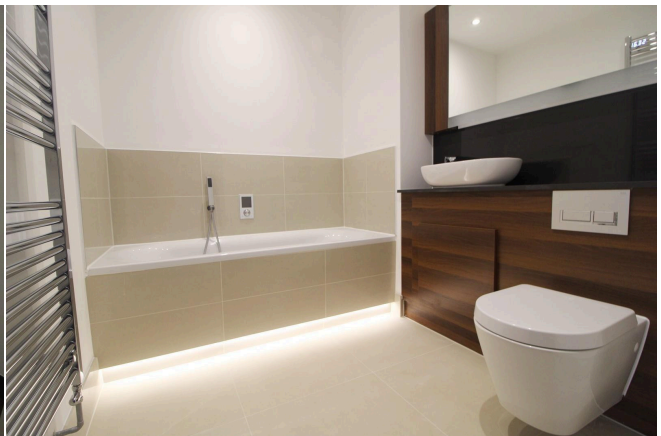
\*Fees For Assured Periodic Tenancies: when you rent a property from us you will be required to pay a sum equivalent to one weeks' rent for a holding deposit. Upon successful application, this amount will be off set against your first months' rent. You will also be required to pay a security deposit equivalent to 5 weeks' rent which will be held and protected in line with Deposit legislation. For more information about our fees please visit: [www.haslams.net](http://www.haslams.net)  
Fees for all other tenancies (Non Housing Act Tenancies / Company Lets): when you rent a property from us we will charge you a one-off fee per property. This charge is the equivalent of 15 days of the monthly rental charge (+VAT) with a minimum fee of £450 (inc.VAT) up to a maximum of £650 (inc.VAT). Other fees may apply depending on your circumstances.

**0118 960 1055**

**[lettings@haslams.net](mailto:lettings@haslams.net) [www.haslams.net](http://www.haslams.net)**

**Haslams Estate Agents Ltd, 159 Friar Street, Reading, Berkshire, RG1 1HE**

Broadband/Mobile Info: Connections available. For an indication of specific speeds and supply of Broadband and Mobile, we advise applicants go to the Ofcom website Broadband and Mobile Coverage Checker.

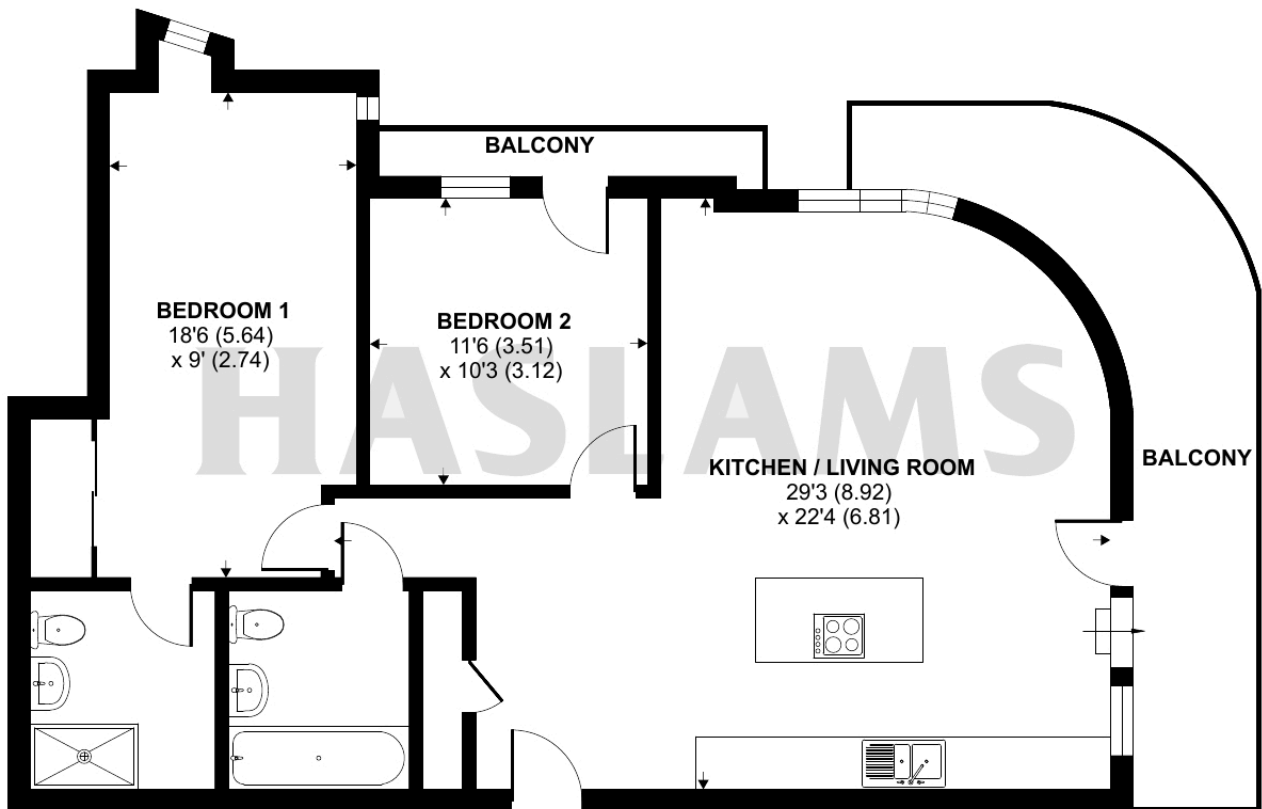




# Berkeley Avenue, Reading, RG1

Approximate Area = 906 sq ft / 84.1 sq m

For identification only - Not to scale



**NINTH FLOOR**

 Floor plan produced in accordance with RICS Property Measurement 2nd Edition, Incorporating International Property Measurement Standards (IPMS2 Residential). © n̄checom 2024. Produced for Haslam's. REF: 1203508