



St. Lawrence Road, North Wingfield Chesterfield S42 5LJ



welcome to

St. Lawrence Road, North Wingfield Chesterfield

A spacious and versatile three-bedroom home offering a superb open-plan kitchen/dining room, utility room, ground-floor principal bedroom with en-suite, two first-floor bedrooms, family bathroom, driveway parking and a private rear garden.

Driveway

A private driveway to the front of the property provides off-road parking and gives access to the main entrance. The frontage offers a welcoming approach to the home.

Hall

Entering through the front door, the hallway provides access to the principal ground floor accommodation, including Bedroom One and the impressive open-plan kitchen/dining room. Stairs rise to the first-floor accommodation.

Kitchen / Dining Room

An outstanding open-plan kitchen and dining space, creating the heart of the home. The kitchen is fitted with a range of units incorporating work surfaces, with ample space for additional appliances. The generous dining and living area offers excellent versatility for everyday family life and entertaining, with multiple windows and doors allowing plenty of natural light to flow throughout.

Utility

Accessed from the kitchen, the useful utility room provides additional storage and appliance space, with work surfaces and external access to the outside, making it ideal for practical day-to-day use.

Bedroom One

A well-proportioned ground-floor double bedroom overlooking the side aspect. The room benefits from convenient access to a private en-suite shower room, creating an excellent principal bedroom suite or guest accommodation.

En-Suite

Fitted with a three-piece suite comprising a shower enclosure, wash hand basin and WC. A practical and private addition to the principal bedroom.

Stairs / Landing

The staircase rises from the hallway to the first-floor landing, which provides access to two further bedrooms and the family bathroom.

Bedroom Two

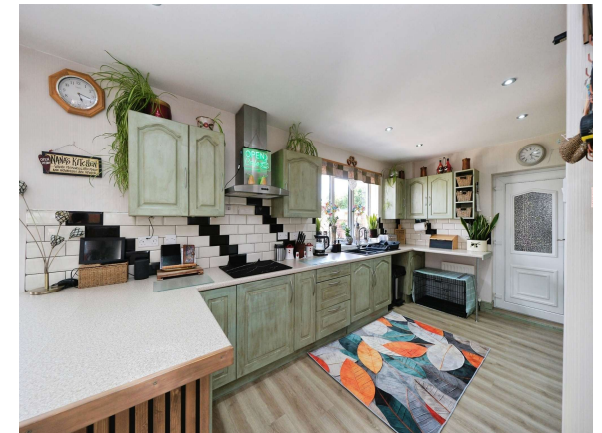
A spacious double bedroom extending across much of the first floor, featuring fitted storage and ample space for bedroom furniture. Natural light is provided via windows to the front and side aspects.

Bedroom Three

A good-sized third bedroom benefiting from fitted wardrobes/storage and a rear-facing window. Ideal as a child's bedroom, guest room or home office.

Bathroom

The family bathroom is fitted with a three-piece suite comprising a panelled bath, wash hand basin and WC. A window provides natural light and ventilation.



Rear Garden

The rear garden offers a private outdoor space ideal for relaxing, entertaining and family enjoyment. Providing scope for patio seating, planting and lawned areas, it complements the internal accommodation and enhances the property's appeal.



view this property online williamhbrown.co.uk/Property/CSF105343



welcome to

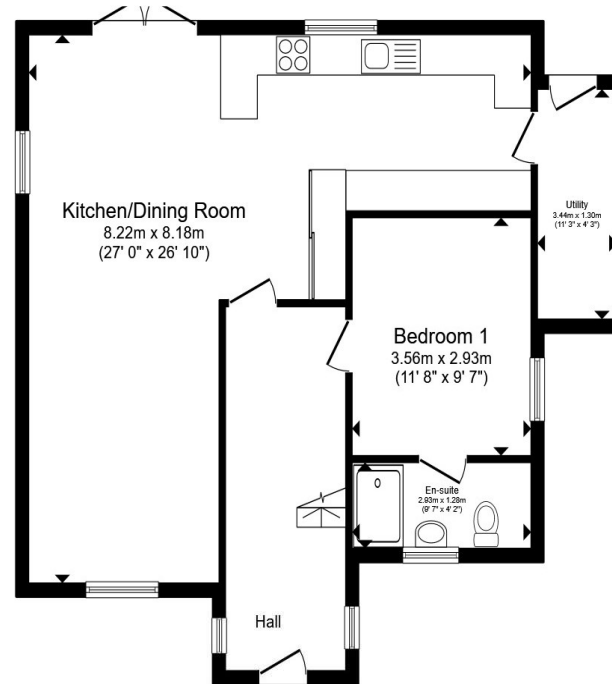
St. Lawrence Road, North Wingfield Chesterfield

- Council Tax Band - C
- Spacious Three-Bedroom Home
- Ground-Floor Principal Bedroom With En-Suite
- Useful Separate Utility Room
- Driveway Providing Off-Road Parking

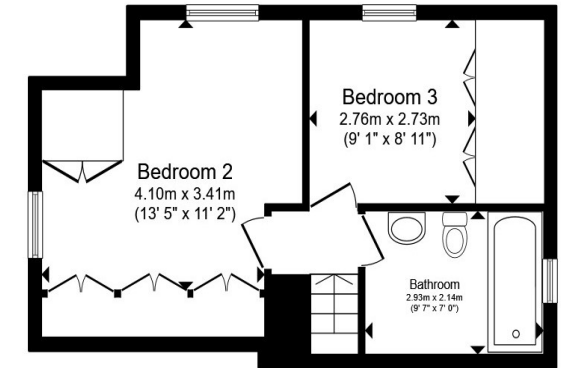
Tenure: Freehold EPC Rating: C

Council Tax Band: C

£300,000



Ground Floor



First Floor

Total floor area 111.5 m² (1,200 sq.ft.) approx

This floor plan is for illustrative purposes only. It is not drawn to scale. Any measurements, floor areas (including any total floor area), openings and orientation are approximate. No details are guaranteed, they cannot be relied upon for any purpose and they do not form part of any agreement. No liability is taken for any error, omission or misstatement. A party must rely upon its own inspection(s). Powered by www.propertybox.io



view this property online williamhbrown.co.uk/Property/CSF105343



Property Ref:
CSF105343 - 0002

1. MONEY LAUNDERING REGULATIONS Intending purchasers will be asked to produce identification documentation at a later stage and we would ask for your co-operation in order that there is no delay in agreeing the sale. 2. These particulars do not constitute part or all of an offer or contract. 3. The measurements indicated are supplied for guidance only and as such must be considered incorrect. Potential buyers are advised to recheck measurements before committing to any expense. 4. We have not tested any apparatus, equipment, fixtures or services and it is in the buyers interest to check the working condition of any appliances. 5. Where an EPC, or a Home Report (Scotland only) is held for this property, it is available for inspection at the branch by appointment. If you require a printed version of a Home Report, you will need to pay a reasonable production charge reflecting printing and other costs. 6. We are not able to offer an opinion either written or verbal on the content of these reports and this must be obtained from your legal representative. 7. Whilst we take care in preparing these reports, a buyer should ensure that his/her legal representative confirms as soon as possible all matters relating to title including the extent and boundaries of the property and other important matters before exchange of contracts.

William H Brown is a trading name of Sequence (UK) Limited which is registered in England and Wales under company number 4268443, Registered Office is Cumbria House, 16-20 Hockliffe Street, Leighton Buzzard, Bedfordshire, LU7 1GN. VAT Registration Number is 500 2481 05.


william h brown



01246 204492



chesterfield@williamhbrown.co.uk



6 Glumangate, CHESTERFIELD, Derbyshire, S40
1TP



williamhbrown.co.uk