



Eastcourt Lane, Gillingham ME8 6HG

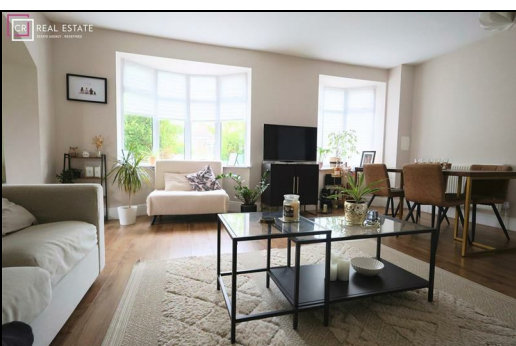
Guide Price £380,000

Guide Price - £380,000 - £400,000.

CR Real Estate are delighted to present this beautifully refurbished chalet bungalow, ideally situated in a sought-after residential location. Offering generous and versatile living accommodation throughout, the property features a stylish fitted kitchen, a modern family bathroom, and two contemporary en suite shower rooms.

Finished to a high standard, this impressive home must be viewed internally to fully appreciate the space, quality, and lifestyle on offer. Further benefits include a private enclosed rear garden, garage, and off-road parking to the rear.

Early viewing is highly recommended – please contact us today to arrange your appointment.



Entrance Hall

Living Room 18'2 x 16'1 (5.54m x 4.90m)

Kitchen/Diner 16'1 x 8'8 (4.90m x 2.64m)

Bedroom 12'2 x 10'11 (3.71m x 3.33m)

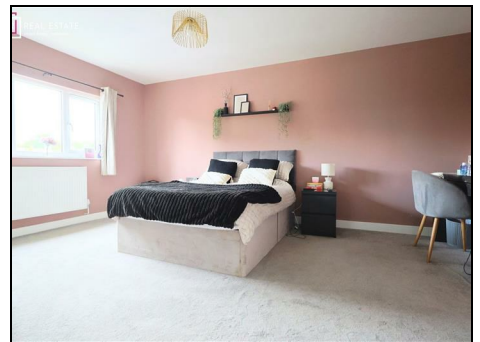
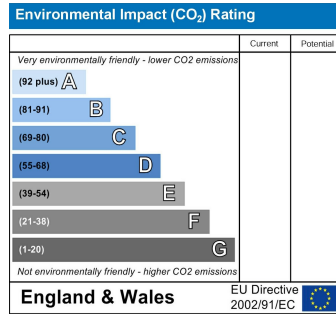
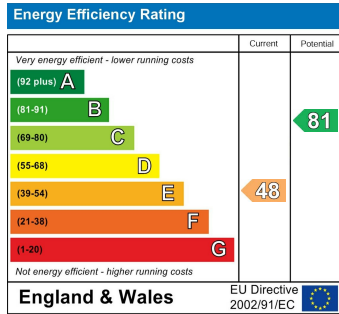
Bathroom 7'10 x 5'0 (2.39m x 1.52m)

Bedroom 16'1 x 11'5 (4.90m x 3.48m)

En Suite 9'0 x 4'10 (2.74m x 1.47m)

Bedroom 16'1 x 9'7 (4.90m x 2.92m)

En Suite 9'0 x 5'3 (2.74m x 1.60m)



ESTATE AGENCY : REDEFINED

