



**POOLE
TOWNSEND**

Milnthorpe Road, Kendal, LA9 5HE

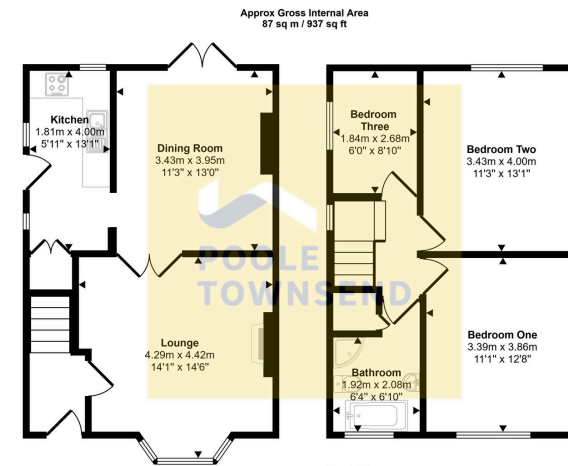
£280,000

🛏️ 3 🚽 1 🚗 2



- Semi-Detached Property
- Two Versatile Reception Rooms
- Stylish Four Piece Bathroom
- Lawn and Patio Areas
- Tenure: Freehold
- 3 Bedrooms
- Bright and Airy Rooms
- No Onward Chain
- Off Road Parking for 2 Vehicles
- Council Tax Band: C





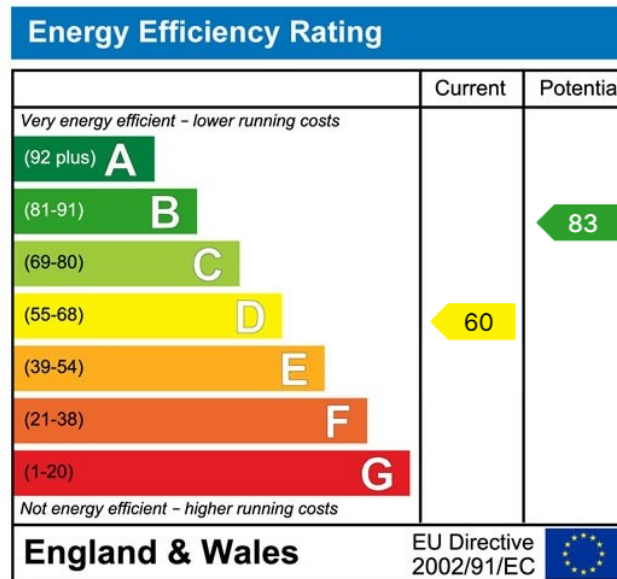
Approx Gross Internal Area
87 sq m / 937 sq ft

Ground Floor
Approx 44 sq m / 470 sq ft

First Floor
Approx 43 sq m / 467 sq ft

This floorplan is only for illustrative purposes and is not to scale. Measurements of rooms, doors, windows, and any items are approximate and no responsibility is taken for any error, omission or mis-statement. Icons of items such as bathroom suites are representations only and may not look like the real items. Made with Made Snappy 360.

Prominently positioned along Milnthorpe Road, one of the main routes into the sought-after Lakeland town of Kendal, this attractive semi-detached home offers a fantastic opportunity for buyers to personalise and modernise to their own tastes. Offered with no onward chain, the property provides well-proportioned accommodation throughout, including two bright reception rooms and a separate kitchen to the ground floor, together with three generously sized bedrooms and a four-piece bathroom to the first floor. Externally, the property benefits from off-road parking for two vehicles and an enclosed rear garden featuring both lawn and patio areas, ideal for outdoor relaxation and entertaining.



Visit us at
www.pooletownsend.co.uk
enquiries@pooletownsend.co.uk

We are open
 Monday – Friday 9.00 – 5.00
 Saturday 9.00 – 1.00

Barrow 01229 811811
 Ulverston 01229 588111
 Grange 015395 33316
 Kendal 01539 734455
 Milnthorpe 015395 62044