



Guide Price
£950,000

Freehold

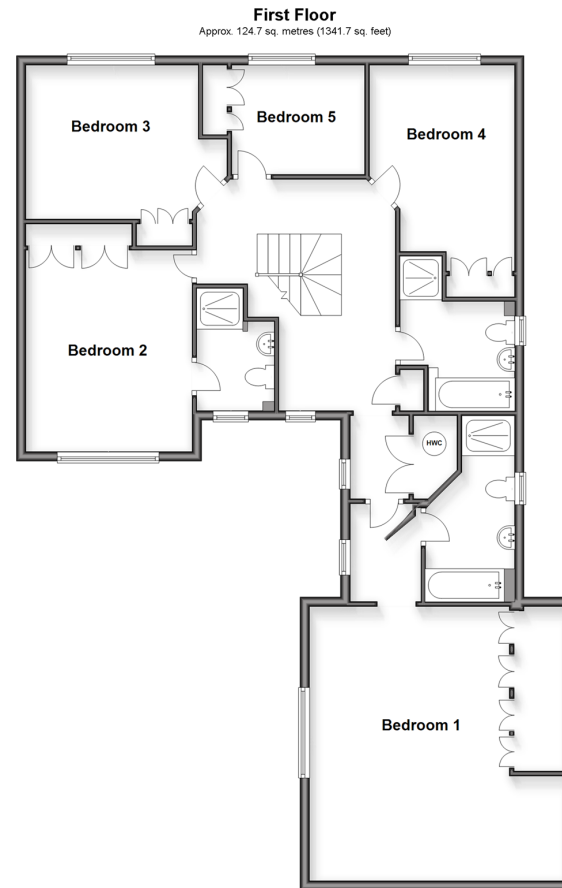
5x  2x  2x 

**Bovarde Avenue, Kings
Hill, West Malling, Kent,
ME19**

OVER 60?

Secure this property
for up to **59% less!**

Wards
Helping you move forwards



Accommodation

GROUND FLOOR

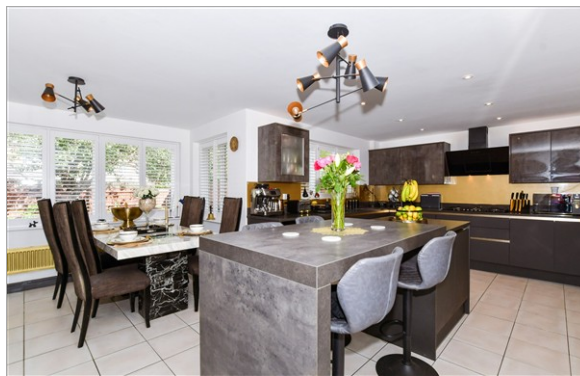
Entrance Hall
Cloakroom
Study: 11'8 x 6'8 (3.56m x 2.03m)
Lounge: 19'4 x 11'8 (5.90m x 3.56m)
Dining Room: 11'5 x 11'5 (3.48m x 3.48m)
Kitchen/Breakfast Room: 21'8 x 16'7 (6.61m x 5.06m)
Utility Room

FIRST FLOOR

Landing
Bedroom 1: 19'11 x 18'9 Extending to (6.07m x 5.72m)
En-Suite Shower Room
Bedroom 2: 14'0 x 11'5 (4.27m x 3.48m)
En-Suite Shower Room
Bedroom 3: 14'3 x 10'3 (4.35m x 3.13m)
Bedroom 4: 14'0 x 10'6 (4.27m x 3.20m)
Bedroom 5: 9'3 x 7'6 (2.82m x 2.29m)
Bathroom

OUTSIDE

Front & Rear Gardens
Double Garage & Driveway



Main features

- Substantial detached house set on large corner plot with ample parking
- Spacious & upgraded kitchen area
- Located within a short walk to amenities
- Ideal family home with large bedrooms throughout
- Spacious & secluded garden to the rear

Nearest Schools

Primary Schools: The Discovery School 0.5 miles, Valley Invicta Primary 0.6 miles, Kings Hill School 0.8 miles
Secondary Schools: St Augustine Academy 3.7 miles, Oakwood Park Grammar School 3.7 miles, Holmesdale Technology College 3.8 miles

Transport Information

Train Stations: West Malling 2.4 miles, Aylesford 3.1 miles, New Hythe 3.5 miles

Address

Bovarde Avenue, Kings Hill, West Malling, Kent, ME19

Directions

For directions to this property please contact us.



Wards
Helping you move forwards

Call Kings Hill Branch 01732 222211 ■ wardsof Kent.co.uk



- Legal advice should be taken to verify fixtures/fittings, planning, alterations and/or lease details
- Appliances & services are untested, dimensions are approximate and floor plans are not to scale
- Through a Homewise Home For Life Plan people aged 60+ can secure this property for up to 59% less, by purchasing a Lifetime Lease



12405256/20260131/BC/WA