



Rotherhithe Street, SE16

£2,200 Per calendar month

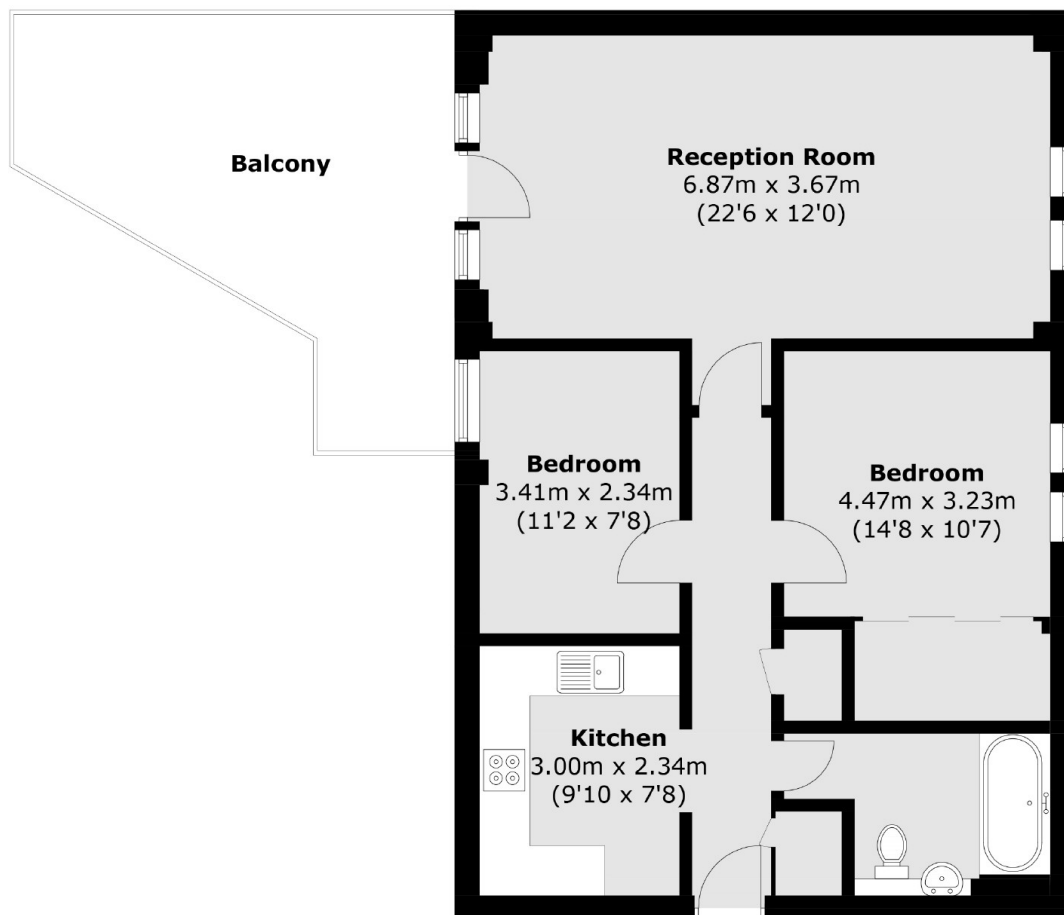
A well presented two bedroom property offering a private terrace with views of River Thames. This flat also benefits from double aspect windows, separate kitchen and underground parking.

Codrington Court is a sought after development overlooking the river. There are easy bus links to Canada Water Station which is on the Jubilee Line. Surrey Quays shopping is also conveniently located nearby.

Features

- Two Bedrooms
- Private Terrace
- Secure Parking
- Furnished
- Rotherhithe
- Secure Entry

Rotherhithe Street, London, SE16



Total area (approx.): 71.1 sq. m (765.3 sq. ft)
Balcony area (approx.): 19.1 sq. m (205.5 sq. ft)