

Addison Road
Holland Park, W14

Dexters



Addison Road
Holland Park



About the property

This exceptional seven bedroom detached residence on Addison Road, W14 offers the pinnacle of luxury living just moments from the open green spaces of Holland Park.

The home is set behind secure gates and arranged over multiple floors, offering an abundance of natural light, generous proportions, premium leisure facilities and a seamless blend of classic elegance with contemporary design.

Both the garden and terrace have been expertly designed by RHS Chelsea Flower Show Gold Medal winner Kate Gould. The private driveway provides parking for two or three cars, the internal lift accesses all floors and the indoor swimming pool extends to over 12m.

Addison Road is located within walking distance of Holland Park and the amenities of Kensington High Street, this is a rare opportunity to rent a truly attractive home in a highly sought after postcode.



Key features

Detached Seven Bedroom House
State-of-the-art Cinema Room
Internal Lift
40ft Swimming Pool & Jazuzzi
Steam Room & Sauna
Multi Off-Street Parking



*images are virtually staged

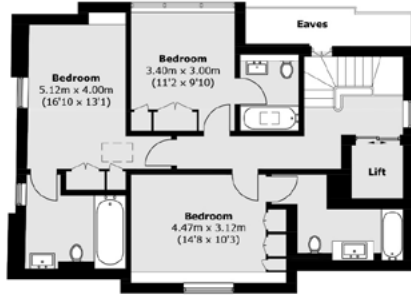




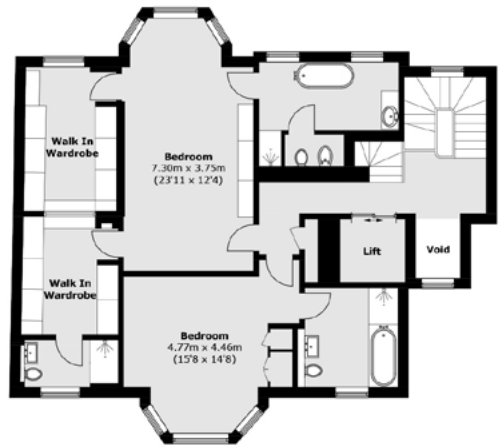


*Image is virtually staged

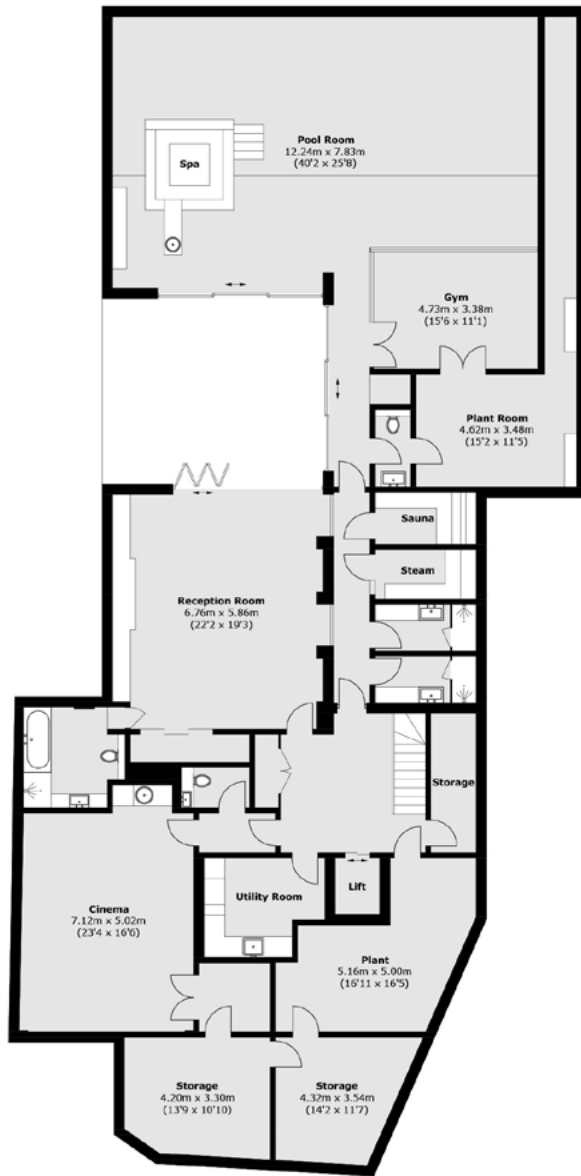




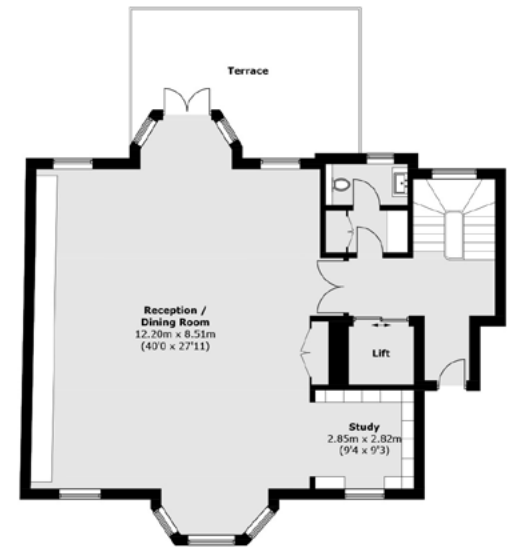
Second Floor



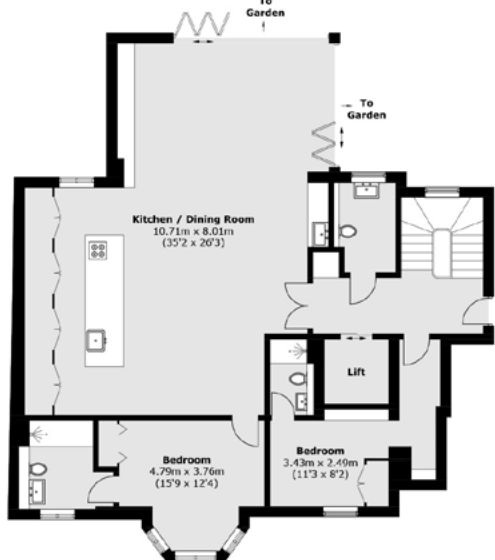
First Floor



Basement



Raised Ground Floor



Lower Ground Floor

**TOTAL APPROX. FLOOR AREA 8,786.5 SQ. FT (816.3 SQ. M)
(INCLUDING LIFTS/BASEMENT/EXCLUDING EAVES)**

Energy Rating: D. We aim to make our particulars both accurate and reliable. However they are not guaranteed; nor do they form part of an offer or contract. If you require clarification on any points then please contact us, especially if you're traveling some distance to view. Please note that appliances and heating systems have not been tested and therefore no warranties can be given as to their good working order.



Dexters Notting Hill
121 Notting Hill Gate,
London, W11 3LB
020 7792 0792

Dexters

Dexters