




West Park Avenue, Birmingham, B31

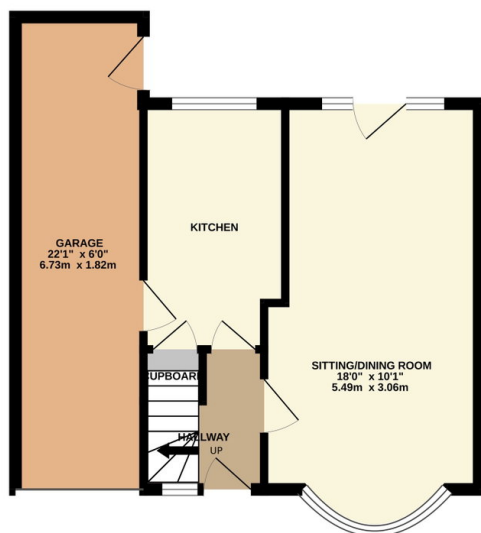
£240,000

 2  1  1

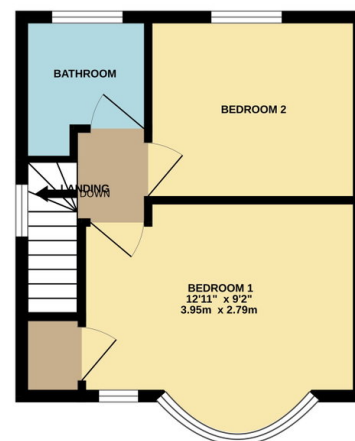


- Immaculately presented 2-bed semi on West Park Avenue.
- Master bedroom includes built-in wardrobe and front bay.
- Front driveway with block paving and privet hedging.
- Large rear garden with patio area.
- Spacious lounge and dining area with front bay window.
- Modern bathroom with white suite and grey tiles.
- Single garage.
- Freehold - Fully double glazed - Central Heating.

GROUND FLOOR



1ST FLOOR



TOTAL FLOOR AREA : 614sq.ft. (57.0 sq.m.) approx.

Whilst every attempt has been made to ensure the accuracy of the floorplan contained here, measurements of doors, windows, rooms and any other items are approximate and no responsibility is taken for any error, omission or mis-statement. This plan is for illustrative purposes only and should be used as such by any prospective purchaser. The services, systems and appliances shown have not been tested and no guarantee as to their operability or efficiency can be given.
Made with Metropix ©2026

Immaculately Presented 2-Bedroom Semi-Detached Home on West Park Avenue, Birmingham, B31

This stunning semi-detached property offers a beautifully maintained and spacious living environment, perfectly suited for family life and modern living.