



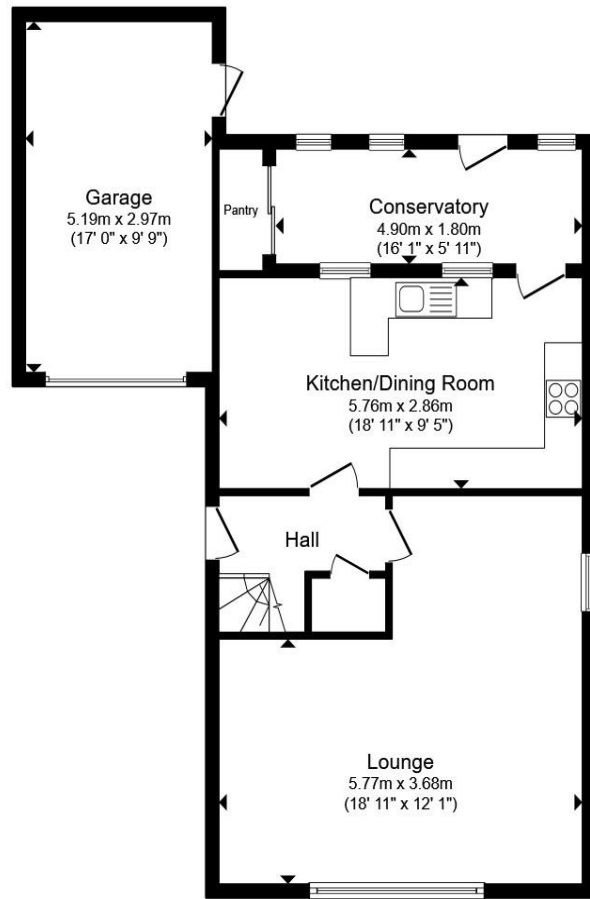
Milton Drive, Leverington Wisbech PE13 5DF

Welcome to

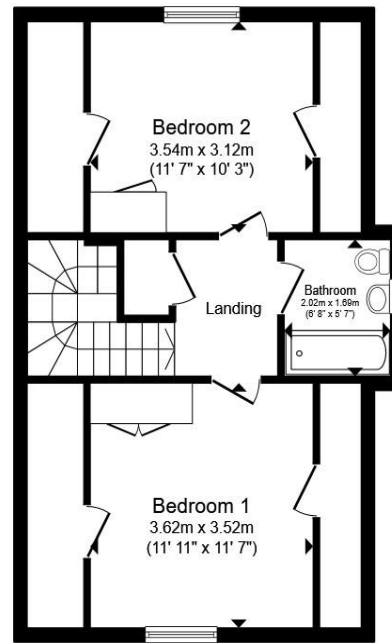
Milton Drive, Leverington Wisbech

Situated on Milton Drive in the popular village of Leverington, this versatile two bedroom chalet bungalow (formerly three bedrooms) offers generous living space and is available with no onward chain. The property has been thoughtfully reconfigured to create a large kitchen/diner, formed by opening up the original third ground floor bedroom, resulting in a fantastic space for cooking, dining and entertaining. The property then expands into a conservatory which overlooks a large rear garden. The ground floor also comprises a comfortable lounge with a gas fireplace, adding further practicality. Upstairs, there are two good sized double bedrooms along with a family bathroom, making the layout ideal for a range of buyers. not to forget it has eaves storage in both rooms. Externally, the property boasts a substantial front garden providing extensive off-road parking for multiple vehicles, along with a good size rear garden, offering plenty of outdoor space. Furniture within the property can be available by separate negotiation. A flexible home with excellent space and potential, located in a desirable village setting - early viewing is highly recommended





Ground Floor



First Floor

- Entrance Hall**
- Lounge**
- Kitchen / Dining Room**
- Conservatory**
- Pantry**
- First Floor Landing**
- Bedroom One**
- Bedroom Two**
- Bathroom**
- Garage**

Total floor area 132.3 m² (1,424 sq.ft.) approx

This floor plan is for illustrative purposes only. It is not drawn to scale. Any measurements, floor areas (including any total floor area), openings and orientation are approximate. No details are guaranteed, they cannot be relied upon for any purpose and they do not form part of any agreement. No liability is taken for any error, omission or misstatement. A party must rely upon its own inspection(s). Powered by www.propertybox.io



Welcome to

Milton Drive, Leverington Wisbech

- No onward chain
- Two bedroom chalet (formerly three bedrooms)
- Large kitchen/diner (converted from third bedroom)
- Lounge with gas fireplace
- Conservatory overlooking large rear garden
- Two double bedrooms upstairs
- Substantial front garden with extensive parking
- Popular village location

Tenure: Freehold EPC Rating: D

Council Tax Band: C

£250,000



Please note the marker reflects the postcode not the actual property

view this property online williambrown.co.uk/Property/WSB128377



Property Ref:
WSB128377 - 0006

1. MONEY LAUNDERING REGULATIONS Intending purchasers will be asked to produce identification documentation at a later stage and we would ask for your co-operation in order that there is no delay in agreeing the sale. 2. These particulars do not constitute part or all of an offer or contract. 3. The measurements indicated are supplied for guidance only and as such must be considered incorrect. Potential buyers are advised to recheck measurements before committing to any expense. 4. We have not tested any apparatus, equipment, fixtures or services and it is in the buyers interest to check the working condition of any appliances. 5. Where an EPC, or a Home Report (Scotland only) is held for this property, it is available for inspection at the branch by appointment. If you require a printed version of a Home Report, you will need to pay a reasonable production charge reflecting printing and other costs. 6. We are not able to offer an opinion either written or verbal on the content of these reports and this must be obtained from your legal representative. 7. Whilst we take care in preparing these reports, a buyer should ensure that his/her legal representative confirms as soon as possible all matters relating to title including the extent and boundaries of the property and other important matters before exchange of contracts.

William H Brown is a trading name of Sequence (UK) Limited which is registered in England and Wales under company number 4268443, Registered Office is Cumbria House, 16-20 Hockliffe Street, Leighton Buzzard, Bedfordshire, LU7 1GN. VAT Registration Number is 500 2481 05.



william h brown



01945 464451



Wisbech@williambrown.co.uk



20 High Street, WISBECH, Cambridgeshire,
PE13 1DE



williambrown.co.uk