



# 37 Oak Tree Road

Milford Surrey GU8 5JJ

Guide Price: £725,000 Freehold





- Close to Village Centre, Popular Schools & Station
- Potential For Further Extension (STPP)
- Entrance Hall & Cloakroom
- Dual Aspect Sitting Room
- Study
- Fitted Kitchen/Dining Room & Utility Room
- Bathroom
- Gas Central Heating & Double Glazing
- Driveway
- Attractive 100ft Rear Garden



An attractive extended three bedroom detached family house, providing well planned accommodation, as well as offering great potential for further extension, subject to planning permission. The house currently comprises an entrance hall & cloakroom, delightful dual aspect sitting room, study, large kitchen/dining room and useful utility room. On the first floor there are three bedrooms and a bathroom. Outside there is a driveway providing ample off road parking and an attractive 100ft rear garden. The property is located at the end of small cul de sac only minutes from the village centre with its excellent local shops, facilities, popular schools, nearby bus routes, main line station and close to much common and heathland.







Main Line Station – 0.9 miles (Waterloo approx. 50/55 mins)

Village Centre – 0.2 miles Godalming – 2 miles

Infant School – 0200 meters Junior School – 1.5 miles

Secondary School – 0.6 miles

Doctors – 0.3 miles Dentist – 0.2 miles

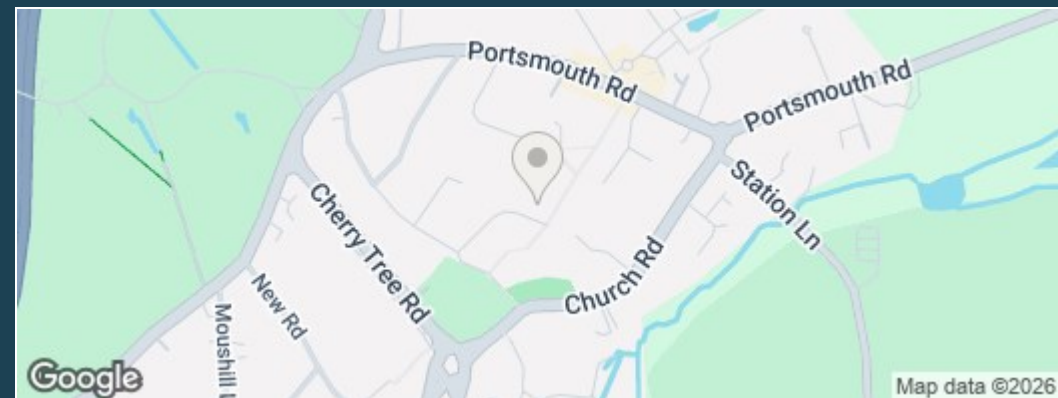
A3 – 1 mile M25 – 15 miles M3 – 14 miles

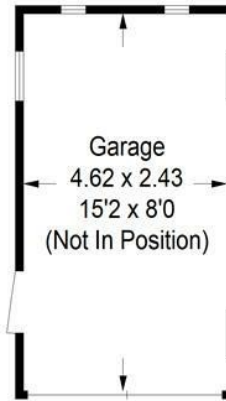
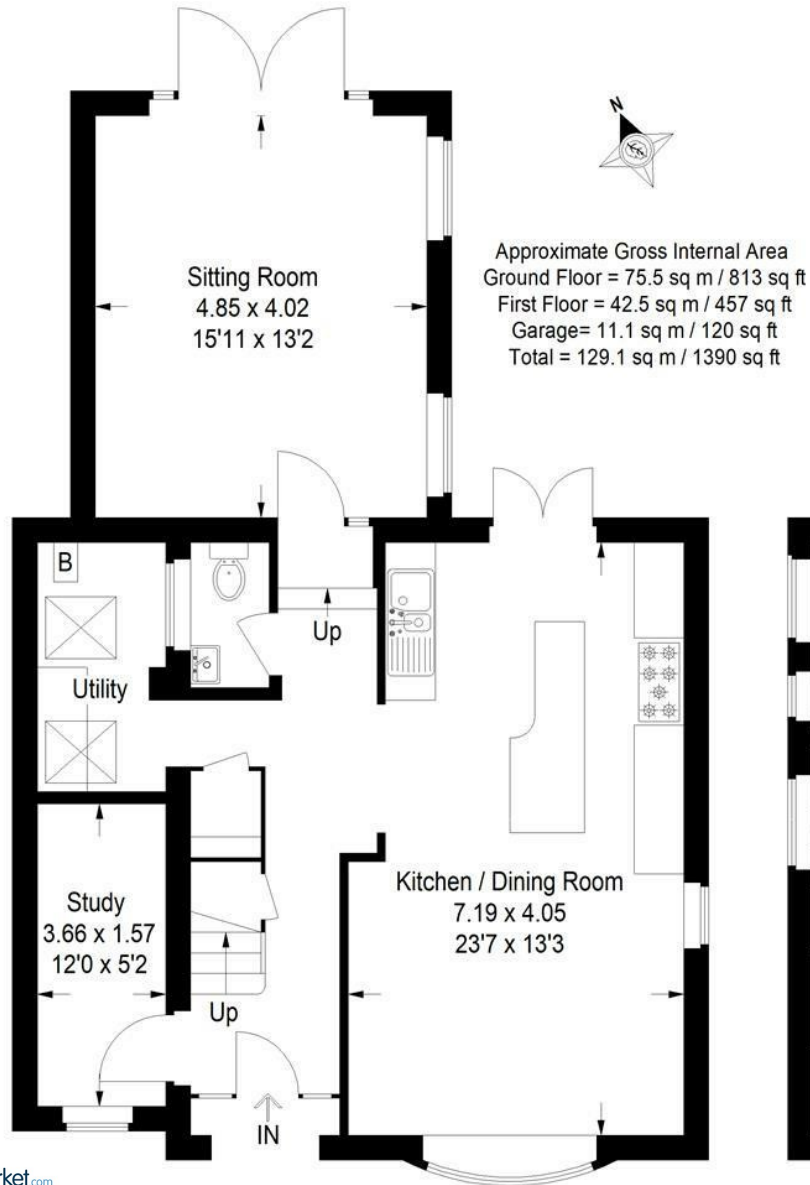
Council Tax Band – F Payable – £3579.15p (2025/26)

EPC Rating – D

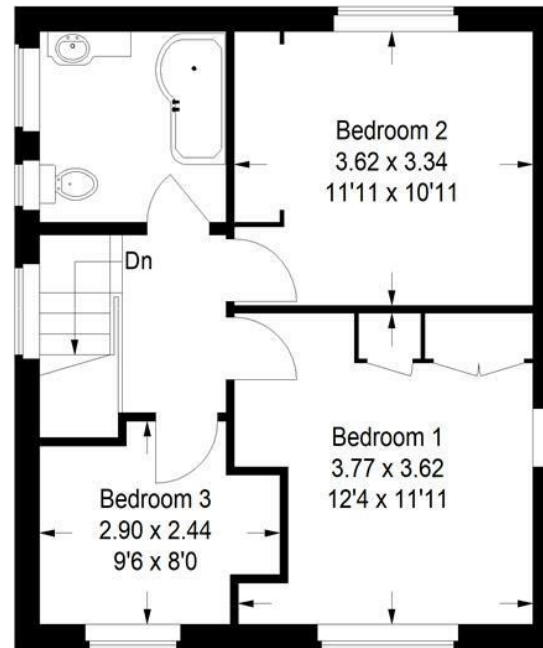


Directions: Leave Godalming in a southerly direction on the A3100 and on reaching Milford village take the second exit at the mini roundabout continuing along the Portsmouth Road. Then take the fourth turning on your left hand side into Upper Manor Road. Continue on to the end of Upper Manor Road and turn left into Oak Tree Road. Continue along Oak Tree Road passing the turning for The Manor and follow the road round and Number 37 will be found towards the end of the cul-de-sac on your left hand side.





This plan is for representation purposes only as defined by the RICS Code of Measuring Practice. Not drawn to scale unless stated. Please check all dimensions before making any decisions reliant upon them. No guarantee is given on square footage if quoted. Any figures if quoted should not be used as a basis for valuation.



**Ground Floor**

**First Floor**



**Emery & Orchard**  
 ESTATE AGENTS

01483 419 300

20 High Street  
 Godalming  
 Surrey  
 GU7 1EB

email: [office@emery-orchard.co.uk](mailto:office@emery-orchard.co.uk)



Note: These details are intended as a guide only and whilst believed to be correct are not guaranteed and they do not form part of any contract. We would inform prospective purchasers that we have not tested any equipment, appliances, fixtures, fittings or services. Any items not referred to in these particulars are excluded from the sale unless separately agreed. The distance to services & schools are approximate and given as a guide only. Prospective purchasers must check the admission policy for any school mentioned as these may vary. If the property has been extended since it was placed in its council tax band, the band may be reviewed and may increase following the sale of the property.