

**ROBERT  
HALE  
HOMES FOR  
SALE**

6, Wheel Centre, Broad St.,  
March, Cambs. PE15 8TX  
**MARCH**

**01354 652785**

E-mail:  
march@robert-hale-homes.co.uk

Website:  
www.robert-hale-homes.co.uk

**7 DAYS**

**WISBECH 465222**

**MARCH 652785**

**NAEA NETWORK**

**OVER 1000 OFFICES**



**7, BURNET GARDENS,  
MARCH,  
PE15 8PR.**

**THE PROPERTY**

BEAUTIFULLY PRESENTED, SPACIOUS, CONSIDERABLY EXTENDED FIVE DOUBLE BEDROOMED DETACHED HOUSE ON AN EXCLUSIVE HIGHLY SOUGHT AFTER RESIDENTIAL CUL-DE-SAC \* LOVELY PLOT WITH STUNNING VIEWS TO REAR OVER OPEN FIELDS \* 29FT FITTED KITCHEN/DINER WITH A WEALTH OF FITTED APPLIANCES \* SUPERB GARDEN ROOM \* TWO BATH /SHOWER ROOMS \* GARAGE PLUS EXTENSIVE MULTI-VEHICLE OFF ROAD PARKING SPACE \* ENCLOSED ORNAMENTAL GARDENS TO REAR \* GAS FIRED CENTRAL HEATING \* DOUBLE GLAZING \* MUST BE VIEWED TO BE APPRECIATED \* DON'T DELAY MAKE A VIEWING TODAY!

<b>PRICE</b>	<b>£425,000</b>	<b>FREEHOLD</b>	<b>EPC BAND A</b>
<b>COUNCIL TAX</b>	<b>BAND TBA</b>	<b>FENLAND DISTRICT COUNCIL</b>	<b>REF. NO. M4927</b>

**SELLING? FREE, FREE, VALUATIONS!**



For your own peace of mind, always have an independent survey,  
and always test all systems and appliances!  
Items displayed in photographs may not necessarily be included.



**REF. NO. M4927**

**7, BURNET GARDENS, MARCH**

**HOW TO GET THERE**

From our March office proceed along Station Road continue over the railway crossing and into Elm Road. Continue straight over the two mini-roundabouts and take the third turning right into Berryfield. Continue and take the second turning left into Burnet Gardens.

**THE ACCOMMODATION**

(Dimensions given are approximate only).

**ILLUMINATED ENTRANCE PORTICO**

**ENTRANCE HALL**

With tiled floor, stairway off.

**LOUNGE/DINER**

16'5"(max) x 12'(max) With Bay window.

**FITTED KITCHEN/DINER**

29'(max) x 12'2"(max) With tiled floor, built-in dishwasher, built-in fridge, built-in freezer, built-in microwave, plinth lighting, built-in electric double oven, built-in induction hob, peninsular preparation surface, electric hob hood, additional preparation surfaces with drawers and cupboards under, inset ceramic 1½ bowl sink unit with mixer tap and cupboards under, part tiled walls, granite work tops, double glazed French doors to Garden Room.

**GROUND FLOOR CLOAKROOM/W.C.** With part tiled walls, pedestal washbasin with mixer tap, low level w.c.

**UTILITY**

With range of wall cupboards, work top with space/plumbing under for automatic washing machine, space for condensing tumble drier, part tiled walls.

**GARDEN ROOM**

13'3"(max) x 11'5"(max) With tiled floor, double glazed French doors to rear garden.

**FIRST FLOOR**

**LANDING**

With access via foldaway ladder to part boarded loft with light point, built-in airing cupboard housing hot water cylinder with immersion heater.

**BATHROOM/W.C./SHOWER ROOM**

With tiled floor, tiled walls, low level w.c., circular hand washbasin with mixer tap and drawers under. Panelled bath with mixer tap and shower attachment, tiled and screened shower cubicle with thermostatic shower, shaver point, extractor fan.

**SHOWER ROOM/W.C.**

With tiled floor, tiled walls, low level w.c., pedestal washbasin, shaver point, tiled shower cubicle with thermostatic shower.

**BEDROOM NO. 1**

12'9"(max) x 11'4"(max) With full width range of fitted wardrobe/cupboards.

**BEDROOM NO. 2**

11'9"(max) x 10'5"(max) With laminate floor, full range of built-in wardrobe/cupboards.

**BEDROOM NO. 3**

12'1"(max) x 9'(max) 'L' shaped.

**BEDROOM NO.4**

10'7"(max) x 9'(max) With laminate floor.

**BEDROOM NO. 5**

9'6"(max) x 7'9"(max) With laminate floor.

**OUTSIDE**

SECTIONAL STORE  
OUTSIDE LIGHTS

EXTERNAL POWE POINTS  
SECURITY LIGHT

**GARAGE**

16'7"(max) x 8'10"(max) With electronically operated remote controlled roller door, power and lighting, hand washbasin, solar panel equipment, gas fired wall mounted central heating boiler.

**GARDENS**

Gardens to front down to an extensive ornamental block paved multi-vehicle off road parking area, with mature trees etc. Wrought iron gate to side opens onto a concrete pathway leading to the superb ornamental landscaped rear garden which enjoys stunning views over open fields to rear, and are down to astro turf, with decking area and paved patio.

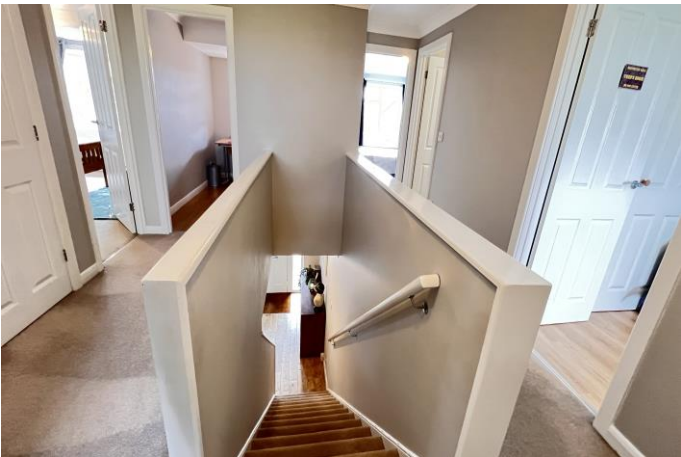
REF. NO. M4927

7, BURNET GARDENS, MARCH



REF. NO. M4927

7, BURNET GARDENS, MARCH



REF. NO. M4927

7, BURNET GARDENS, MARCH

