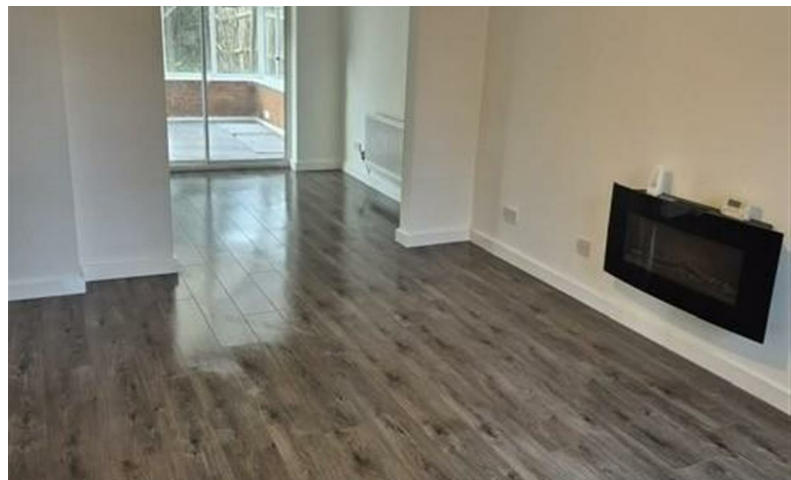




# RIDGEWAY

## RESIDENTIAL SERVICES



**£1,150 Per Calendar Month**

34 Rosewood Drive, Winsford, CW7 2UW

# 34 Rosewood Drive, Winsford, CW7 2UW

This delightful detached house offers a perfect blend of comfort and modern living. Spanning an impressive 1,001 square feet, the property boasts a well-thought-out layout that is ideal for families or those seeking extra space.

Upon entering, you are greeted by two inviting reception rooms, providing ample space for relaxation and entertaining guests. The natural light that floods these areas creates a warm and welcoming atmosphere, making it a perfect setting for family gatherings or quiet evenings in.

The house features three generously sized bedrooms, each designed to offer a peaceful retreat at the end of the day. With two well-appointed bathrooms, morning routines and family life are made effortless, ensuring convenience for all.

Built in 1999, this property combines contemporary design with the charm of a well-established neighbourhood. The surrounding area of Winsford is known for its friendly community and local amenities, making it an ideal location for families and professionals alike.

## Credit References and Deposit

Prospective tenants will be required to complete a credit referencing application payable whether successful or not. Prior to taking occupation of the property you will be required to pay a deposit of 1½ times the monthly rent, the first months rent in advance and an administration fee.

## Directions

