



Price
£450,000

Freehold

2x  1x  1x 

**Alma Avenue,
Hornchurch, Essex,
RM12**

OVER 60?

Secure this property
for up to **59% less!**

 **DOUGLAS
ALLEN**
Helping you move forwards



Main features

- **Extended bungalow in a great location**
- **Close to Hornchurch & Upminster Bridge Stations**
- **Detached Garage and workshop to the rear**
- **Some modernisation required**
- **Versatile accommodation to update and improve further**

Accommodation

GROUND FLOOR

- Hallway
- Bathroom
- Bedroom 1: 13'4 x 10'5 (4.07m x 3.18m)
- Bedroom 2: 12'5 x 10'2 (3.79m x 3.10m)
- Walk In-Wardrobe
- Kitchen: 11'10 x 6'10 (3.61m x 2.08m)
- Utility Area: 10'9 x 6'8 (3.28m x 2.03m)
- Lounge/Dining Room: 21'4 x 13'4 (6.51m x 4.07m)

OUTBUILDING

- Workshop: 17'0 x 14'10 (5.19m x 4.52m)
- Garage: 17'0 x 12'1 (5.185m x 3.69m)

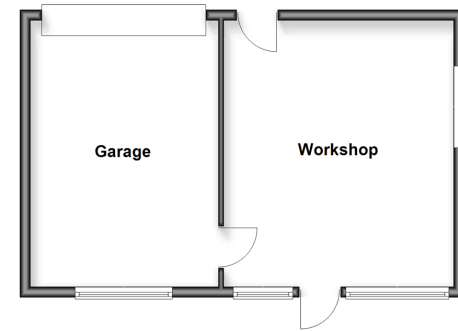
OUTSIDE

- Off Road Parking
- Rear Garden

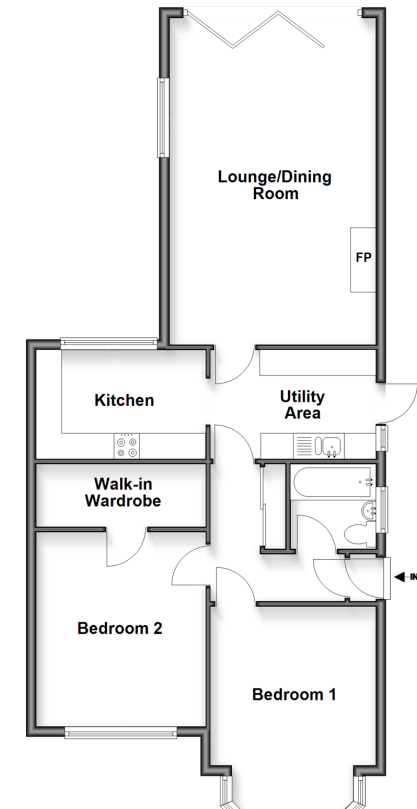
Call Hornchurch - 01708 437777 ■ douglasallen.co.uk

- A private rental licensing scheme applies to some properties in this area, please check with the Local Authority before proceeding
- Through a Homewise Home For Life Plan people aged 60+ can secure this property for up to 59% less, by purchasing a Lifetime Lease

Outbuilding
Approx. 43.1 sq. metres (464.2 sq. feet)



Ground Floor
Approx. 79.8 sq. metres (859.3 sq. feet)



51916475/20260328/CC1/DT