



64 Buckingham Road  
Liverpool , L31 7DP  
Asking Price £325,000

**BerkeleyShaw**  
REAL ESTATE

BerkeleyShaw  
REAL ESTATE

BerkeleyShaw  
REAL ESTATE

BerkeleyShaw  
REAL ESTATE

**Porch**

**Hallway**

**Kitchen**

17'9 by 7'11 (5.41m by 2.41m)

**Living Room**

13'7 by 11'11 (4.14m by 3.63m)

**Dining Room**

17'9 by 10'3 (5.41m by 3.12m)

**WC**

3'6 by 2'7 (1.07m by 0.79m)

**Master Bedroom**

12'8 by 11'3 (3.86m by 3.43m)

**Double Bedroom**

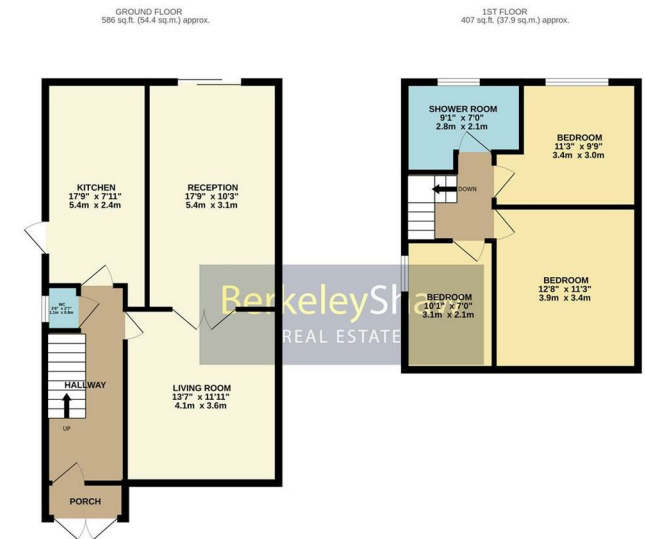
11'3 by 9'9 (3.43m by 2.97m)

**Single Bedroom**

10'1 by 7'0 (3.07m by 2.13m)

**Shower Room**

9'1 by 7'0 (2.77m by 2.13m)



TOTAL FLOOR AREA - 993 sq ft (92.3 sq m) approx.  
 While every attempt has been made to ensure the accuracy of the floorplan contained here, measurements of floors, ceilings, rooms and any other areas are approximate and no responsibility is taken for any error or omission on this statement. The plan is for guidance purposes only and should be used as such for any prospective purchase. The format, layout and appearance shown here are not to be used as a guarantee and to vary according to efficiency class. The plan is made with Metropac 0202.

