

4 Daniels Close - Guide Price £220,000

Acton Sudbury CO10 0XA

shires

Estate & Letting Agents



"Consistently providing outstanding service to our clients"

Guide Price £220,000

The Property

Nestled in the charming area of Daniels Close, Acton, Sudbury, this delightful terraced house offers a perfect blend of modern living and comfort. Spanning an impressive 818 square feet, the property boasts three well-proportioned bedrooms, making it an ideal home for families or those seeking extra space.

Upon entering, you will be greeted by a welcoming reception room that provides a warm and inviting atmosphere. The recently fitted modern kitchen is a standout feature, designed to cater to all your culinary needs while offering a stylish space to entertain guests. The contemporary new bathroom adds a touch of luxury, ensuring that your daily routines are both comfortable and enjoyable.

The house has been thoughtfully updated with new doors and windows throughout, enhancing both its aesthetic appeal and energy efficiency. Outside, the private low-maintenance rear garden presents a tranquil retreat, perfect for relaxing or hosting summer gatherings without the burden of extensive upkeep.

Built in 1978, this property combines the charm of its era with the conveniences of modern living. With its prime location and well-appointed features, this terraced house is a wonderful opportunity for anyone looking to settle in a vibrant community. Don't miss the chance to make this lovely home your own.

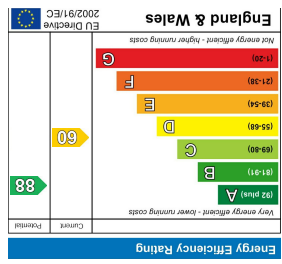
Features

- Three Bedrooms
- Spacious Living Room
- Recently Fitted Modern Kitchen
- Contemporary New Bathroom
- New Doors And Windows Throughout
- Private Low-Maintenance Rear Garden
- Off-Road Parking And Garage
- Peaceful Cul-De-Sac Location
- Sought After Village Location
- Call To View



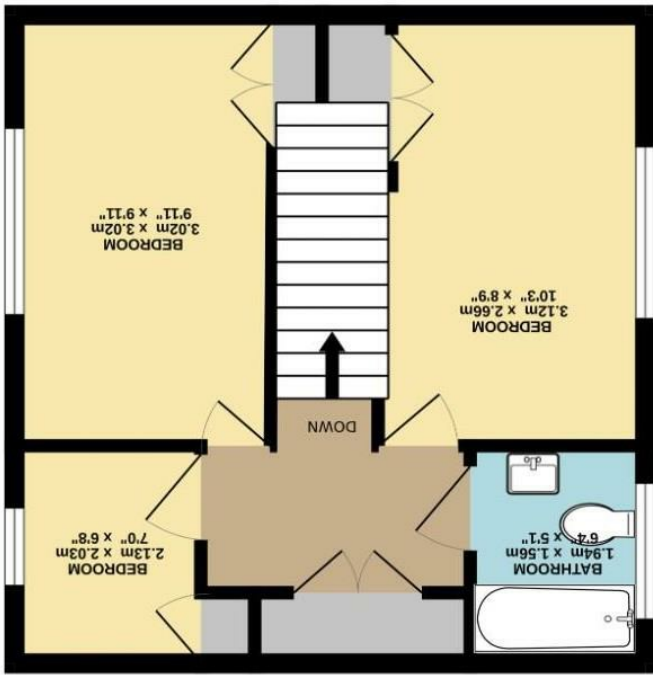
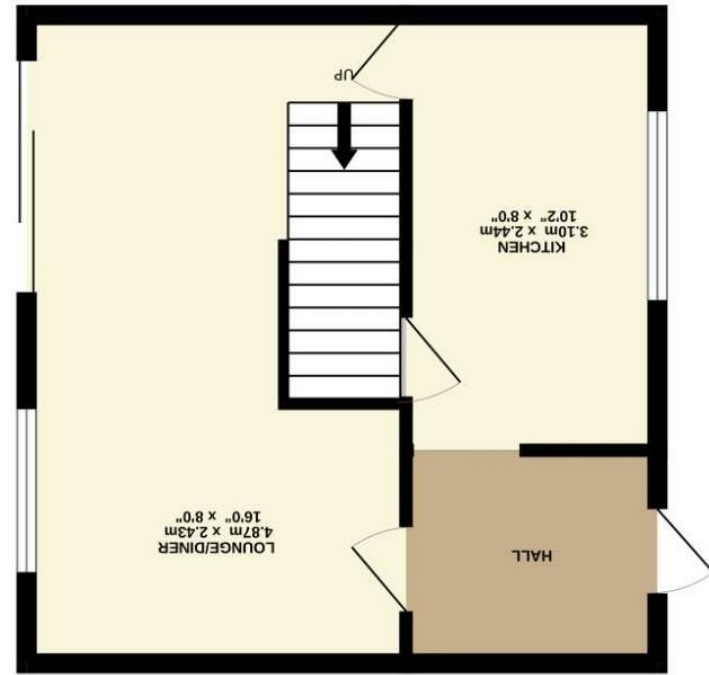


These sales particulars have been produced as a general guide only and we would draw to your attention that we have not carried out a detailed Survey of the property nor have we tested services, appliances or specific fittings. Whilst measurements and statements given within the details are provided in good faith, their accuracy should not be relied upon. If there are any points about which you may be uncertain or would like further clarification, we would suggest that you telephone this office and speak to our staff who will endeavour to assist you.



Whilst every attempt has been made to ensure the accuracy of the floorplan contained here, measurements of doors, windows, rooms and any other items are approximate and no responsibility is taken for any error, omission or mis-statement. This plan is for illustrative purposes only and should be used as such by any prospective purchaser. The services, systems and appliances shown have not been tested and no guarantee as to their operability or efficiency can be given.

Made with Metropix ©2025



17 High Street, Halstead, Essex, CO9 2AA
 T: 01787 479988
 E: halstead@shiresstateagents.co.uk