



1 North View, Mountain, Queensbury, Bradford, BD13 1LL

£425,000

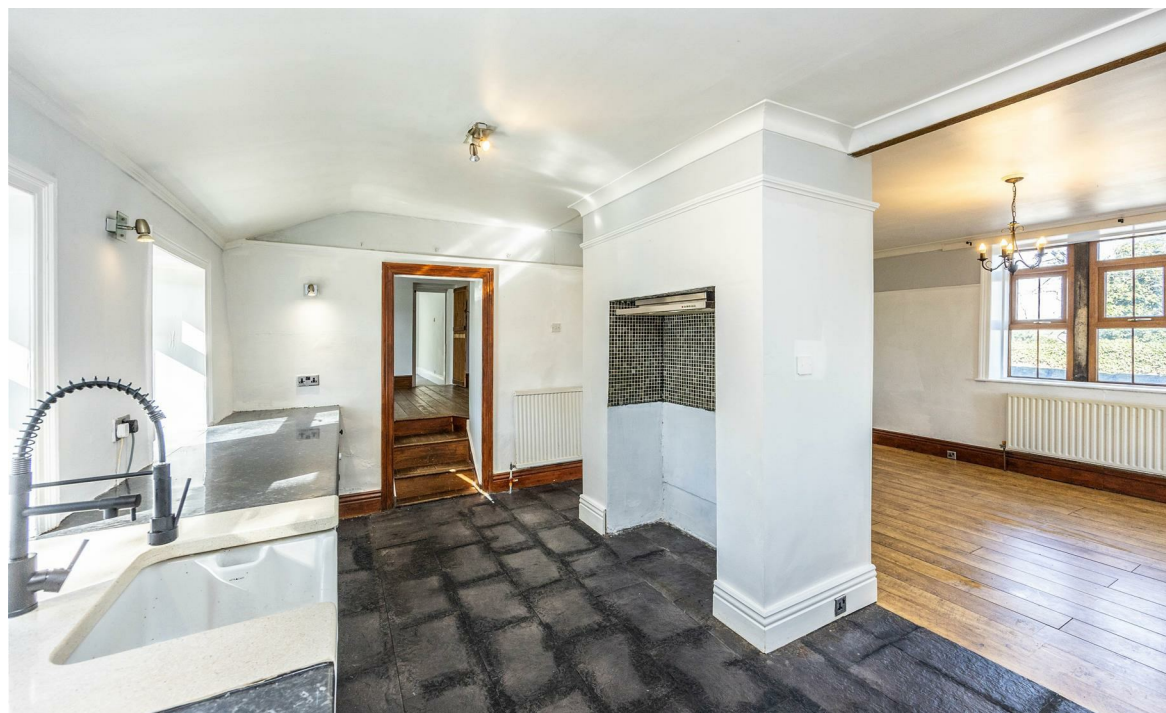
- Unique 5-bedroom detached bungalow
- Double garage with electric doors
- South-west facing wrap-around garden
- Annex conversion potential
- Large driveway for multiple vehicles
- Versatile living spaces throughout

1 North View, Bradford BD13 1LL

A spacious five-bedroom bungalow in Mountain, Queensbury, offering versatile living across multiple reception rooms and a conservatory. The home features a modern kitchen diner, generous bedrooms including a master with en suite, and a well-appointed house bathroom. Characterful features include three fireplaces and original wood-panelled flooring. Outside, the property boasts a south-west facing wrap-around garden, double garage, large driveway for six vehicles, and annex potential. Ideally located near local schools, shops, and excellent transport links, perfect for family living.



Council Tax Band: F



Entrance & Utility:

Upon entry, you are welcomed by a large laundry/boot room, ideal for washer, dryer, and storage.

Kitchen/Diner:

The kitchen diner provides generous living space with a corner worktop unit, integrated fridge freezer, dishwasher, and wash basin. Overlooking the rear garden, it benefits from a bright and airy outlook across the south-west facing wrap-around garden.

Lounge & Conservatory:

The lounge offers a large living space with original features including wood-panelled flooring, exposed beams, and a central fireplace. Leading into the conservatory, the space is flooded with natural light, creating a warm and inviting atmosphere.

Second Reception:

The property features a second reception room adjacent to the fireplace, perfect as a playroom, games room, or secondary lounge.

Bedrooms & Bathrooms:

The first bedroom has access to a downstairs toilet, suitable for a double bed and storage.

The second and third bedrooms provide generous space, overlooking the front and rear respectively.

The fourth bedroom, the master, is the largest and includes built-in storage and an en suite with shower, wash basin, and WC.

The fifth bedroom is upstairs, multi-purpose, and features a long storage cupboard ideal for a walk-in wardrobe.

The house bathroom is spacious and well-appointed, with a free-standing bath, walk-in shower, wash basin, WC, and built-in storage housing the 3-month-old boiler.

Fireplaces

The bungalow features three fully functional fireplaces throughout, adding character and charm.

Outside

The south-west facing wrap-around garden offers a mix of patio, decking, and lawn—perfect for outdoor entertaining or family activities. The property benefits from a large driveway accommodating up to six vehicles and a double garage with electric roll-up doors. Across from the garage, an old stable provides annex conversion potential, and the house roof was reroofed 5 years ago and fully insulated to improve energy performance. (EPC was carried out prior to this work)

Location

Situated in Mountain, Queensbury, this property provides an ideal family-friendly location, with local schools, shops, and excellent transport links all within easy reach, making it ideal for everyday living and commuting.

Agent Notes & Disclaimer.

The information provided on this property does not constitute or form part of an offer or contract, nor may it be regarded as representation. All interested parties must verify accuracy and your solicitor must verify tenure/lease information, fixtures & fittings and, where the property has been extended/converted, planning/building regulation consents. All dimensions are approximate and quoted for guidance only as are floor plans which are not to scale, and their accuracy cannot be confirmed. Reference to appliances and/or services does not imply that they are necessarily in working order or fit for the purpose.





