



## Flat 6, Howard One Howard Street, Nottingham, NG1 3LT

£520 Per week

- Available Academic Year 2026/2027 £130 pppw Exclusive of bills
- £155 pppw inclusive of utilities and internet based on 4 sharing (Subject to fair usage)
- 4 Double Ensuite Rooms
- Open Plan Kitchen/Lounge
- Integrated Appliances
- Intercom Entry & Fob access
- Onsite Chargeable Laundry Facilities
- City Centre Location, Walking Distance To NTU and Parking on request
- No Deposit Option Available
- Parking Negotiable On Request

# Howard One Howard Street, Nottingham NG1 3LT

\*\*CITY CENTRE APARTMENT AVAILABLE AUGUST 2026\* \*NO DEPOSIT OPTION AVAILABLE\*

\*PARKING NEGOTIABLE ON REQUEST\*

£130 pppw Exclusive of Bills

£155 pppw inclusive of utilities and internet

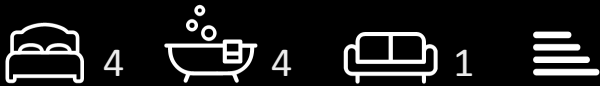
Located less than a 10 minute walk to NTU City Campus and with easy access to transport links to Clifton campus, Brackenhurst campus and Uni of Nottingham Jubilee campus this property is in the ideal location for all Nottingham students.

The building benefits from a lift, fob entry and CCTV.

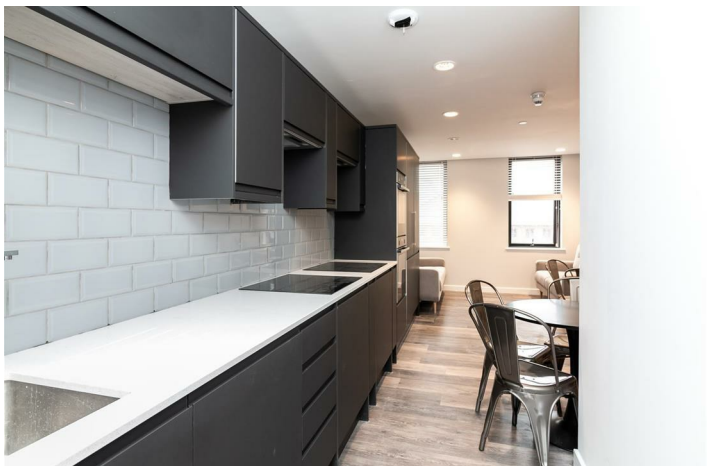
At the heart of the apartment is an open plan kitchen living area with integrated appliances including fridge freezers, dishwasher and oven. The building has pay per use industrial laundry facilities for you to use.

Within the lounge area there are sofas creating a social space to sit down and relax.

Each of the double bedrooms is provided with a 4ft double bed, wardrobe, desk and chair. There is also an ensuite shower room to each bedroom benefiting from a modern fitted shower, WC, sink and mirror.



Council Tax Band: C







## Directions

## Viewings

Viewings by arrangement only. Call 01157042554 to make an appointment.

## EPC Rating:

Energy Efficiency Rating		Current	Potential
Very energy efficient - lower running costs			
(92 plus) <b>A</b>			
(81-91) <b>B</b>			
(69-80) <b>C</b>			
(55-68) <b>D</b>			
(39-54) <b>E</b>			
(21-38) <b>F</b>			
(1-20) <b>G</b>			
Not energy efficient - higher running costs			
<b>England &amp; Wales</b>		EU Directive 2002/91/EC 	