

Woburn Place, WC1H

£450 Per week

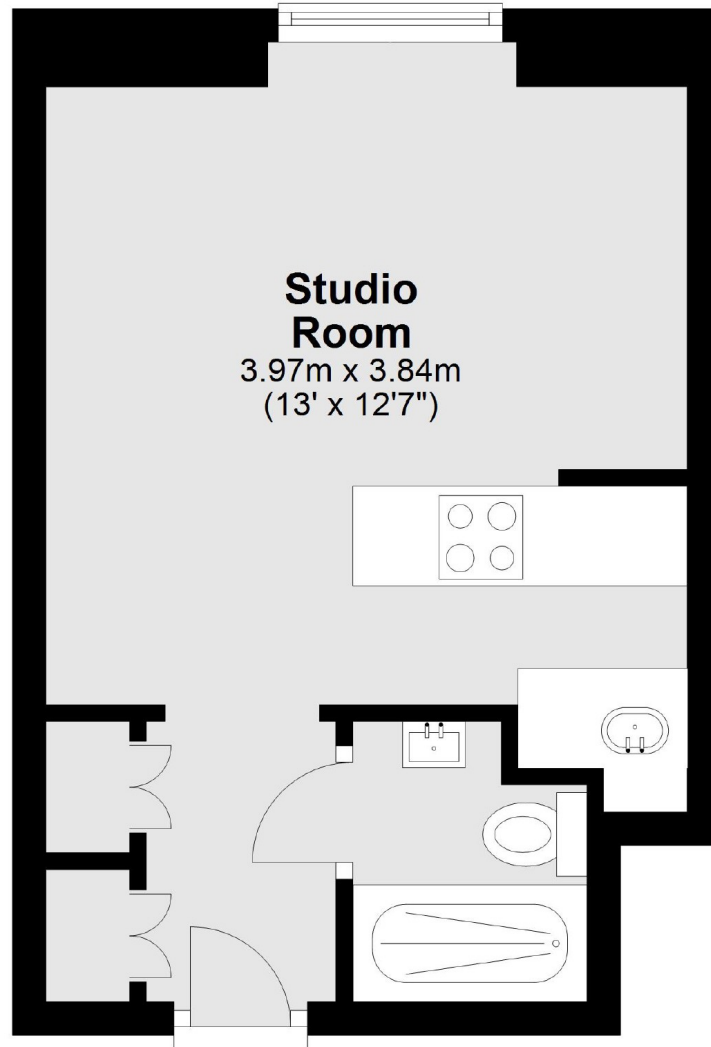
Eighth floor studio flat with bright views over London and the Shard. It has a semi-open plan kitchen studio room with dishwasher, washing machine, fridge freezer, oven and hob all provided.

Russell Court is a purpose built mansion building moments from Russell Square. It has a 24 hour porter service and three lifts to all floors. It is well located for Russell Square tube, UCL, SOAS and Kings Cross.

Features

- Hot water & heating included
- Great Views
- 24 hour concierge
- Dishwasher, oven & hob
- Washing machine
- Modern fully tiled bathroom

Woburn Place, London, WC1H



Total area: approx. 21.3 sq. metres (228.9 sq. feet)