



HEMMINGS HOMES

OFFERS OVER

£150,000

Helmsdale Court

Glasgow, G72 7YR

PROPERTY SUMMARY

Welcome to this charming terraced house located in the desirable area of Helmsdale Court, Cambuslang, Glasgow. This delightful property, built in 1972, offers a comfortable living space of 1,033 square feet, making it an ideal home for families or those seeking a bit more room to breathe.

As you enter, you are greeted by a spacious reception room that provides a warm and inviting atmosphere, perfect for both relaxation and entertaining guests. The house boasts three well-proportioned bedrooms, each offering ample space for personalisation and comfort. The single bathroom is conveniently located, catering to the needs of the household.

The property is situated in a friendly neighbourhood, known for its community spirit and accessibility to local amenities. Cambuslang offers a variety of shops, schools, and parks, ensuring that all your daily needs are within easy reach. Additionally, excellent transport links make commuting to Glasgow city centre a breeze.

This terraced house presents a wonderful opportunity for those looking to settle in a vibrant area with a rich history. With its practical layout and potential for modernisation, it is a canvas ready for your personal touch. Whether you are a first-time buyer or seeking a family home, this property is certainly worth considering. Do not miss the chance to make this lovely house your new home.

3



1



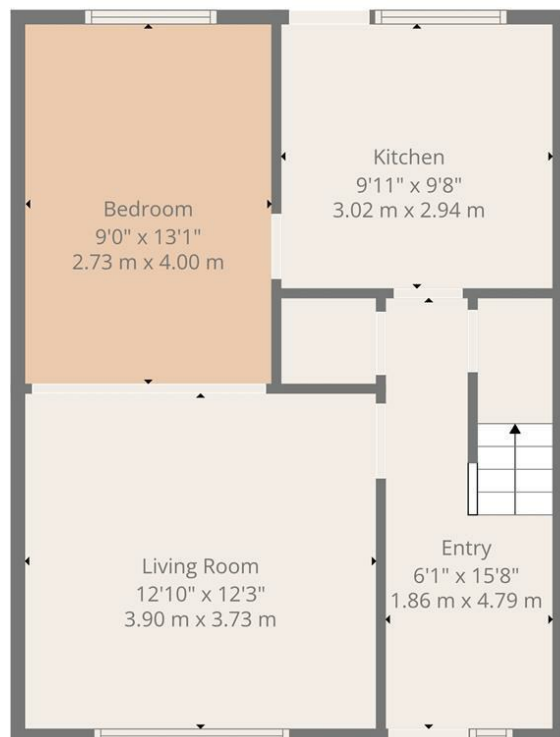
1



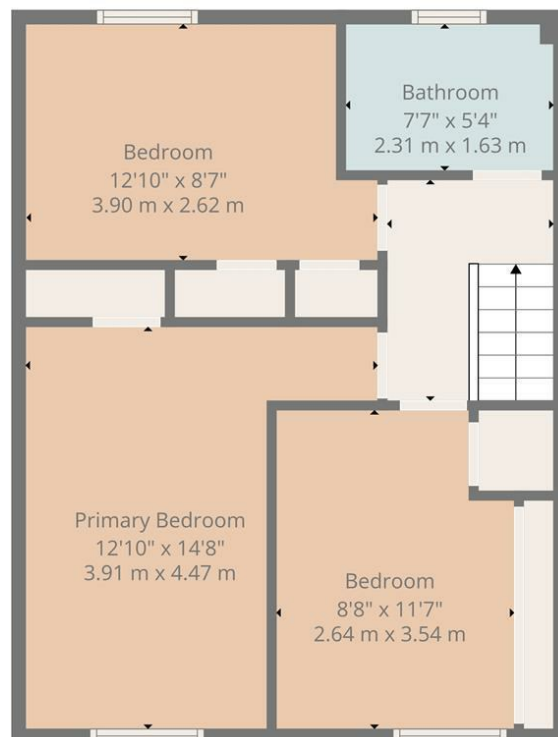








Ground Floor



1st Floor

LOCAL AUTHORITY

South Lanarkshire

TENURE

Freehold

COUNCIL TAX BAND

C

VIEWINGS

By prior appointment only

Energy Efficiency Rating		
	Current	Potential
Very energy efficient - lower running costs		
(92 plus) A		
(81-91) B		
(69-80) C	76	81
(55-68) D		
(39-54) E		
(21-38) F		
(1-20) G		
Not energy efficient - higher running costs		
Scotland	EU Directive 2002/91/EC	

TOTAL: 988 sq. ft, 92 m2
 Ground floor: 494 sq. ft, 46 m2, 1st floor: 494 sq. ft, 46 m2
 EXCLUDED AREAS: WALLS: 92 sq. ft, 8 m2

Floor Plan Created By Cubicasa App. Measurements Deemed Highly Reliable But Not Guaranteed.

Agents Note: Whilst every care has been taken to prepare these particulars, they are for guidance purposes only. All measurements are approximate and are for general guidance purposes only and whilst every care has been taken to ensure their accuracy, they should not be relied upon and potential buyers/tenants are advised to recheck the measurements



OFFICE ADDRESS

376 Brandon Street
 Motherwell
 North Lanarkshire
 ML1 1XA

OFFICE DETAILS

01698 263413
enquiries@hemmingshomes.co.uk
hemmingshomes.co.uk