

## Province Square, E14

£295,000

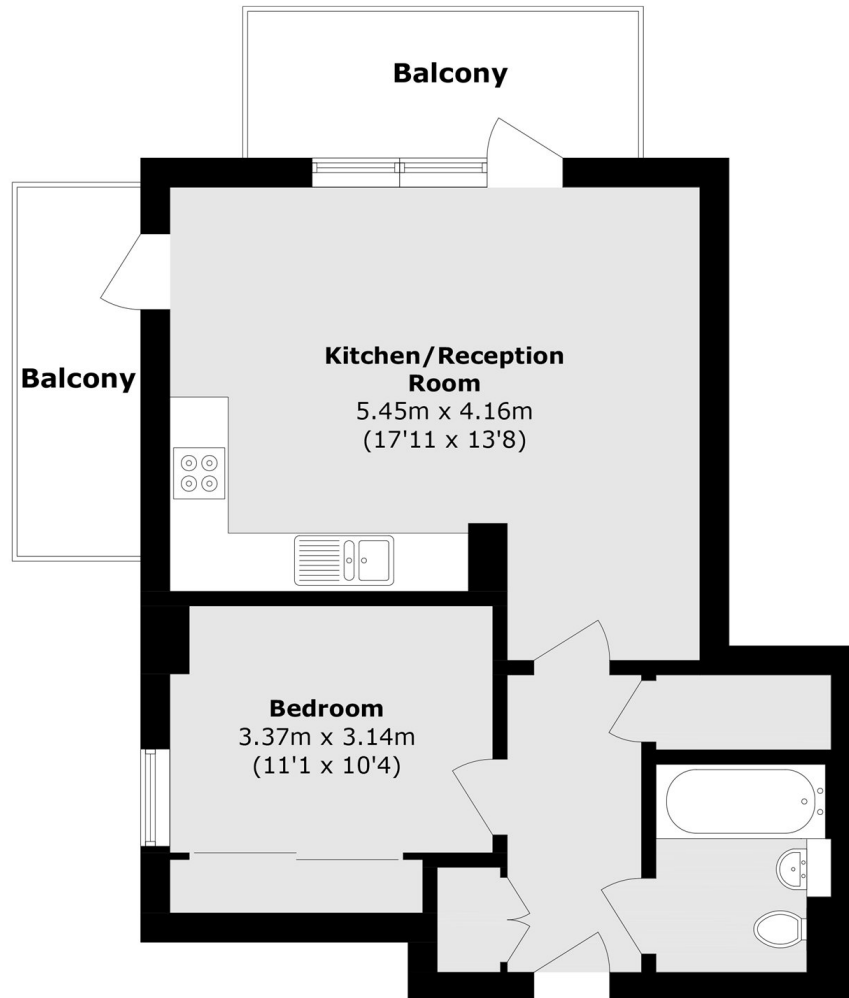
We are pleased to present this one-bedroom apartment in a highly sought-after development. Equipped with integrated appliances and a modern specification throughout, the property also benefits from an abundance of natural light, with two separate balconies accessible from the open-plan reception room and kitchen. The property further benefits from a long lease.

Streamlight Tower is 0.6 miles away from Canary Wharf station, offering multiple transport routes with easy access into The City. Blackwall DLR is also a 6 minute walk away (0.2 miles). Poplar High Street is a short walk away, offering a range of amenities such as bars, cafes, restaurants and much more

### Features

- Two Balconies
- Sought After Development
- Long Lease
- Natural Light
- Integrated Appliances
- Open Plan Living

# Province Square, London, E14



Total area (approx.): 46.4 sq. m (499.4 sq. ft)  
Balcony total (approx.): 10.8 sq. m (116.2 sq. ft)