



Webbs

Helping people move since 1994

Sherringham Drive | Wolverhampton | WV11 2EB

Offers Over £380,000



Summary

****FOUR BEDROOM DETACHED HOME**HEAVILY EXTENDED TO THE REAR**2X GARAGE**CUL-DE-SAC LOCATION**TWO RECEPTION ROOMS**L SHAPED KITCHEN DINER**SEPARATE UTILITY ROOM**PERFECT FAMILY ROOM**VIEWING ESSENTIAL****

Nestled in the prestigious Sherringham Drive, Essington, Wolverhampton, this remarkable four-bedroom detached house is a true gem. Heavily extended, it boasts a spacious and inviting layout, making it an ideal family home. The property features a charming lawned frontage and a driveway that accommodates multiple vehicles, complemented by two garages conveniently located to the side.

Upon entering, you are greeted by a welcoming entrance hall that leads to a guest WC. The ground floor comprises two generous reception rooms, including a comfortable lounge with double doors that open into an extended sitting and dining room, perfect for entertaining or family gatherings. Adjacent to this is the impressive L-shaped kitchen-dining room, which is further enhanced by a separate utility room and direct access to both garages.

Venturing to the first floor, you will find four well-proportioned bedrooms, providing ample space for family living. The family bathroom serves the additional bedrooms, while the master bedroom benefits from its own en-suite shower room, ensuring privacy and convenience.

Key Features

- EXTENDED FOUR BEDROOM DETACHED HOME
- EXTENDED KITCHEN DINING ROOM
- FOUR GENEROUS BEDROOMS
- LANDSCAPED GARDEN
- DRIVE WAY AND 2X GARAGES
- TWO RECEPTION ROOMS
- SEPARATE UTILITY ROOM
- MASTER OFFERING SHOWER ROOM
- PROPERTY CAN BE EASILY EXTENDED
- CALL WEBBS TO SECURE YOUR VIEWING ON 01922 663399!!

Rooms and Dimensions

Entrance Hall

Guest WC

5'4" x 2'9" (1.633m x 0.845m)

Lounge

17'8" x 11'5" (5.397m x 3.502m)

Sitting Dining Room

18'3" x 9'8" (5.575m x 2.969m)

Dining Area

11'9" x 8'5" (3.595m x 2.573m)

Extended Kitchen

16'11" x 7'10" (5.159m x 2.388m)

Utility Room

7'2" x 7'1" (2.194m x 2.160m)

First Floor Landing

Bedroom One

12'9" x 11'7" (3.900m x 3.531m)

Shower Room

3'10" x 3'9" (1.177m x 1.167m)

Bedroom Two

10'4" x 12'5" (3.160m x 3.799m)

Bedroom Three

7'2" x 7'4" (2.205m x 2.242m)

Bedroom Four

7'9" x 7'8" (2.366m x 2.352m)

Family Bathroom

8'7" x 5'3" (2.626m x 1.601m)

Double Garage

18'8" x 16'8" (5.709m x 5.082m)

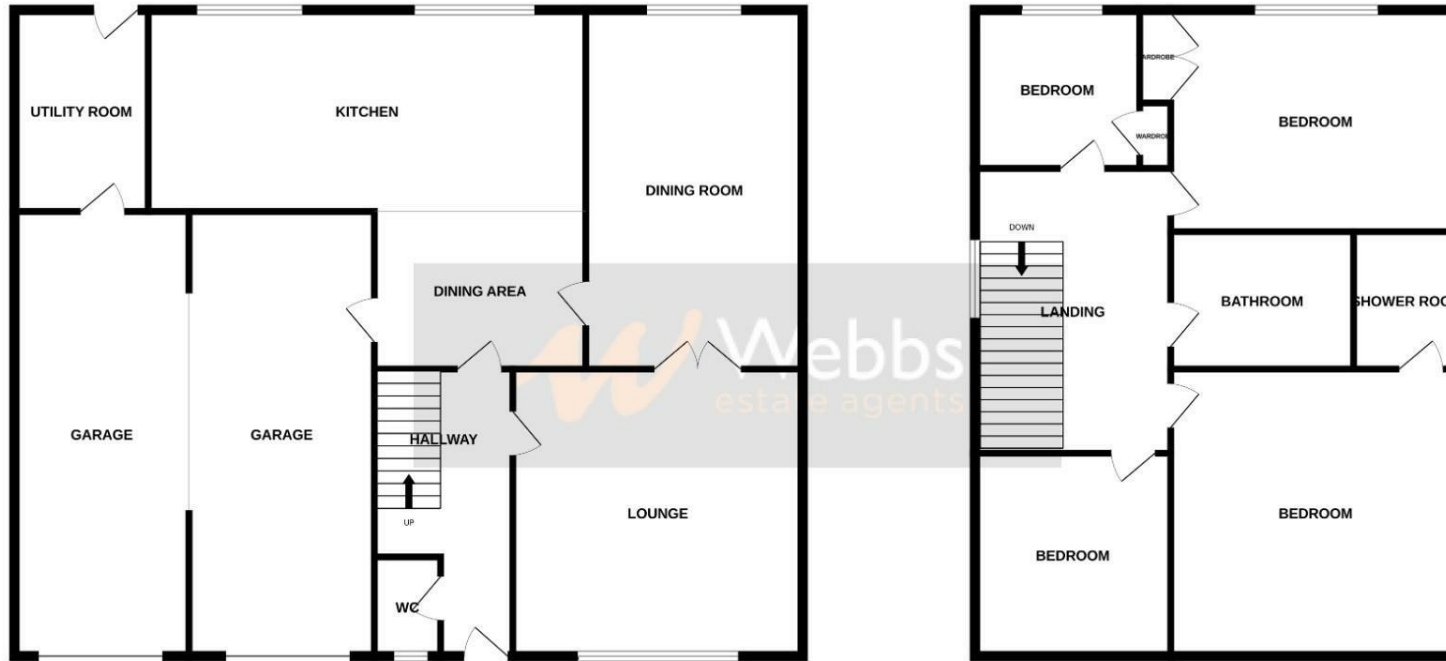
Identification Checks B





GROUND FLOOR

1ST FLOOR



Whilst every attempt has been made to ensure the accuracy of the floorplan contained here, measurements of doors, windows, rooms and any other items are approximate and no responsibility is taken for any error, omission or mis-statement. This plan is for illustrative purposes only and should be used as such by any prospective purchaser. The services, systems and appliances shown have not been tested and no guarantee as to their operability or efficiency can be given.
 Made with Metropix ©2025

Webbs Estate Agents - endeavour to maintain accurate depictions of properties in Virtual Tours, Floor Plans and descriptions, however, these are intended only as a guide and purchasers must satisfy themselves by personal inspection.

Energy Efficiency Rating		Environmental Impact (CO ₂) Rating	
Current	Potential	Current	Potential
100-125 kWh/m ² /year A	100-125 kWh/m ² /year A	100-125 g/m ² /year A	100-125 g/m ² /year A
125-150 kWh/m ² /year B	125-150 kWh/m ² /year B	125-150 g/m ² /year B	125-150 g/m ² /year B
150-175 kWh/m ² /year C	150-175 kWh/m ² /year C	150-175 g/m ² /year C	150-175 g/m ² /year C
175-200 kWh/m ² /year D	175-200 kWh/m ² /year D	175-200 g/m ² /year D	175-200 g/m ² /year D
200-225 kWh/m ² /year E	200-225 kWh/m ² /year E	200-225 g/m ² /year E	200-225 g/m ² /year E
225-250 kWh/m ² /year F	225-250 kWh/m ² /year F	225-250 g/m ² /year F	225-250 g/m ² /year F
250-300 kWh/m ² /year G	250-300 kWh/m ² /year G	250-300 g/m ² /year G	250-300 g/m ² /year G

England & Wales EU Directive 2002/91/EC