

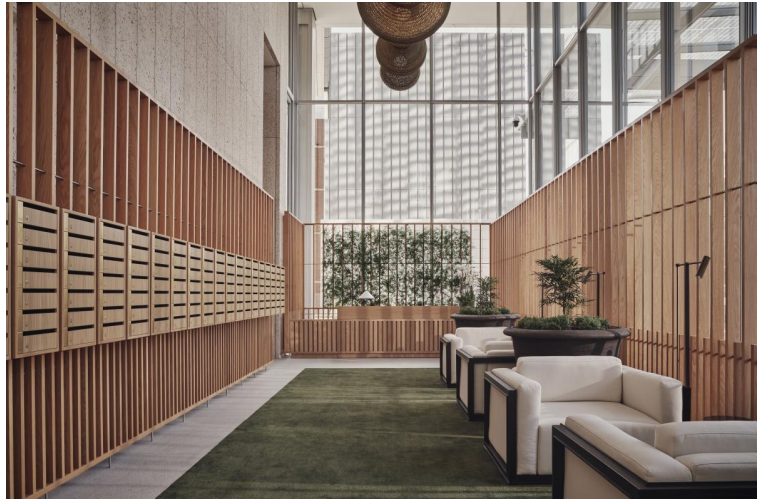


London Bridge Street, London SE1

Price £1,650 per week - Furnished







Description

This two-bedroom penthouse in Shard Place redefines rental living in London Bridge. The building prioritises wellness and natural light, combining world-class amenities with a thoughtfully appointed home.

The apartment features light-filled interiors with large-format ceramic flooring flowing into the private winter garden. Southwest-facing aspects provide natural light throughout the day, whilst the Bermondsey Light interior collection creates an airy atmosphere. Handmade bespoke oak furniture by British and European artisans adds warmth to the two bedrooms, served by both an ensuite and family bathroom. The apartment comes furnished with pieces by State of Craft alongside selections from Cassina, B&B Italia, and Fredericia. Curated artworks by established artists complete the interiors.

Residential amenities at Shard Place focus on wellbeing. The heated 18-metre rooftop swimming pool sits 27 storeys above the city. The wellness suite includes a steam room, sauna, and treatment room, whilst the gym features Technogym equipment with resident training events. The double-height orangery with south-facing terrace offers complimentary tea and coffee, whilst the 15-seat cinema provides Dolby Atmos surround sound and 4K projection. Private lounge and dining facilities are available for entertaining.

London Bridge offers a dynamic mix of history and innovation. The Shard, King's College London's Guy's Campus, and Borough Market sit within minutes on foot. Bermondsey Street's independent boutiques and galleries are seven minutes away, whilst South Bank cultural attractions including Tate Modern and Shakespeare's Globe are easily reached. The neighbourhood balances heritage sites like Southwark Cathedral with contemporary architecture.

Transport connectivity is exceptional. London Bridge Station provides Northern and Jubilee line services across London. The West End is 16 minutes away, Canary Wharf 7 minutes via Jubilee line, whilst Thameslink services connect to Gatwick Airport in 28 minutes. Dan Pearson Studios landscaping surrounds the building with public spaces, shops, bars, restaurants and cafes.

The 24-hour concierge, onsite maintenance team, and Residence Manager ensure seamless living, whilst the residents' portal manages daily requirements. Secure bicycle storage, car club membership, and parcel lockers add convenience. With WiredScore Platinum rating guaranteeing industry-leading broadband, this residence combines design with the flexibility of modern London living.

Council tax band: G. Rent is payable on a monthly basis, and you may be required to pay more than a month's rent in advance for tenancies with annual rents exceeding £100,000. You will be required to pay a 1 week holding deposit following a successful offer. Tenancies with annual rents up to £50,000 will require a 5 weeks' security deposit, while those exceeding this threshold will require a 6 weeks' deposit. Utility bills, council tax, telephone line and broadband are not included in the rent. As well as paying the rent, you may also be required to make some additional permitted payments. If your tenancy does not qualify as an APT, additional fees may apply. Please visit jll.co.uk/fees for details of fees that may be payable when renting a property. To check broadband and mobile phone coverage please visit Ofcom here ofcom.org.uk/phones-telecoms-and-int

- Penthouse apartment at Shard Place
- London's highest heated rooftop pool
- Private wellness suite with gym
- Double-height orangery and terrace
- 15-seat cinema with surround sound
- Furnished by State of Craft
- 24-hour concierge service
- Secure bicycle storage included
- Adjacent to London Bridge Station

Floorplan

1,126 sq ft | 105 sq m

City
25 Walbrook The Walbrook
Building,
London EC4N 8AF
+4420 7337 4000

Urban living, your way.

jll.co.uk/residential

© 2019 Jones Lang LaSalle IP, Inc. All rights reserved. All information contained herein is from sources deemed reliable; however, no representation or warranty is made to the accuracy thereof.

