

Uckfield 01825 703000  
Crowborough 01892 489000  
Heathfield 01435 511800

Peter Oliver



Russet Grove, Heathfield, TN21 0FL

- ▼ 4 Bedroom Home
- ▼ En-suite & Cloakroom
- ▼ Beautiful Kitchen/Diner
- ▼ West Facing Garden
- ▼ Allocated & Visitor Parking
- ▼ Well Presented Throughout



**EPC RATING**

Current:

85 | B

Potential:

94 | A

**£450k - £475k**



## Russet Grove, Heathfield, TN21 0FL

Set in the sought-after village of Horam, this beautifully presented four-bedroom end of terrace home offers spacious and modern living within easy walking distance of Maynards Green Primary School, the local golf club, the popular Cuckoo Trail, and Horam High Street. The property welcomes you with a generous entrance hall, complete with useful storage, leading through to a bright and comfortable lounge featuring a bespoke media wall—perfect for relaxing or entertaining. A convenient downstairs WC and additional understairs storage add to the practicality of the ground floor. To the rear, the heart of the home is a stunning kitchen/diner, installed just a couple of years ago and finished to a high standard. It boasts a range of built-in appliances and a central island with seating for up to eight people, making it an ideal space for family life and social gatherings. Doors open directly onto a patio and garden area, which enjoys a peaceful woodland backdrop. Upstairs, the first floor offers four well-proportioned bedrooms. Two are small doubles with ample space for furniture, while the second bedroom is particularly spacious. The principal bedroom is a generous size and benefits from its own en-suite. A modern family bathroom serves the remaining bedrooms. Externally, the property provides off-road parking to the side for up to three vehicles, along with additional visitor parking for guests. Finished to a high standard throughout, this is a superb family home in a desirable and convenient location.

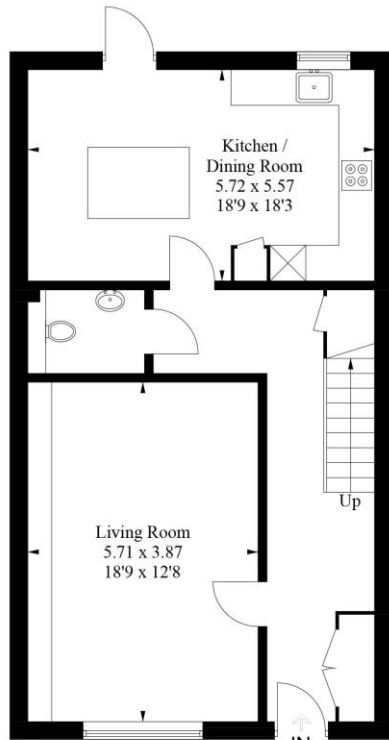
Uckfield 01825 703000  
Crowborough 01892 489000  
Heathfield 01435 511800

Peter Oliver

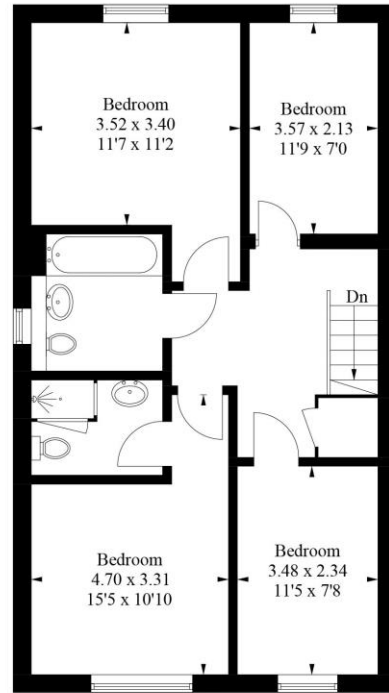
The Property  
Ombudsman

The Property  
Ombudsman  
LETTINGS





Ground Floor



First Floor

**Horam Heathfield, TN21**

Approximate Gross Internal Area = 127.3 sq m / 1370 sq ft

Illustration for identification purposes only, measurements are approximate, not to scale. (ID1296653)



TENURE: FREEHOLD

COUNCIL TAX BAND: C

MAINTENANCE/SERVICE CHARGE: £300pa

Uckfield 01825 703000  
 Crowborough 01892 489000  
 Heathfield 01435 511800  
 info@peteroliverhomes.co.uk

Peter Oliver

