



**OVER 60?**

Secure this property  
for up to **59% less!**

**Guide Price**  
**£135,000**

**Leasehold**

2x  1x  1x 

**Cross Street, Sandown,  
Isle of Wight, PO36**

**Pittis**   
Helping you move forwards





## Main features

- Well presented first floor apartment
- Private garden and allocated off road parking
- Offered with no onward chain
- Perfect home for a first time buyer or buy to let investment
- Ideal location close to Sandown's town centre and beaches

## Accommodation

### FIRST FLOOR

Utility Room: 8'0 6 x 6'7 (2.44m x 2.01m)

Kitchen/Living Room: 11'6 x 11'5 (3.51m x 3.48m)

### Bathroom

Bedroom 1: 11'9 x 11'5 (3.58m x 3.48m)

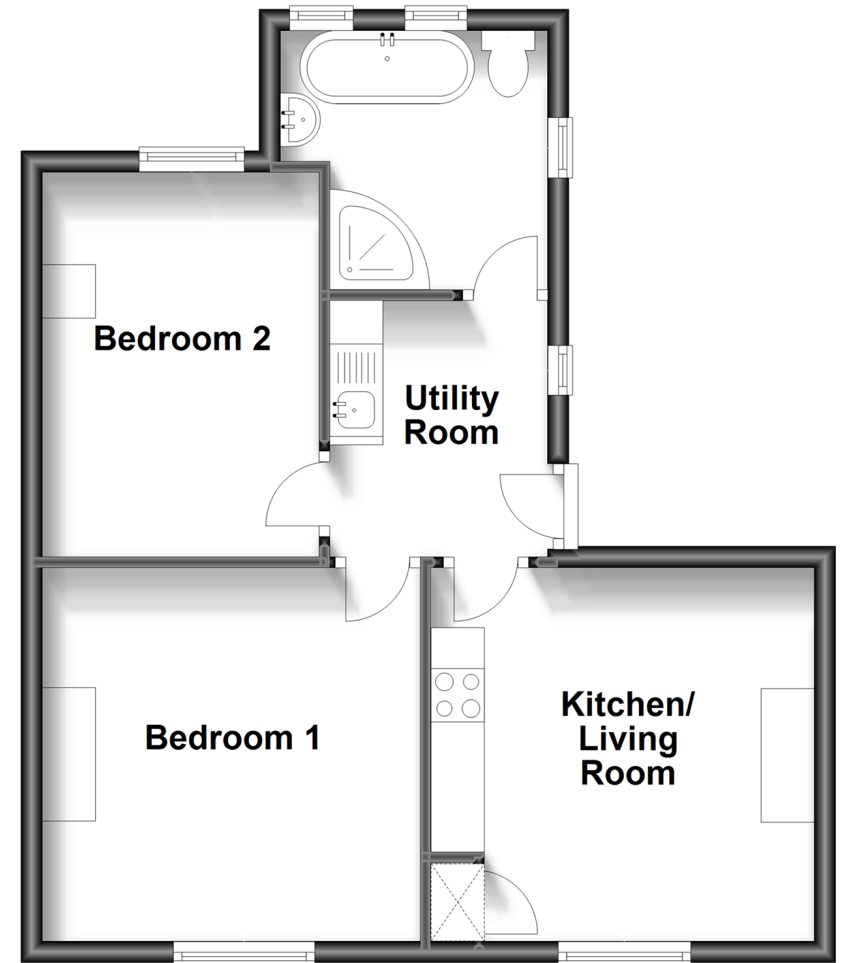
Bedroom 2: 11'9 x 8'7 (3.58m x 2.62m)

### OUTSIDE

Private Garden  
Parking

## First Floor

Approx. 46.3 sq. metres (498.0 sq. feet)



**Call Sandown - 01983 407444 ■ [pittis.co.uk](http://pittis.co.uk)**

- Legal advice should be taken to verify fixtures/fittings, planning, alterations and/or lease details
- Appliances & services are untested, dimensions are approximate and floor plans are not to scale
- Through a Homewise Home For Life Plan people aged 60+ can secure this property for up to 50% less, by purchasing a Lifetime Lease.



60520800/20251024/BB/NR