



Blackheath Village, SE3

£500,000

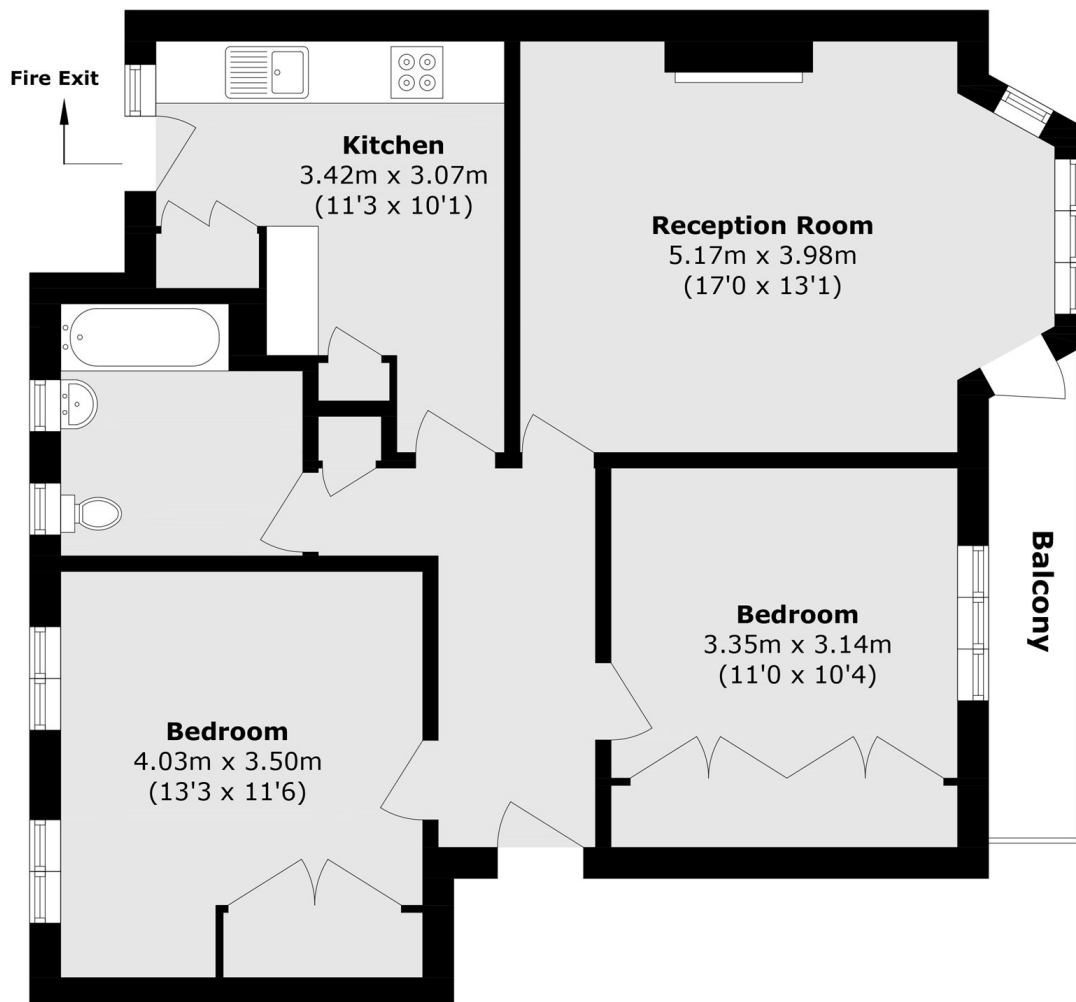
A well presented top floor two double bedroom apartment set within the sought-after Selwyn Court, ideally located in the heart of Blackheath Village. The property offers a spacious and light-filled reception room with direct access to a private balcony, providing an excellent space for both relaxing and entertaining. The separate kitchen has been finished to a good standard and features fully integrated appliances, offering a clean and contemporary feel. The kitchen was completely refurbished 2 years ago and boasts quality quartz countertops. Both bedrooms are generous double rooms, well proportioned and ideal for sharers, a small family or those working from home. The flat further benefits from its top floor position, creating a sense of privacy and natural light throughout.

Selwyn Court is ideally located in the heart of Blackheath Village, just moments from a fantastic selection of independent cafés, restaurants, boutiques and traditional pubs. Blackheath Station is a short walk away, offering excellent transport links into central London, making the property ideal for commuters. The open green spaces of Blackheath Common are also nearby, providing a perfect balance of village living and outdoor lifestyle, while the area is well known for its strong community feel and highly regarded local amenities.

Features

- Close To Blackheath Station
- Top Floor
- Two Double Bedrooms
- Private Balcony
- Central Location
- Tones Of Storage Throughout

Blackheath Village, London, SE3



Total area (approx.): 71.8 sq. m (772.8 sq. ft)
Balcony area (approx.): 4.0 sq. m (43 sq. ft)