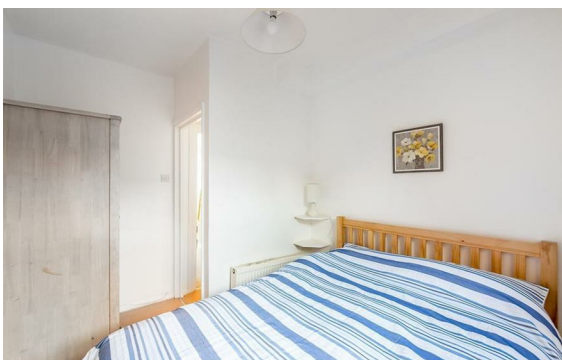


Daventry Street, Marylebone, London, NW1

Rent £500 PCM

1 Bed | 1 Bath | 1 Reception

Please call us on 020 7724 2233 or email us info@newingtonstates.com to book a viewing.



A well-presented one-bedroom apartment offering practical living space in a sought-after central London location. The property features a bright open-plan reception room and kitchen, a double bedroom, and a modern bathroom. The apartment is ideally suited to a single professional seeking a convenient London base.

Located in the heart of Marylebone, the property is within easy reach of Baker Street Station and Marylebone Station, with excellent transport links across London.

EPC Rating: C

Energy Efficiency Rating: C

Agents Note: Whilst every care has been taken to prepare these particulars, they are for guidance purposes only. All measurements are approximate and are for general guidance purposes only and whilst every care has been taken to ensure their accuracy, they should not be relied upon and potential buyers/tenants are advised to recheck the measurements.

NEWINGTON
— ESTATES —

60 Upper Montagu Street

London

W1H 1SN

020 7724 2233

info@newingtonestates.com

<http://www.newingtonestates.com>