



Lushington Road, NW10

£750 Per week

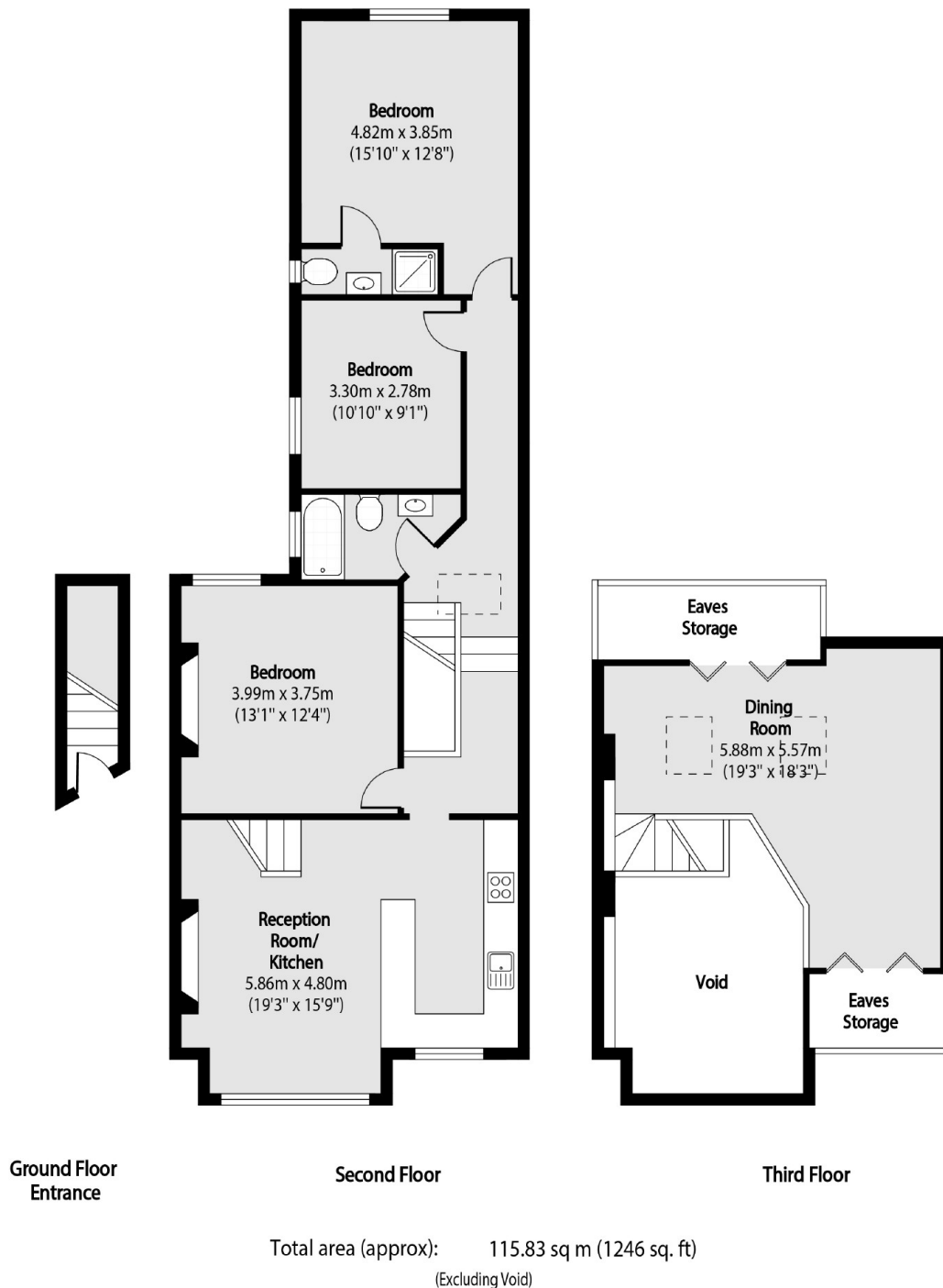
A unique three double bedroom split level apartment set on the top two floors of an Edwardian conversion finished to a good specification with wooden flooring throughout. There is a generous open plan living area with an additional reception on the mezzanine level.

Lushington Road is in close proximity to the shops, cafes and restaurants of Chamberlayne Road, and just beyond, Salusbury Road in Queen's Park. Transport links include Kensal Rise(Overground) and Kensal Green(Bakerloo & Overground).

Features

- Three Bedrooms
- Two Bathrooms
- Two Receptions
- Wooden Flooring
- Open Plan
- Split Level

Lushington Road, London, NW10



Dexters

Kensal Rise & Queen's Park
62 Chamberlayne Road
London
NW10 3JJ
Lettings
020 8600 3101

Energy Rating: E. We aim to make our particulars both accurate and reliable. However they are not guaranteed; nor do they form part of an offer or contract. If you require clarification on any points then please contact us, especially if you're traveling some distance to view. Please note that appliances and heating systems have not been tested and therefore no warranties can be given as to their good working order.

 **RICS** | Regulated
Estate Agent
and Letting Agent

[dexters.co.uk](https://www.dexters.co.uk)