



Brays Road, Birmingham

burchell
edwards



Property Description

Step inside to a warm and inviting lounge, perfect for relaxing or entertaining. To the rear, the impressive extended kitchen provides generous workspace, contemporary units, and room for dining—an excellent hub for family life.

Upstairs, the property offers three comfortable bedrooms and a family bathroom. Outside, the private driveway adds valuable convenience, while the rear garden provides a great space for outdoor enjoyment.

Located within easy reach of local amenities, transport routes, and popular schools, this home combines practicality with comfort in a sought-after residential area.

Lounge

Double glazed bay window to front elevation, central heating radiator and wood effect laminate flooring.

Dining Room

Central heating radiator.

Kitchen

Double glazed window and French doors to rear elevation, a range of wall and base units with work surface over incorporating a sink with drainer unit, gas hob and oven, plumbing for washing machine and spotlights.



Bedroom One

Double glazed window to front elevation, central heating radiator and carpet.

Bedroom Two

Double glazed window to rear elevation, central heating radiator and carpet.

Bedroom Three

Double glazed window to rear elevation, central heating radiator and carpet.

Bathroom

Double glazed window to front elevation, bath with shower over, W.C, wash hand basin and extractor.

Front Garden

Block paved driveway providing off road parking.

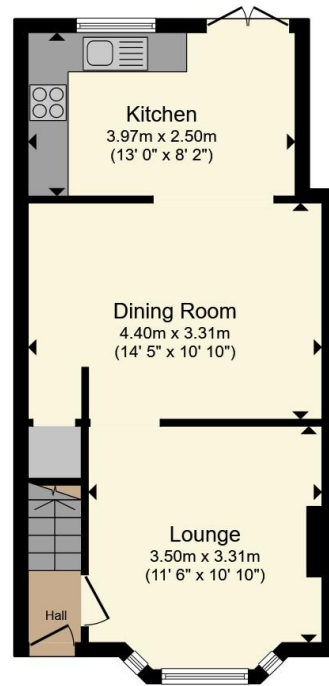
Rear Garden

Decked steps leading down to lawn.

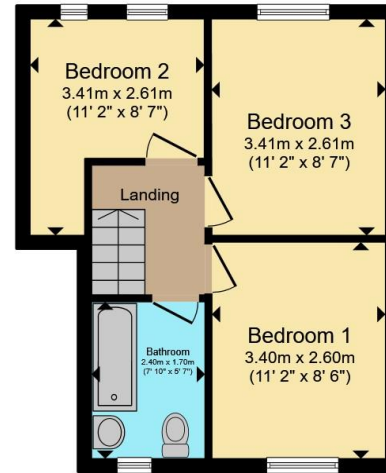








Ground Floor



First Floor

Total floor area 73.4 m² (790 sq.ft.) approx

This floor plan is for illustrative purposes only. It is not drawn to scale. Any measurements, floor areas (including any total floor area), openings and orientation are approximate. No details are guaranteed, they cannot be relied upon for any purpose and they do not form part of any agreement. No liability is taken for any error, omission or misstatement. A party must rely upon its own inspection(s). Powered by www.propertybox.io



To view this property please contact Burchell Edwards on

T 0121 742 1725
E sheldon@burchelledwards.co.uk

2208 Coventry Road Sheldon
BIRMINGHAM B26 3JH

EPC Rating: D Council Tax
Band: B

Tenure: Freehold

view this property online burchelledwards.co.uk/Property/SHL211536



1. MONEY LAUNDERING REGULATIONS Intending purchasers will be asked to produce identification documentation at a later stage and we would ask for your co-operation in order that there will be no delay in agreeing the sale. 2. These particulars do not constitute part or all of an offer or contract. 3. The measurements indicated are supplied for guidance only and as such must be considered incorrect. Potential buyers are advised to recheck measurements before committing to any expense. 4. We have not tested any apparatus, equipment, fixtures, fittings or services and it is in the buyers interest to check the working condition of any appliances.

Burchell Edwards is a trading name of Connells Residential which is registered in England and Wales under company number 1489613, Registered Office is Cumbria House, 16-20 Hockliffe Street, Leighton Buzzard, Bedfordshire, LU7 1GN. VAT Registration Number is 500 2481 05.

See all our properties at www.burchelledwards.co.uk | www.rightmove.co.uk | www.zoopla.co.uk

Property Ref: SHL211536 - 0009