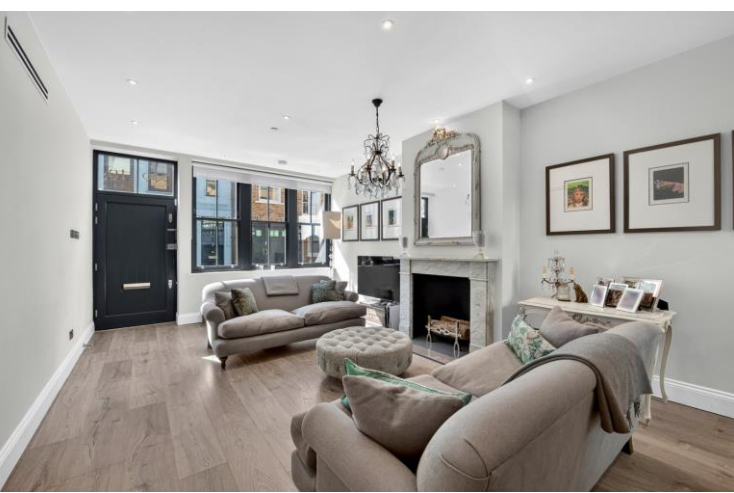




Leinster Mews
London, W2

CHESTERTONS





Tucked away on a quiet cobbled mews in W2, this four-bedroom house offers a strong sense of space and a clean, well-executed finish throughout. Extending to approximately 2,328 sq ft, the proportions are what set it apart.

The kitchen and dining room is a standout, designed around a large central island with stone worktops and bespoke cabinetry. To the front, the reception room is composed and well proportioned, with strong natural light and a fireplace adding contrast to the otherwise clean finish. It is a properly scaled space that defines the house.

The upper floors are arranged with a clear sense of separation, giving each room its own space without feeling fragmented. The principal bedroom sits comfortably with a walk in wardrobe and en suite, while the remaining bedrooms are all en suite and well positioned, offering flexibility without compromising on size. An integrated garage adds a practical edge that is not often available in this setting.

A house that feels considered, with a layout that holds up in practice.

- Four-bedroom mews house with four en-suite bathrooms
- Approx 2,328 sq.ft.
- Large kitchen and dining room with bespoke cabinetry and central island
- Stone worktops and integrated appliances
- Separate reception room with fireplace
- Good natural light throughout
- Principle bedroom with en-suite
- Integrated garage
- Close to Hyde Park and Kensington Gardens
- Strong transport links (Circle & District, Central and Elizabeth Line)

Offers In Excess Of £3,000,000

Score	Energy rating	Current	Potential
92+	A		
81-91	B	81 B	86 B
69-80	C		
55-68	D		
39-54	E		
21-38	F		
1-20	G		

Tenure: Freehold
Service Charge: None
Ground Rent: None
Local Authority: Westminster
Council Tax Band: G

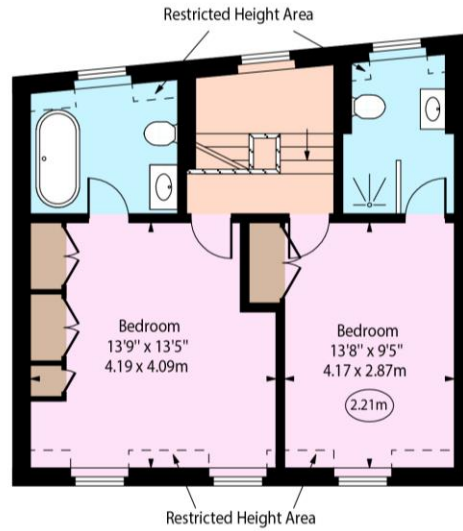
Chestertons Hyde Park & Marylebone Sales

40 Connaught Street
 London
 W2 2AB
 hydepark@chestertons.co.uk
 020 7298 5900
 chestertons.co.uk

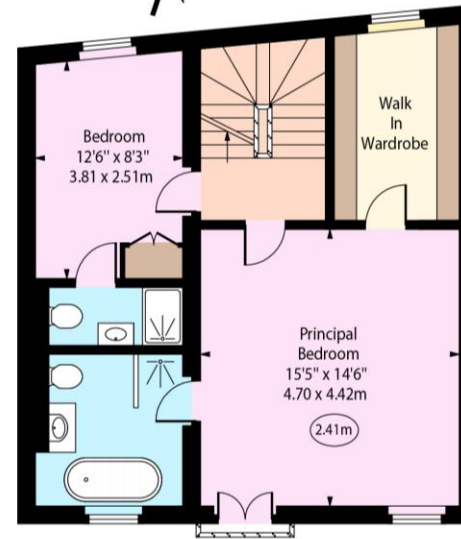
Leinster Mews, W2



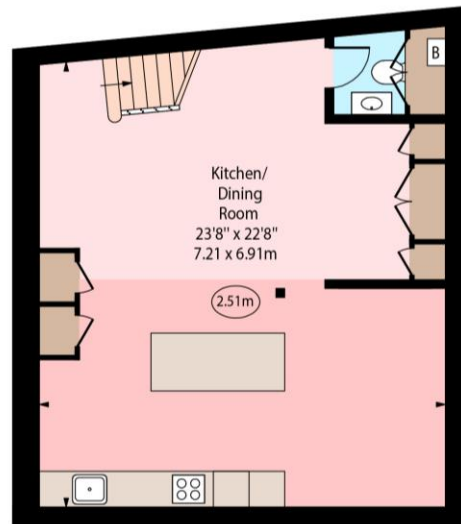
○ - Ceiling Height



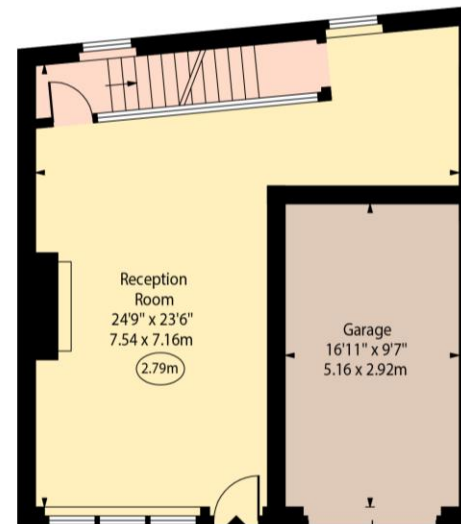
Second Floor



First Floor



Lower Ground Floor



Ground Floor

Approx Gross Internal Area 2328 Sq Ft - 216.27 Sq M
 Approx. Floor Area Including Restricted Heights 2348 Sq Ft - 218.13 Sq M
 (Including Garage)

Chesterton UK Services Limited trading as Chestertons for themselves and for the vendor of this property whose agents they are, give notice that (i) these particulars do not constitute any part of an offer or contract, (ii) all statements contained within these particulars are made without responsibility on the part of Chestertons or the vendor, (iii) whilst made in good faith, none of the statements contained within these particulars are to be relied upon as a statement or representation of fact, (iv) any intending purchasers must satisfy themselves by inspection or otherwise as to the correctness of each of the statements contained within these particulars, (v) the vendor does not make or give either Chestertons or any person in their employment any authority to make or give representation or warranty whatsoever in relation to this property. Wide angle lenses may be used. ©Copyright Chestertons | Chesterton UK Services Limited | Registered Office 5th Floor, The Lantern, 75 Hampstead Road, London, NW1 2PL Registered Company Number 05334580.



This paper is 100% recyclable