

FLAT 22  
50 SLOANE ST  
LONDON SW1X 9SN



## L O C A T I O N

---

50 Sloane Street is centrally located in the centre of Knightsbridge. It benefits from all the superb exclusive shops, high end retails and exquisite hotel brands and restaurants.

The area offers great transport links, with Sloane Square and Knightsbridge stations being a stone throw away. 5 minutes walk to Hyde Park with Cadogan Place Park right at your front door. It is indeed an enviably position in the heart of London.

---

# EXQUISITE NEIGHBORHOOD

Like Avenue Montaigne in Paris and New York's Madison Avenue, Sloane Street serves one of the world's most affluent local neighbourhoods through its exclusivities.

Chosen by Tom Ford, Giorgio Armani, Alberta Ferretti and many other exquisite brands as home to their only stores in the UK. The neighbourhood is one of the world's most affluent residential catchments. Cultural attractions within walking distance include the leading contemporary gallery Saatchi, innovative theatre at Royal Court-the world famous Chelsea Flower Show and Masterpiece exhibitions each year as well as Cadogan Hall- the home of the Royal Philharmonic Orchestra.



Hermès



Giorgio Armani

Tom Ford



Louis Vuitton

Cartier

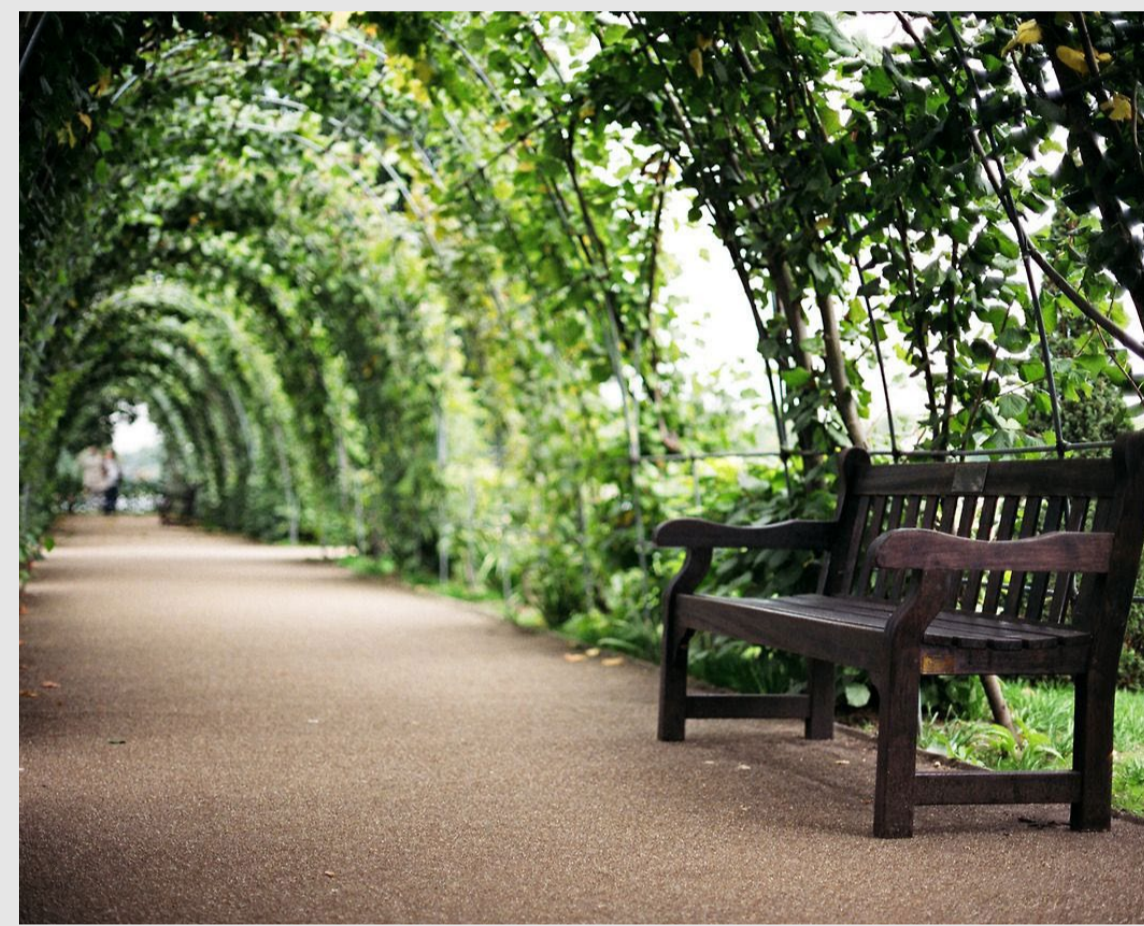


# ICONIC LANDMARKS

Michelin-starred restaurants and leading hotels create a sophisticated flow of visitors. The Belmond Cadogan Hotel on Sloane Street reopened after a comprehensive refurbishment, followed by a new 40-room boutique hotel just off Sloane Square, operated by Jean-Louis Costes. With the Cardogan Place Garden right opposite and Hyde Park is a merely 10 minutes leisure walk making this property one of the highly sought after location on the market.



Serpentine Bridge, Hyde Park



The Cardogans Hotel



Harrods, London



The Saatchi Gallery



Cardogan Place Garden

# T H E   A P A R T M E N T



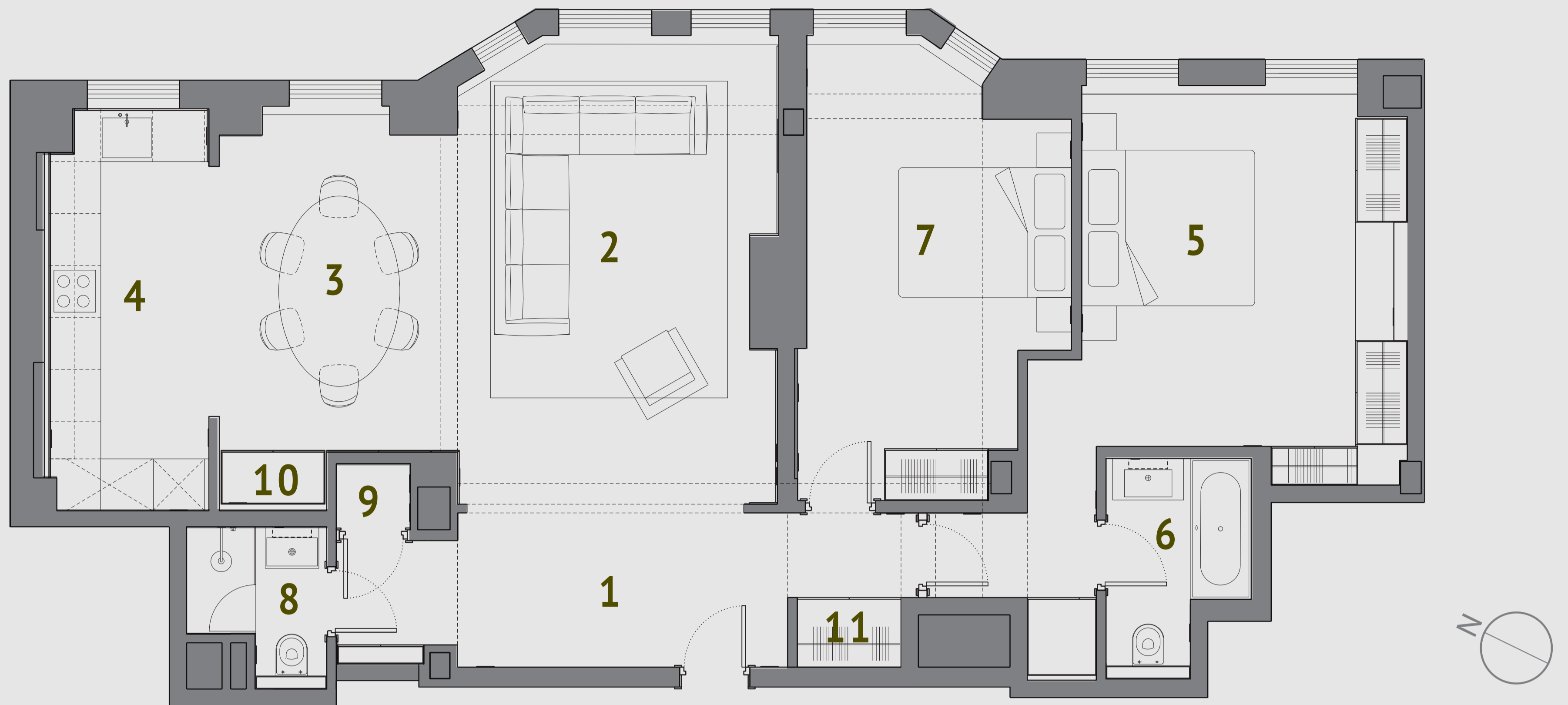
---

The property is an exquisitely presented two-bedroom apartment features windows over looking the Cardogan Place Park with abundance of natural lights. An entrance lobby with spacious living room, a fully equipped kitchen with modern appliances and branded fittings and ample amount of storage in meticulously built cabinetry. The open kitchen maintains intimate visual relationship to invited guests in dining and living area. Oak chevron wood flooring throughout ensuring aesthetic coherence to the Art Deco tone of the building.

The Master bedroom with built in panel joinery wardrobe, provides ample storage space, new ensuite meticulously redesigned, crafted and exquisitely selected designer vanity and hardware fixtures maintaining consistent design palettes throughout.

The second bedroom is carefully repartioned and refitted with sufficient built-in wardrobe creating a comfortable sized bedroom which could easily be converted into an office space if required.

The building benefits central heating, resident porter and 24hr CCTV security for this prestigious residence in the heart of London.



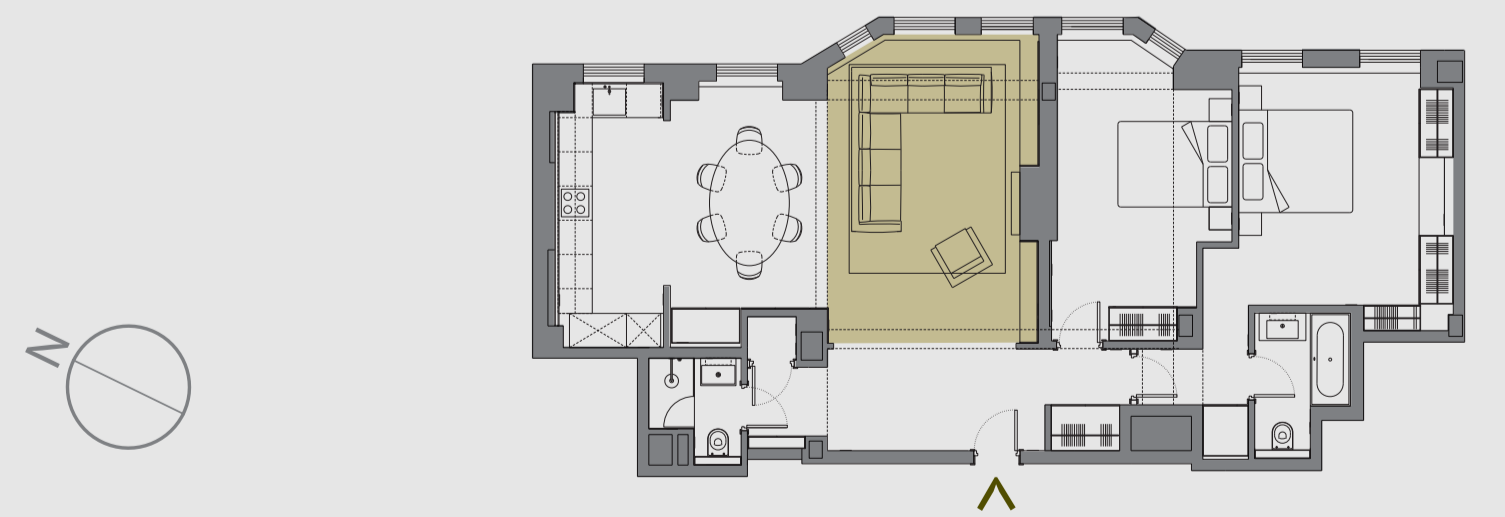
P L A N

- 
- 1 ENTRANCE LOBBY
  - 2 LIVING
  - 3 DINING
  - 4 KITCHEN
  - 5 MASTER BEDROOM
  - 6 MASTER ENSUITE
  - 7 BEDROOM 2
  - 8 GUEST BATHROOM
  - 9 LAUNDRY / UTILITY
  - 10 WINE BAR
  - 11 CLOAK
- 

GIA approx. 102.93 sqm / 1,108 sqft

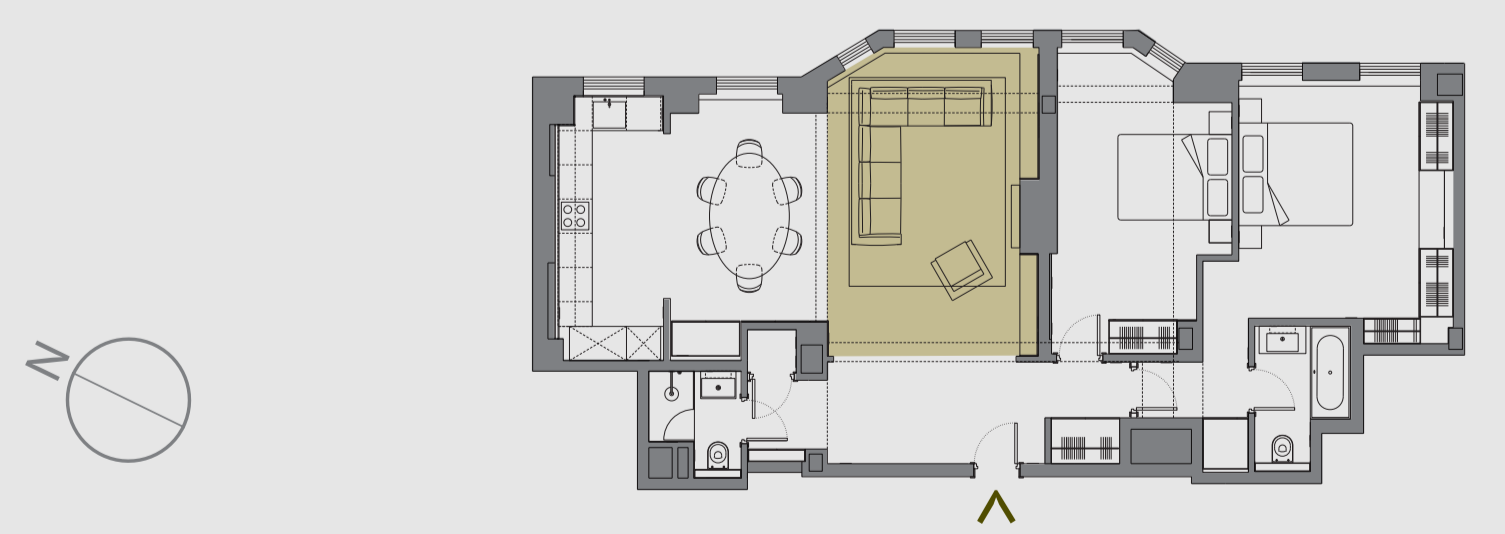


LIVING



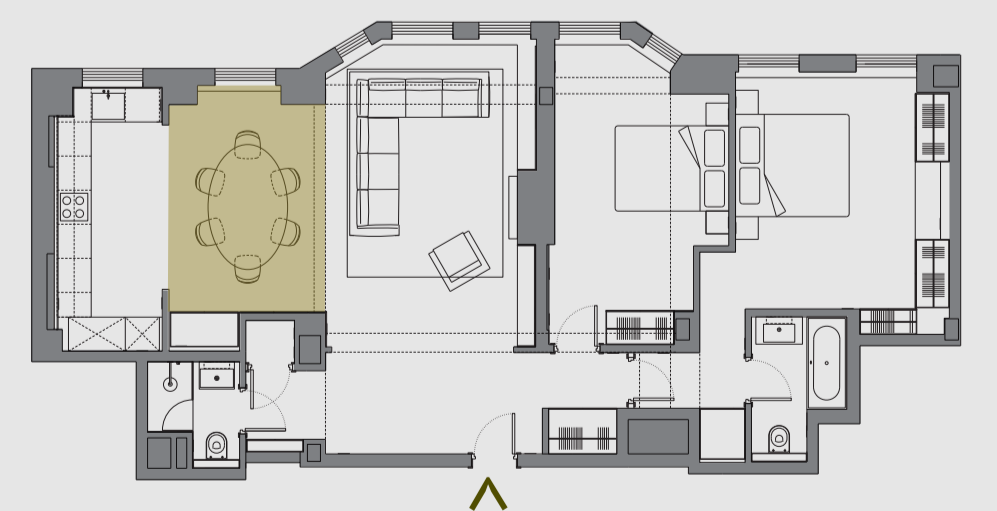


LIVING



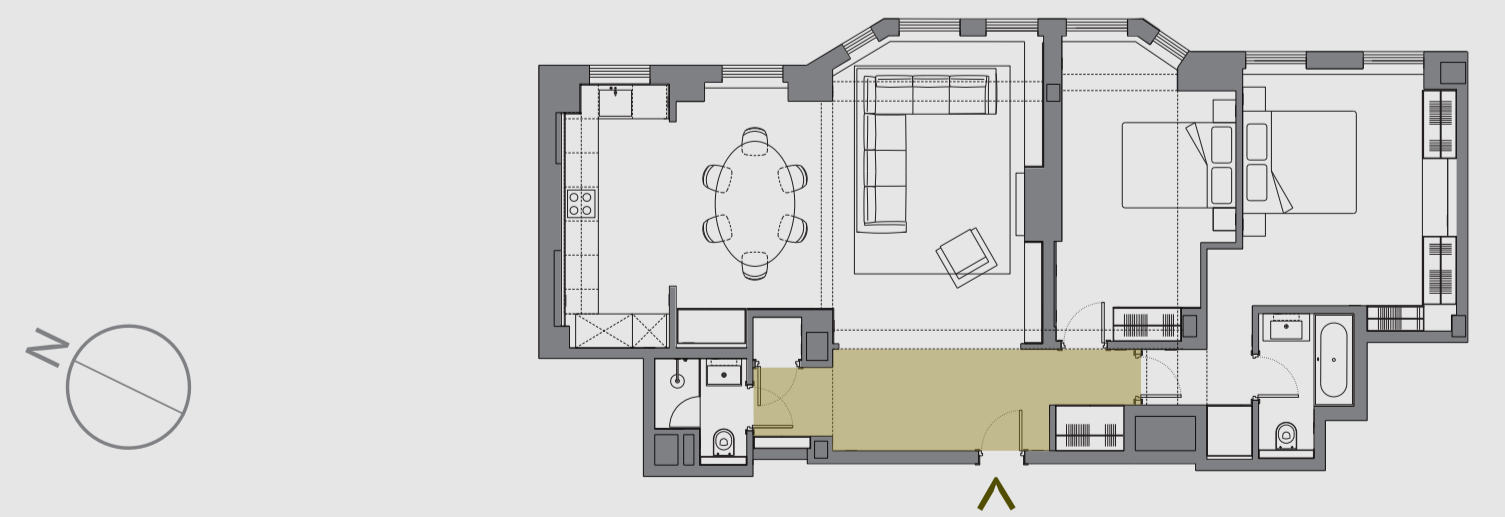


LIVING | DINING



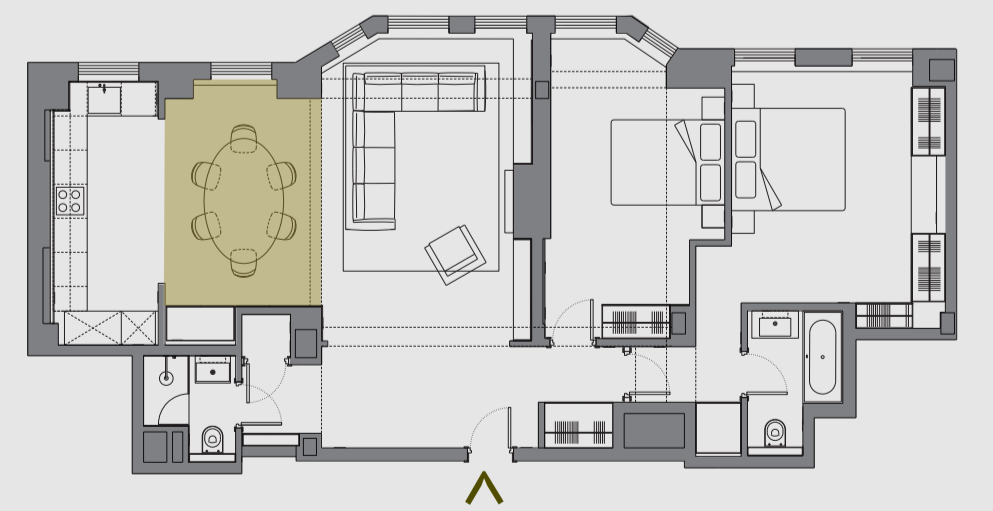
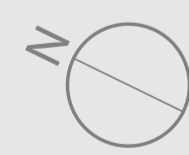


ENTRANCE LOBBY



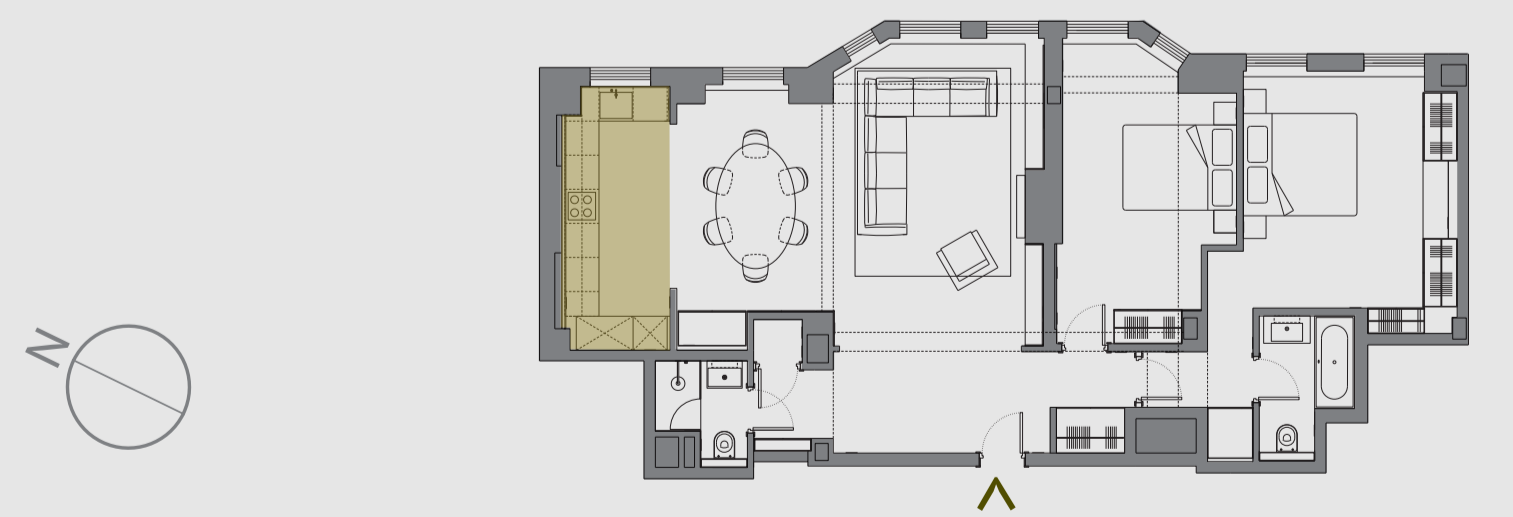


D I N I N G



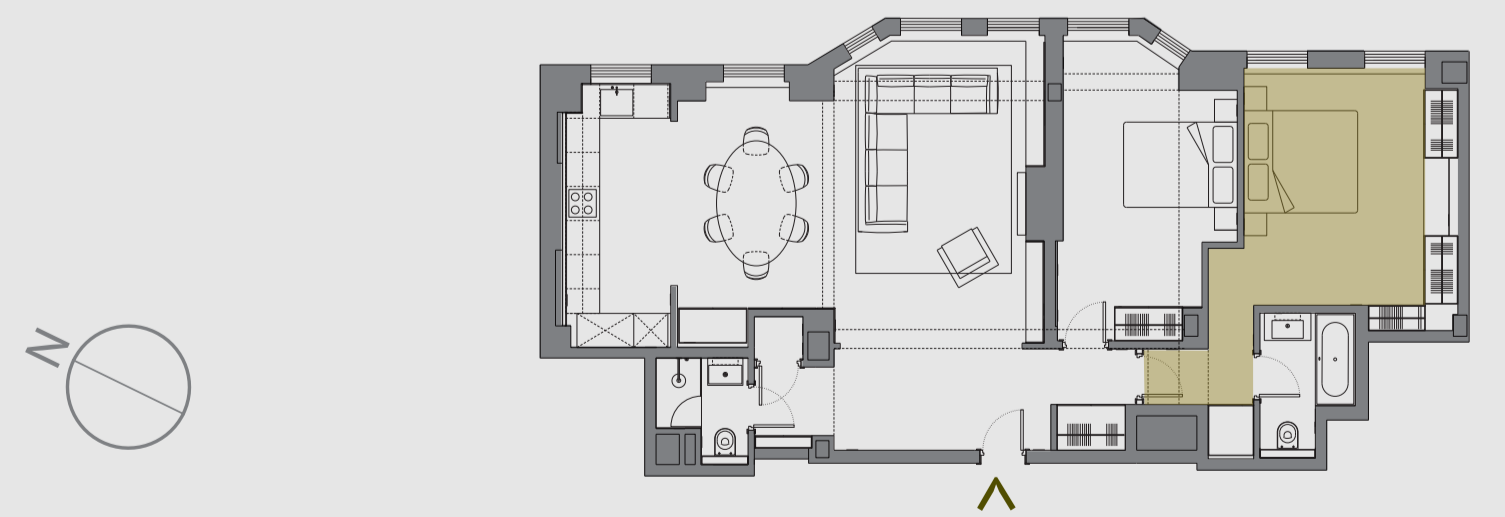


KITCHEN



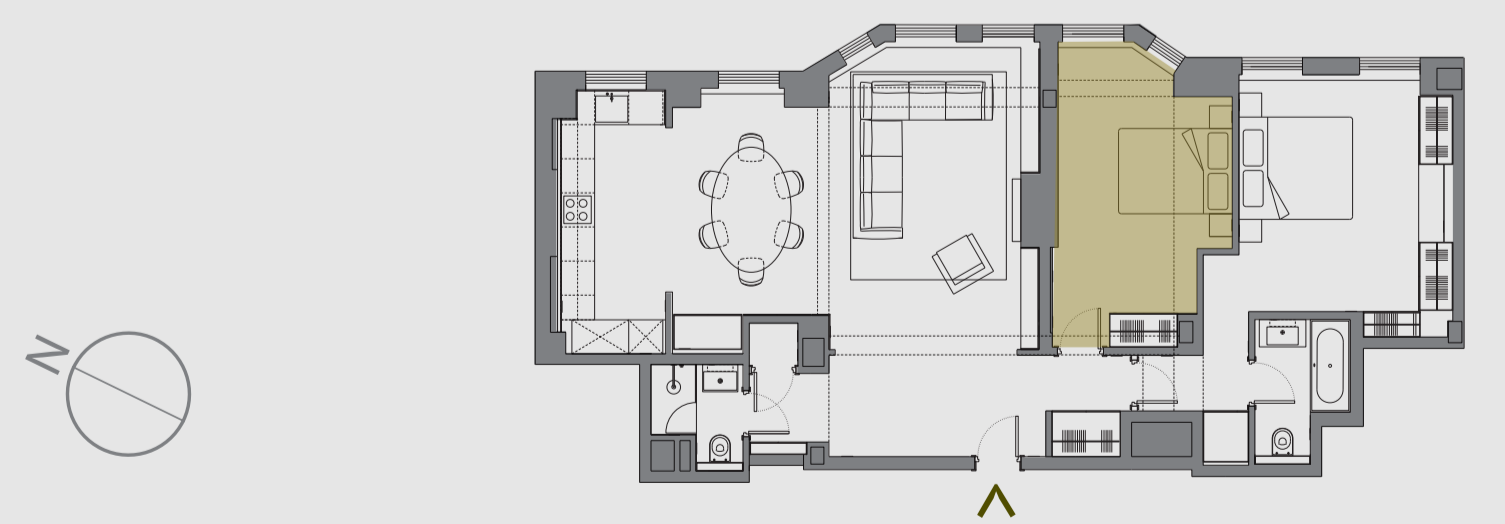


MASTER BEDROOM



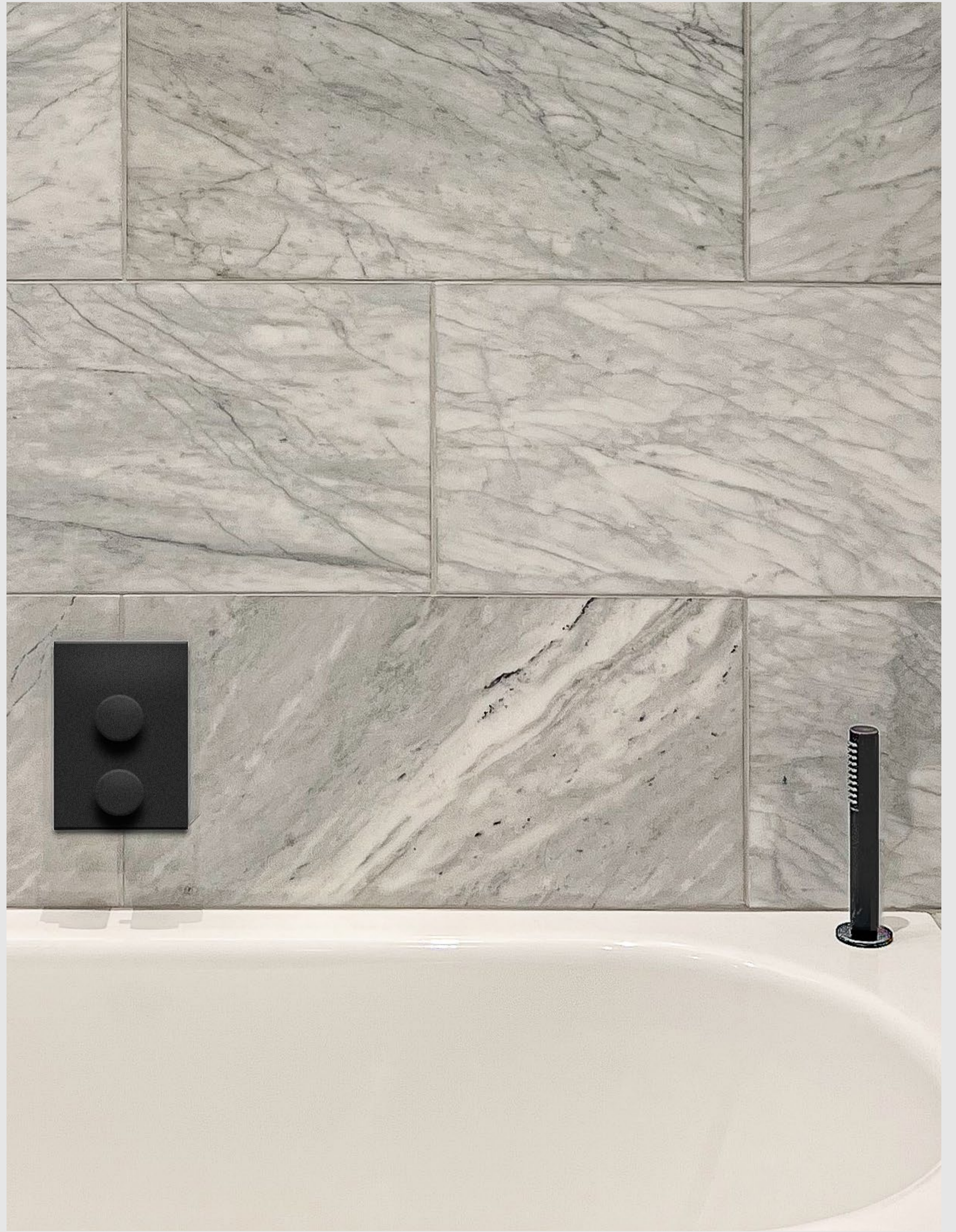
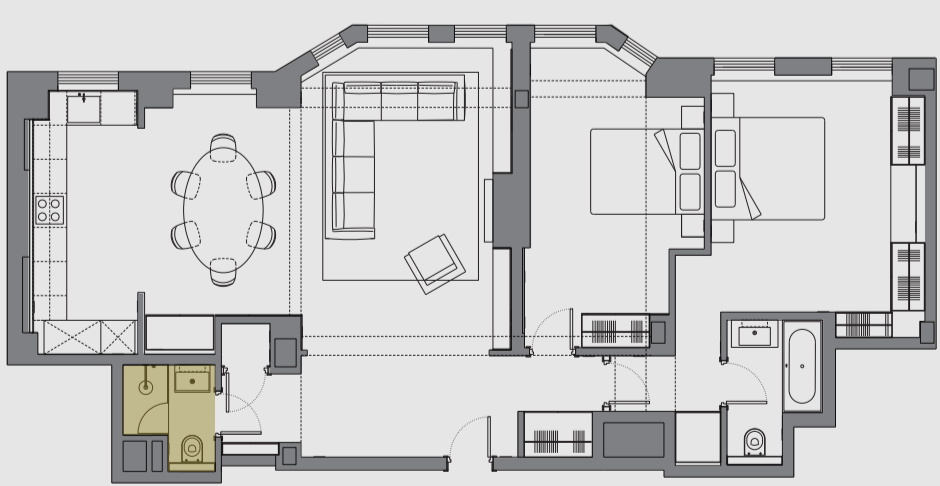


B E D R O O M 2

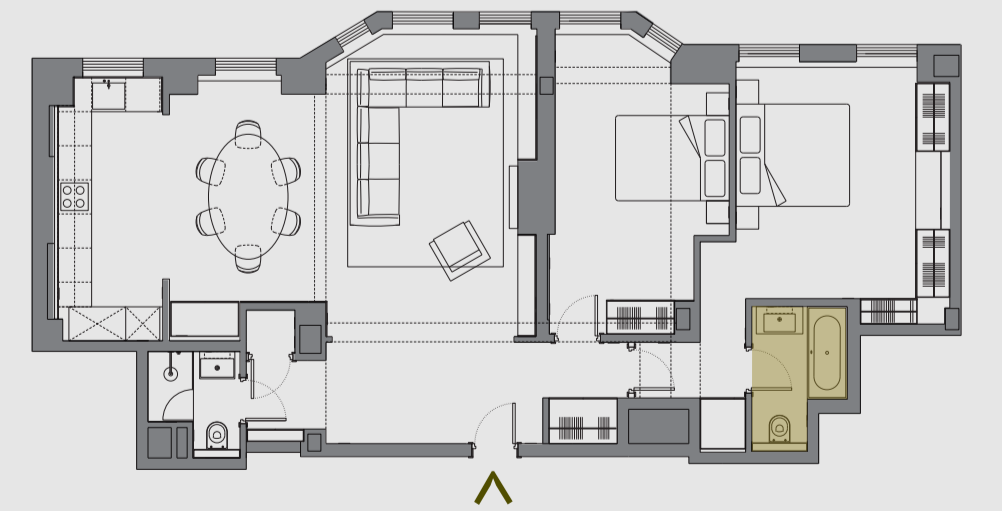




GUEST BATHROOM

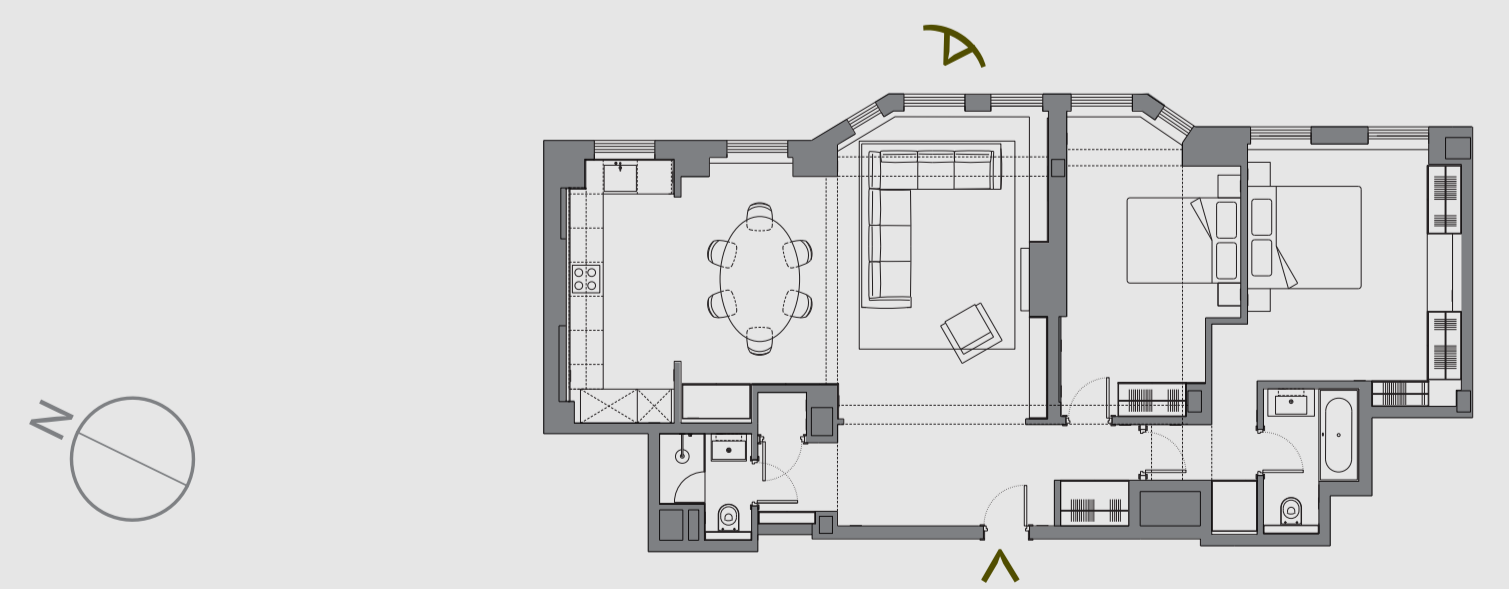


ENSUITE





V I E W   T O   C A R D O G A N   P L A C E   G A R D E N



An aerial photograph of a wooden floor with a herringbone pattern. The planks are arranged in a V-shape, creating a rhythmic, geometric pattern. The wood has a natural, light brown tone with visible grain and some knots. The lighting is even, highlighting the texture of the wood.

FLAT 22

50 SLOANE ST

AERA