



Richmond Hill Court, TW10

£3,500 Per calendar month

A beautifully presented three-bedroom apartment set within a sought-after portered development on Richmond Hill.

Richmond Hill Court is perfectly positioned to enjoy the very best of Richmond living and moments from a variety of boutique shops, cafés, restaurants, and pubs, as well as several highly regarded schools. Richmond Park, with its vast open spaces and scenic walking trails, is just half a mile away, while Richmond Station provides excellent transport links to London Waterloo and beyond.

Features

- Three Bedrooms
- Third Floor
- Wood Flooring
- On-site Porter
- Tennis Courts
- Lift Access



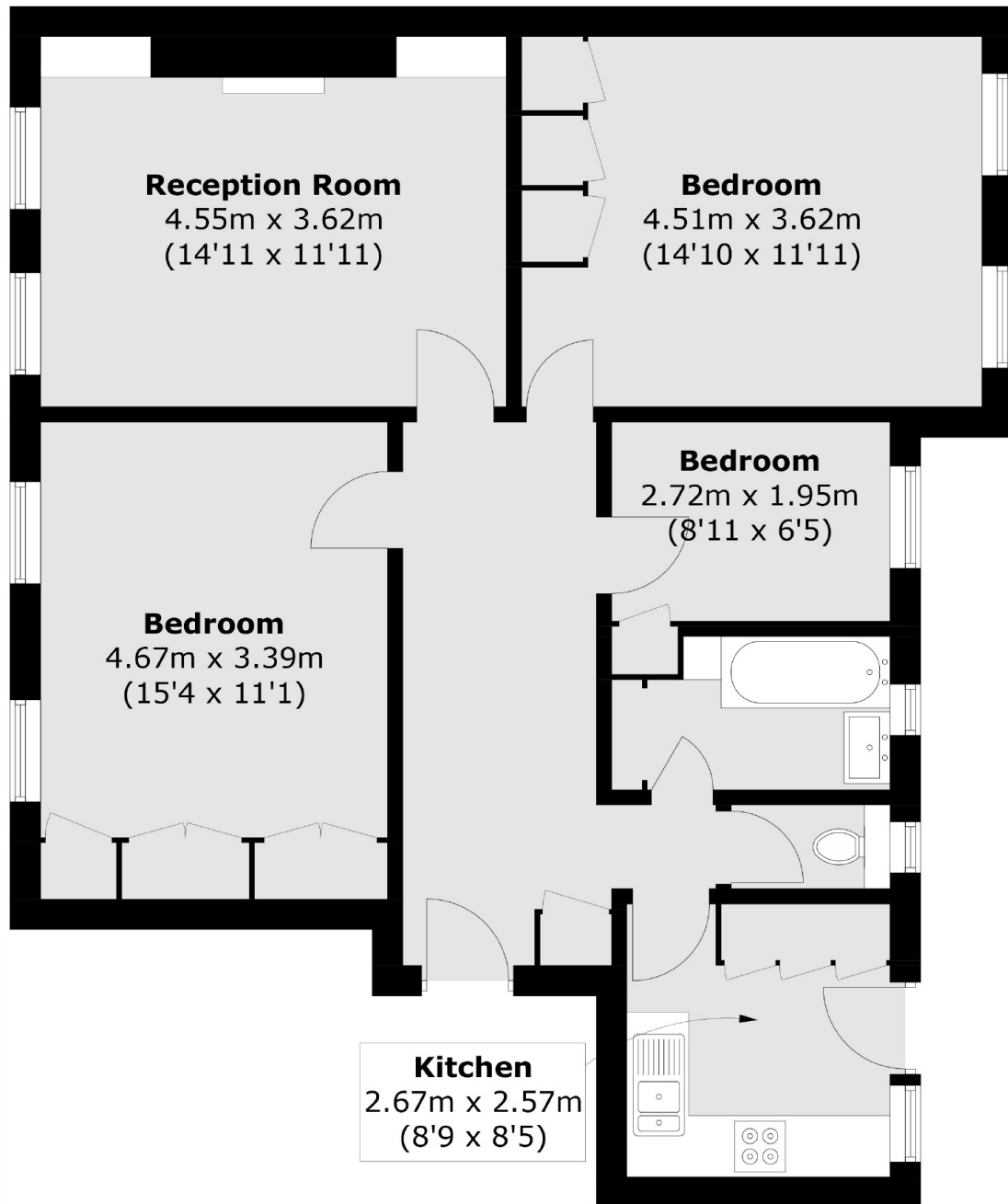
Richmond Hill Court, TW10

The well-balanced accommodation includes two generous double bedrooms, single bedroom or study, bright and spacious living room, separate modern kitchen, welcoming entrance hallway, and a stylishly appointed bathroom with a separate WC.

Additionally, the property has wooden flooring, ample built-in storage, lift access, and the convenience of an on-site porter. Residents also enjoy access to private tennis courts, adding to the lifestyle appeal of this well-maintained development.



Richmond Hill Court, Richmond, TW10



Total area (approx.): 82.0 sq. m (882.6 sq. ft)