



Whittlebury Mews West, NW1

£1,850,000

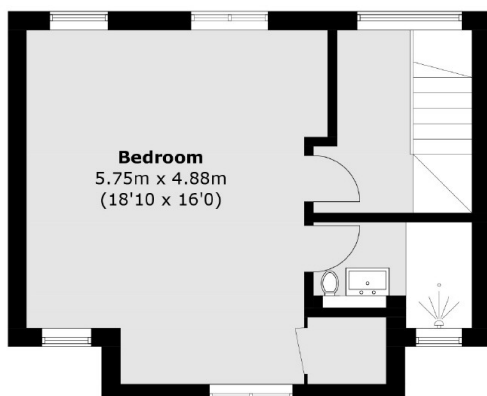
A modern four bedroom, four bathroom house arranged over four floors with a private internal courtyard and off street parking. The property is offered with a long lease.

Whittlebury Mews is located a short distance to the open green space of Primrose Hill and a large range of local shops, cafés and restaurants on Regent Park Road.

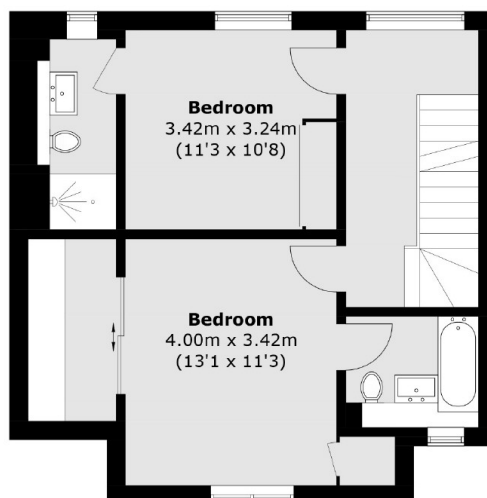
Features

- Four Bedroom House
- Four Bathrooms
- Arranged Over Four Floors
- Secure Parking
- Private Terrace
- Primrose Hill

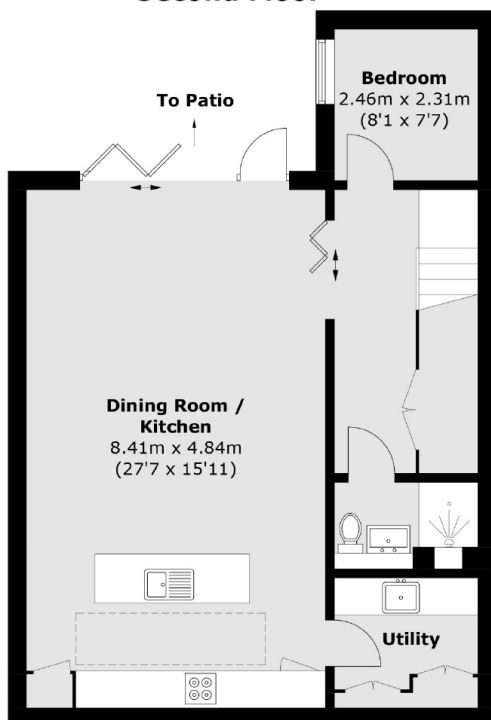
Whittlebury Mews West, London, NW1



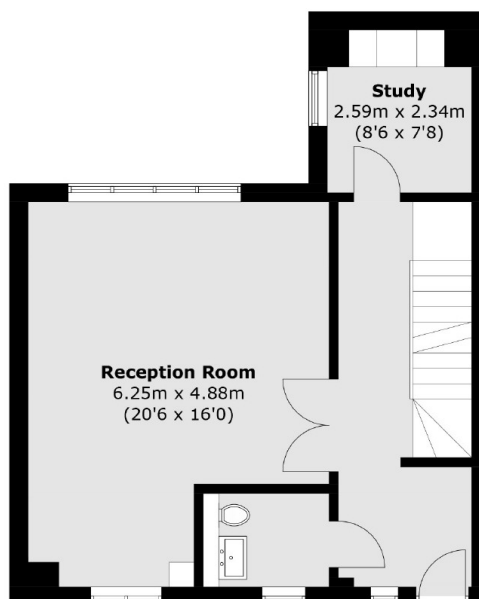
Second Floor



First Floor



Lower Ground Floor



Ground Floor

Total area (approx.): 209.2 sq. m (2,251.7 sq. ft)

Dexters

St. John's Wood
4-6 St Ann's Terrace
London
NW8 6PJ
Sales
020 7483 6300

Energy Rating: . We aim to make our particulars both accurate and reliable. However they are not guaranteed; nor do they form part of an offer or contract. If you require clarification on any points then please contact us, especially if you're traveling some distance to view. Please note that appliances and heating systems have not been tested and therefore no warranties can be given as to their good working order.

RICS | Regulated
Estate Agent
and Letting Agent

dexters.co.uk