



Let **UK** Home

2 Bedrooms

Flat

Located in London

£2,350 Per Month



info@letukhome.co.uk

<https://www.letukhome.co.uk/>

01795 358 886



Beaufort Square London

NW9 4BN



Let UK Home are excited to offer this spectacular 2 bedroom apartment in the heart of Capri House part of the Beaufort Park.

This property comprises a large bright open plan kitchen and living room leading to a large private balcony, two double bedrooms (master with built-in wardrobe & ensuite), a large family sized bathroom and ample storage.

Residents of this exceptional development will have exclusive use of the spa, indoor swimming pool, sauna, steam room, gymnasium and treatment room. Furthermore, residents will also benefit from a concierge and an unrivalled selection of shops, bars, restaurants, leisure facilities and beautiful landscaped courtyards.

The community is close to fashionable landmarks Hendon, Mill Hill, Golders Green and Hampstead Heath, and is also close to multiple shopping venues including Brent Cross Shopping Center. A short walk from the development lies Bang Bang Oriental Foodhall, London's largest integrated Asian leisure and dining destination. It houses a wide range of Japanese, Korean and Chinese eateries, plus a fully stocked Chinese supermarket and a cultural Chinese learning studio, perfectly catering to residents who love Asian cuisine and cultural activities.

Multiple bus stops and three Northern Line underground stations are within walking distance: Colindale, Hendon Central and Brent Cross.

Thanks to superb transport connections, tenants can travel swiftly to a host of top-tier London universities including Middlesex University, UCL, LSE, Imperial College London, Central Saint Martins and Bayes Business School (Cass).

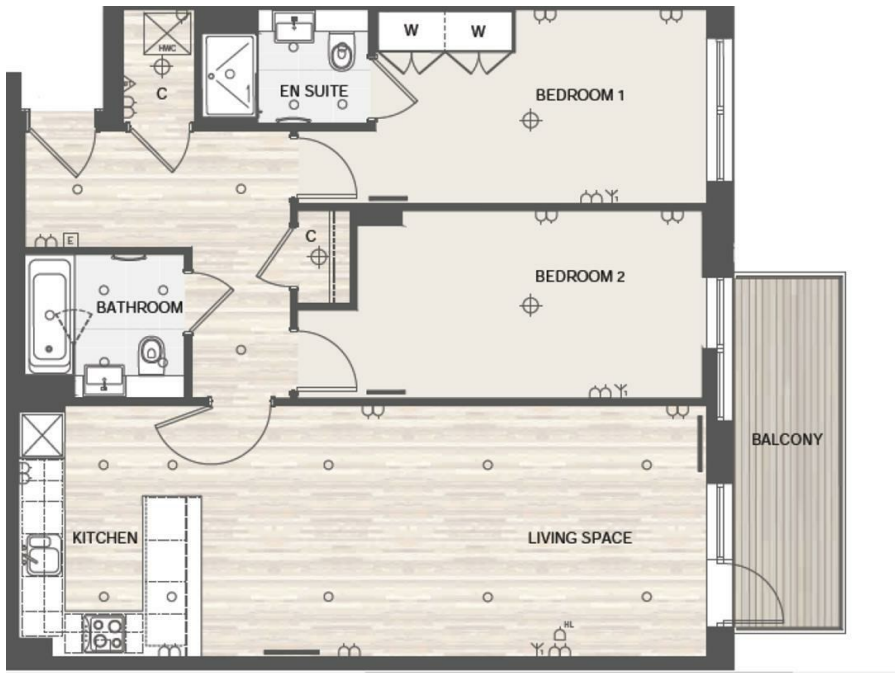
Beaufort Square London

£2,350 Per Month

- 2nd Floor
- 24h Security
- Swimming Pool
- Close to China Town
- Walk to Bang Bang Oriental Foodhall

- Concierge Service
- The Spa
- The Gym
- Walk to Tube Stations
- EPC Rating: C





2 Bedroom Apartment

Living Space	9.72m x 3.57m	32' 0" x 11' 9"
Bedroom 1	4.69m x 2.75m	15' 4" x 9' 0"
Bedroom 2	4.90m x 2.66m	16' 1" x 8' 9"



Let **UK** Home

3F 2 Eastbourne Terrace
Paddington
London
W2 6LG

01795 358 886

info@letukhome.co.uk

Council Tax Band: D

Local Authority:

Agents Note: Whilst every care has been taken to prepare these particulars, they are for guidance purposes only. All measurements are approximate and are for general guidance purposes only and whilst every care has been taken to ensure their accuracy, they should not be relied upon and potential buyers/tenants are advised to recheck the measurements.

Energy Efficiency Rating		Current	Potential
Very energy efficient - lower running costs			
(92 plus) A			
(81-91) B			
(69-80) C		76	76
(55-68) D			
(39-54) E			
(21-38) F			
(1-20) G			
Not energy efficient - higher running costs			
England & Wales	EU Directive 2002/91/EC		

<https://www.letukhome.co.uk/>