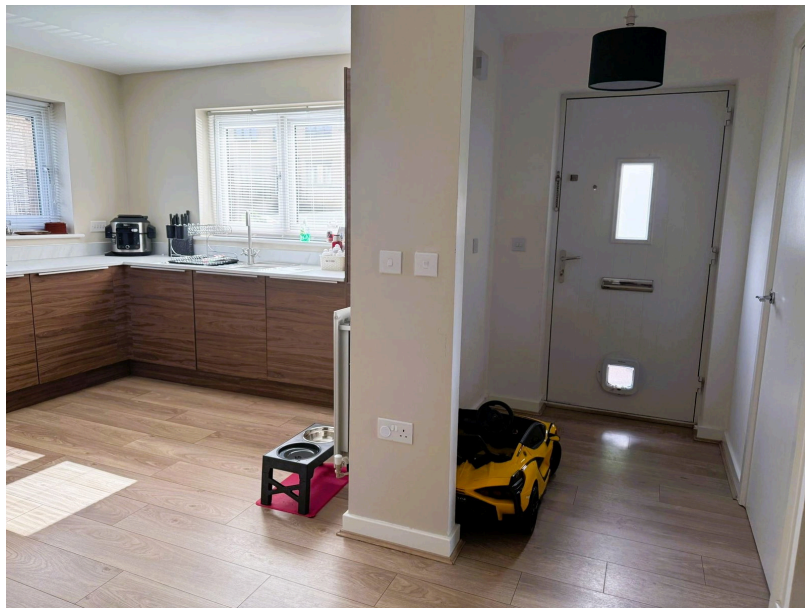




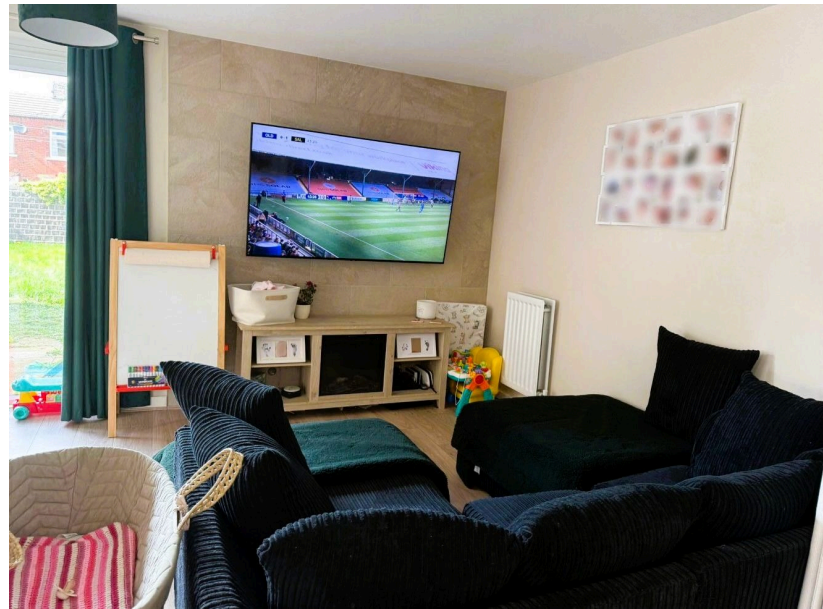
58 Turnstone Way, Crosland Moor, Huddersfield HD4 5FA

Offers Over £255,000

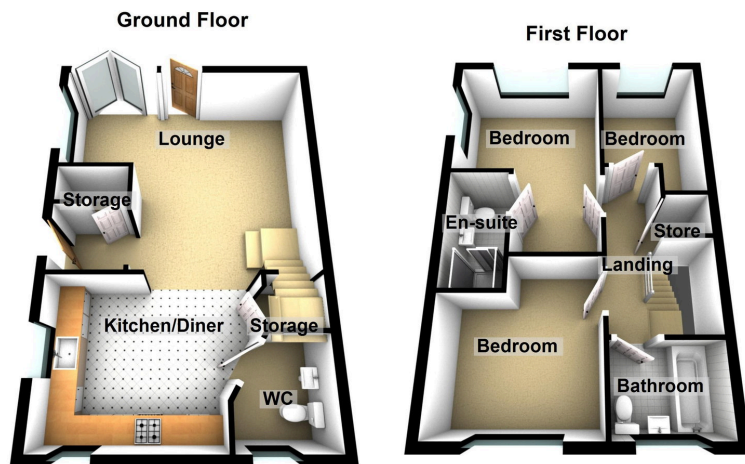
🛏 3 🚿 2 🚗 1



- Semi Detached
- Cul de Sac Location
- Perfect Family Home
- EPC - B
- Three Bedrooms (Master with En-suite)
- Beautifully Presented
- Large Rear Garden



If you are looking for a spacious, well presented modern family home, then this could be the one for you. Located in Crosland Moor, the property is in a quiet cul-de-sac location yet Huddersfield town centre, local transport links, amenities and good schools are nearby. Built in circa 2022 on the Fitzwilliam Grange Development the property is ideally suited to the young and growing family and will make a superb home for many years to come. Step inside the ample living space and you will find a beautiful modern open plan living area incorporating lounge and modern kitchen/dining plus, the added benefit of a downstairs wc. Off the first floor landing there are three bedrooms (two doubles and a good size single) with the master bedroom having a modern ensuite shower plus, there is a family bathroom. Outside you will find a driveway providing off street parking whilst to the rear there is a large lawned garden with patio area. Internal viewing is a must.



Energy Efficiency Rating		
	Current	Potential
Very energy efficient - lower running costs		
(92 plus) A		96
(81-91) B	84	
(69-80) C		
(55-68) D		
(39-54) E		
(21-38) F		
(1-20) G		
Not energy efficient - higher running costs		
England & Wales	EU Directive 2002/91/EC	

Chadderton Office

509 Middleton Road,
Chadderton, Oldham,
OL9 9SH

chadderton@kirkham-property.co.uk
t: 0161 626 5688