



Spencer.

Ryecroft Glen Road, Dore, S17

Rent —

Superbly located two double bedroom ground floor apartment in a quiet but ideal location having stunning communal grounds.

— from *Spencer.*

-
- AVAILABLE NOW
 - Ground floor apartment
 - Two double bedrooms
 - Ample lounge dining room
 - Stunning communal gardens
 - Unfurnished
 - Holding Deposit - £210
 - Security Deposit - £1,065
 - EPC Rating- D
 - Council Tax Band- C



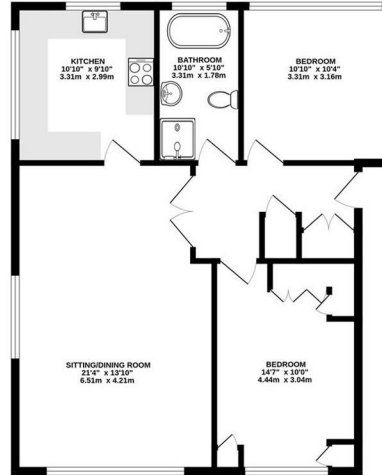
£925

PCM



Floorplan

GROUND FLOOR
791 sq.ft. (73.5 sq.m.) approx.



TOTAL FLOOR AREA: 791 sq ft (73.5 sq m.) approx.
While every effort has been made to ensure the accuracy of the floorplan, measurements of this nature are approximate and should not be used as a basis for any purchase or other transaction. They are for illustrative purposes only and should not be used as a basis for any purchase or other transaction. The actual layout and dimensions shown here are those shown and are not intended to be taken as a guarantee of accuracy. Measurements are made with Metron 3200.

Spencer.

+44 (0)114 268 3682
info@spencersestateagents.co.uk
469 Ecclesall Road, Sheffield, S11 8PP
SpencersEstateAgents.co.uk

SpencersAgents
SpencersAgents
SpencersEstateAgents

All enquiries and negotiations conducted via the Spencers office. We are obliged under the Estate Agent Act 1991 to qualify all offers and an independent mortgage consultant will speak to you to substantiate your details. The particulars are set out as a general outline only for guidance and do not constitute part of an offer or contract. Measurements are given in good faith and believed to be correct. Any prospective buyer should satisfy themselves as to the correctness of all statements and should not rely on them as representation of fact. No person in the employment of Spencers has any authority to make or give representation or warranty whatever in relation to this property.

Viewing: Via the Agents
Spencers Agents Ltd, 469 Ecclesall Road, Sheffield S11 8pp | Registered in England No. 7565948