

oakheart



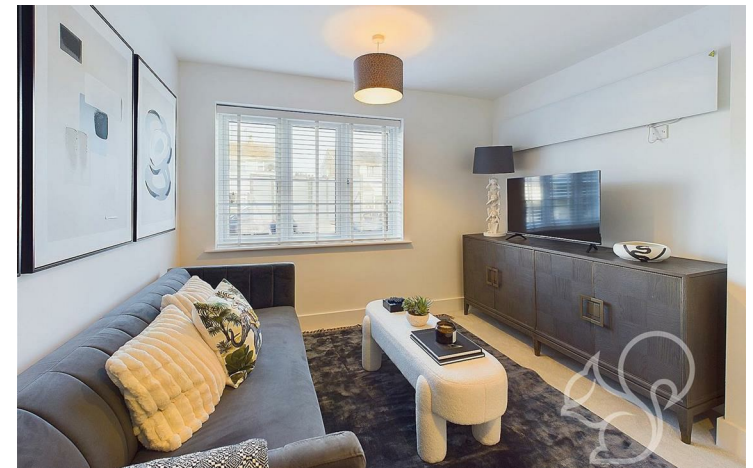
£295,000

Plot 10, Saltmarsh Place, Tollesbury

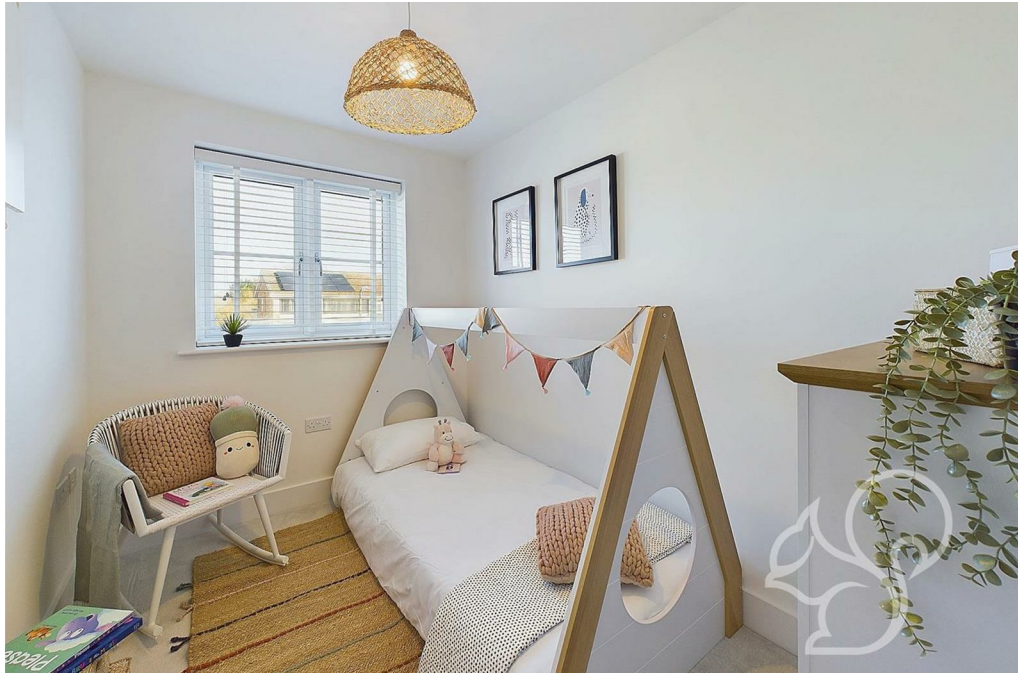
Saltmarsh Place is an exclusive development of 17 beautifully designed homes in the picturesque village of Tollesbury, Essex. This charming community seamlessly blends local architectural styles with modern design elements, offering sustainable and smart living solutions. The development is situated in a prime coastal location, close to local shops, schools, healthcare facilities, and recreational areas like Tollesbury Marina.

This apartment at Saltmarsh Place provides an opportunity to enjoy coastal living at its finest, with easy access to major roads (A12, M11, M25) and train stations for London commuters. The development's focus on sustainability and modern amenities ensures a comfortable and eco-friendly lifestyle in this thriving coastal community.

*Images Depict On-Site Show Home
Completion due Q2 2026








Local Authority:
Maldon District Council

Tenure:
Leasehold

Council Tax Band:
New Build

Energy Efficiency Rating

	Current	Potential
<i>Very energy efficient - lower running costs</i>		
(92 plus) A		
(81-91) B		
(69-80) C		
(55-68) D		
(39-54) E		
(21-38) F		
(1-20) G		
<i>Not energy efficient - higher running costs</i>		
England & Wales	EU Directive 2002/91/EC	

Agents Note: Whilst every care has been taken to prepare these particulars, they are for guidance purposes only. All measurements are approximate and are for general guidance purposes only and whilst every care has been taken to ensure their accuracy, they should not be relied upon.

Oakheart Mersea
01206 382191
mersea@oakheart.co.uk
34a Barfield Rd, West Mersea, Colchester, Essex, CO5 8QT

oakheart