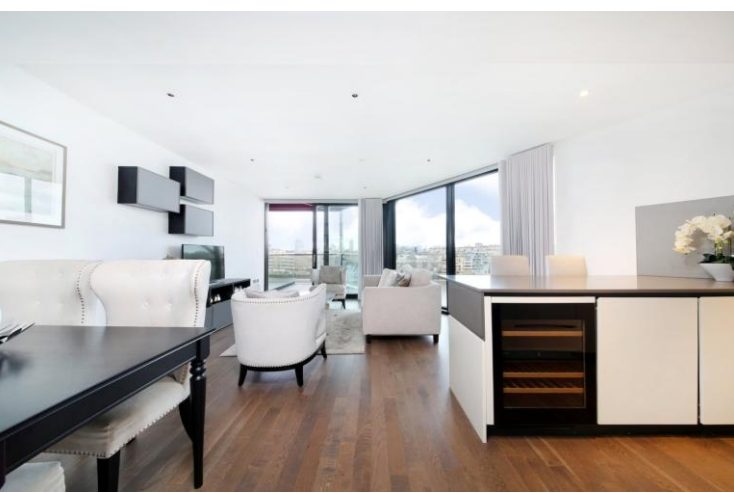




Riverlight Quay  
London, SW11

CHESTERTONS





Chestertons South-West Prime department has the pleasure of introducing to the market this immaculate three-bedroom apartment in the highly sought-after Riverlight Quay, ideally located next to Battersea Power Station. Spanning 1,163 Sq Ft, this beautifully presented riverside home offers the perfect blend of luxury and convenience.

The property comprises three generously sized double bedrooms, a spacious open-plan kitchen and reception area, and a private balcony boasting stunning views over the River Thames. Additional features include secure underground parking, high-spec finishes throughout, and ample built-in storage.

Residents of Riverlight Quay enjoy access to an exceptional range of on-site amenities, including a 24-hour concierge, a private health spa with a state-of-the-art “river view” gym, heated swimming pool, steam room, sauna, Jacuzzi, a cinema screening room, and a virtual golf simulator.

Local amenities include popular spots such as Black Cab Coffee Co, Nine Elms Tavern, and Sainsbury’s, with a Waitrose conveniently located at Embassy Gardens just across the road. The development also benefits from its close proximity to Nine Elms and Battersea Power Station Underground Stations, placing the rest of London within easy reach.

- Immaculate 3-bedroom apartment in Riverlight Quay, Battersea
- 1,163 sq ft of beautifully presented living space
- Spacious open-plan kitchen and reception area
- Private balcony with stunning River Thames views
- Secure underground parking
- Three generous double bedrooms with built-in storage

Asking Price £1,800,000

Energy Efficiency Rating		Current	Potential
100-109	A		
81-100	B	87	87
69-80	C		
55-68	D		
39-54	E		
21-38	F		
1-20	G		

Not energy efficient - higher running costs

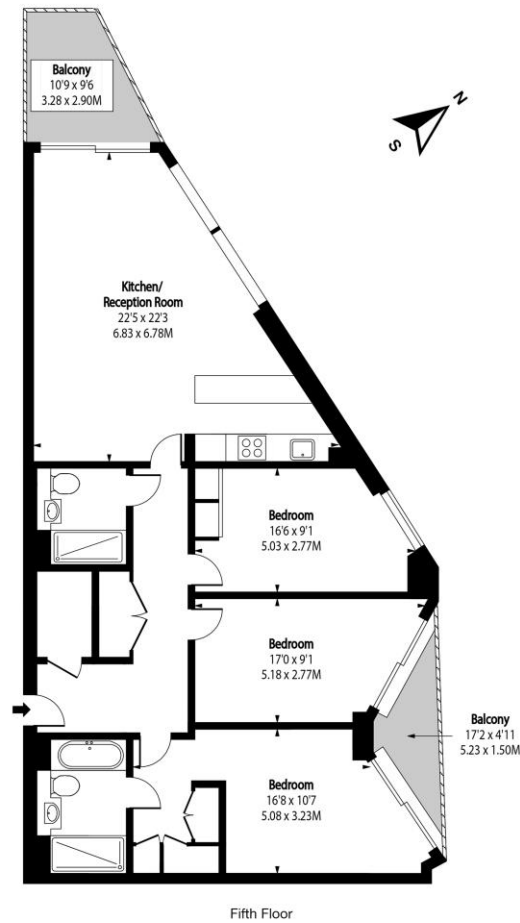
England, Scotland & Wales EU Directive 2002/91/EC

**Tenure:** Leasehold 986 years 5 months  
**Service Charge:** £10,280.24 Per Annum  
**Ground Rent:** £800 Per Annum  
**Local Authority:** London Borough of Wandsworth  
**Council Tax Band:** G

*Chestertons South West Prime Sales*

23a Friars Stile Road  
 Richmond  
 Surrey  
 TW10 6NH  
 swprime@chestertons.co.uk

# Riverlight Quay, SW11



Approx Gross Internal Area **1150 Sq Ft - 106.83 Sq M**

Includes Limited Use Area - 15 Sq Ft  
Drawn in Accordance with IPMS 3B: Residential  
Illustration For Identification Purposes Only - Not to Scale  
[www.homespacestudio.co.uk](http://www.homespacestudio.co.uk) - Ref. No. 54006



Chesterton UK Services Limited trading as Chestertons for themselves and for the vendor of this property whose agents they are, give notice that (i) these particulars do not constitute any part of an offer or contract, (ii) all statements contained within these particulars are made without responsibility on the part of Chestertons or the vendor, (iii) whilst made in good faith, none of the statements contained within these particulars are to be relied upon as a statement or representation of fact, (iv) any intending purchasers must satisfy themselves by inspection or otherwise as to the correctness of each of the statements contained within these particulars, (v) the vendor does not make or give either Chestertons or any person in their employment any authority to make or give representation or warranty whatsoever in relation to this property. Wide angle lenses may be used. ©Copyright Chestertons | Chesterton UK Services Limited | Registered Office 40 Connaught Street, Hyde Park, London W2 2AB Registered Company Number 05334580.



This paper is  
100% recyclable