



Stamford Brook Road, W6

£550,000

This is a two bedroom apartment in a converted church located in Stamford Brook.

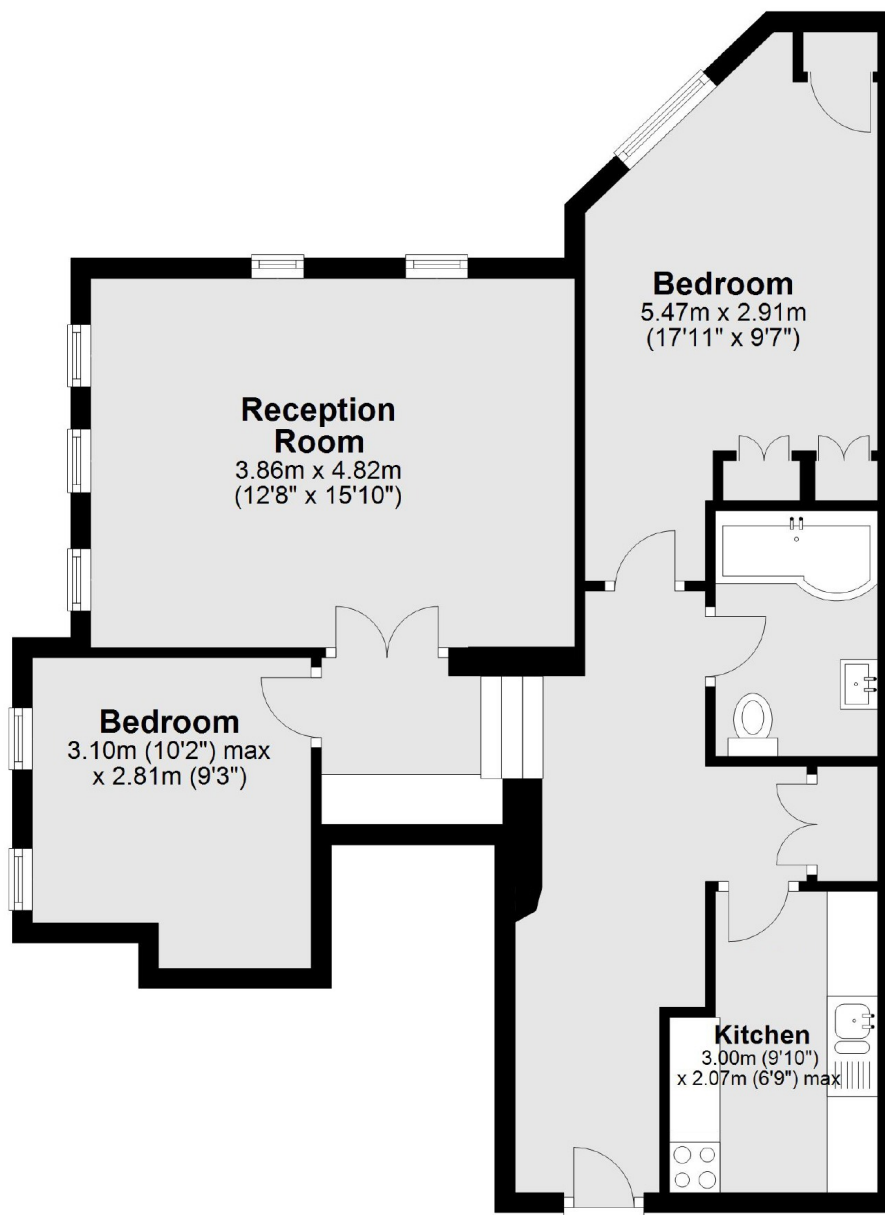
Bursting with charm and character the flat still retains the original brick work and ornate windows. Both bedrooms are a fantastic size and the flat benefits of having a separate reception room. The flat would make for a wonderful home or investment.

St Marys Court is wonderfully located moments from the Chiswick High Road which offers lots of shops, restaurants and bars. Stamford Brook tube station is also close by.

Features

- Two Bedrooms
- Church Conversion
- Separate Kitchen
- Period Features
- No Onward Chain
- Stamford Brook Station

Stamford Brook Road, London, W6



Total area: approx. 65.7 sq. metres (706.8 sq. feet)