



Nant Glas, £230,000

- Semi Detached
- Garage
- Three Bedroom
- Easy Access To M4
- Close to Amenities
- EPC Rating: C



3 1 1



About the property

Welcome to Nant Glas, a modern and beautifully presented three-bedroom semi-detached home situated in the sought-after area of Penllergaer. This fantastic property offers an ideal layout for families and first-time buyers, complete with an integral garage and off-road parking.

Stepping inside, the ground floor features a bright and inviting lounge, perfect for relaxing and unwinding. To the rear sits a spacious kitchen/diner, offering ample room for cooking, dining, and entertaining, with easy access to the garden. Completing the ground floor is a convenient W/C.

Upstairs, you'll find three well-proportioned bedrooms. The master bedroom boasts its own en-suite shower room for added comfort and privacy, while the remaining bedrooms are served by a modern family bathroom.

Offering a practical layout and a desirable location, this lovely home on Nant Glas is perfect for those looking to settle in a peaceful yet well-connected part of Penllergaer.



Accommodation

Ground Floor

Entrance Hall

W/C

Lounge

19' 6" x 9' 10" (5.94m x 3.00m)

Kitchen

15' 10" x 8' 1" (4.83m x 2.46m)

Garage

13' 9" x 8' 4" (4.19m x 2.54m)

First Floor

Landing

Bedroom One

11' 6" Max x 10' 3" Max (3.51m Max x 3.12m Max)

Ensuite

Bedroom Two

11' 3" x 7' 11" (3.43m x 2.41m)

Bedroom Three

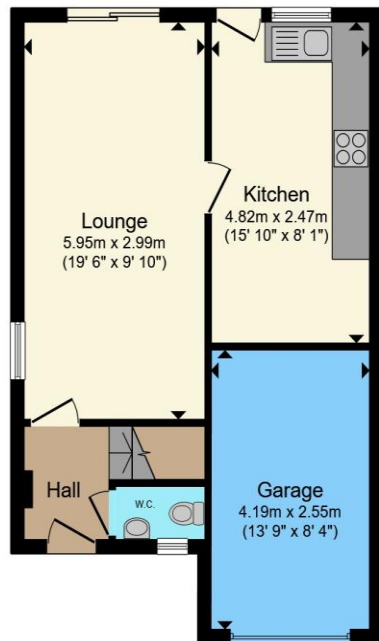
9' 1" x 8' 6" (2.77m x 2.59m)

Bathroom

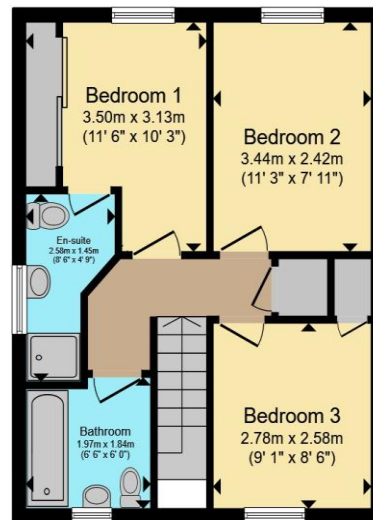
01792 894422

gorseinon@peteralan.co.uk

Floorplan



Ground Floor



First Floor

Total floor area 87.0 m² (937 sq.ft.) approx

This floor plan is for illustrative purposes only. It is not drawn to scale. Any measurements, floor areas (including any total floor area), openings and orientation are approximate. No details are guaranteed, they cannot be relied upon for any purpose and they do not form part of any agreement. No liability is taken for any error, omission or misstatement. A party must rely upon its own inspection(s). Powered by www.propertybox.io

pa peter
alan

Important Information

Note while we endeavour to make our sales details accurate and reliable, if there is any point which is of particular interest to you, please contact the office and we will be pleased to confirm the position for you. We have not personally tested any apparatus, equipment, fixtures, fittings or services and cannot verify they are in working order or fit for their purposes. Nothing in these particulars is intended to indicate that carpets or curtains, furnishings or fittings, electrical goods (whether wired or not). Gas fires or light fittings or any other fixtures not expressly included form part of the property offered for sale. This computer generated Floorplan, if applicable, is intended as a general guide to the layout and design of the property. It is not to scale and should not be relied upon for dimensions. Tenure: We cannot confirm the tenure of the property as we have not had access to the legal documents. The buyer is advised to obtain verification from their solicitor or surveyor.

Peter Alan Limited is registered in England and Wales under company number 2073153, Registered Office is Cumbria House, 16-20 Hockliffe Street, Leighton Buzzard, Bedfordshire, LU7 1GN. VAT Registration Number is 500 2481 05. For activities relating to regulated mortgages and non-investment insurance contracts, Peter Alan Limited is an appointed representative of Connells Limited which is authorised and regulated by the Financial Conduct Authority. Connells Limited's Financial Services Register number is 302221. Most buy-to-let

pa peter
alan