



Marsham Street, SW1P

£750 Per week

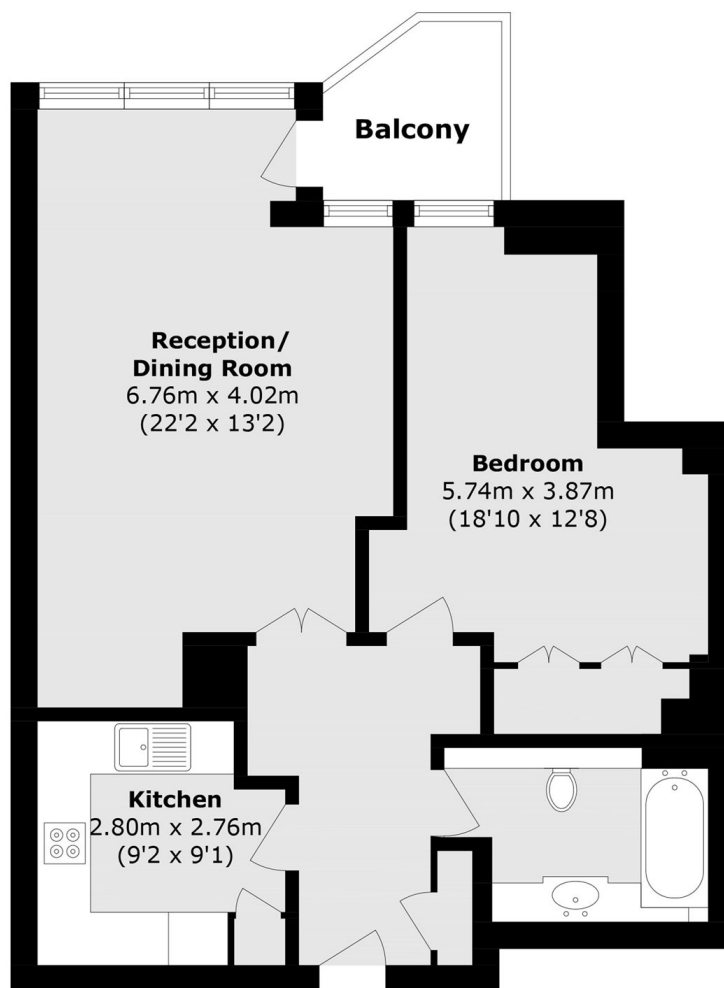
A beautifully presented one-bedroom apartment set within the ever-popular St John's Building, one of Westminster's most sought-after residential developments.

Finished to a high standard throughout, the property offers a bright and spacious reception room, a contemporary fully fitted kitchen, a generously sized double bedroom with excellent storage, and a modern bathroom. The apartment is well proportioned and benefits from quality fixtures and fittings throughout, creating a comfortable and stylish home. Residents of St John's Building enjoy the convenience of a well-maintained development ideally positioned for the amenities, restaurants and transport links of Westminster, Pimlico and Victoria. St James's Park, the River Thames and a number of London's most iconic landmarks are all within easy reach. Available to rent immediately.

Features

- Large Double Bedroom
- Ample Wardrobe Space
- Portered Building
- Great Condition Throughout
- Gym
- Close to the Amenities of Westminster

Marsham Street, London, SW1P



Third Floor

Total area (approx.): 62.5 sq. m (672.7 sq. ft)

Balcony Total (approx.): 2.6 sq. m (27.9 sq. ft)