



## Toledo Road

Southend-on-Sea

- TWO BEDROOMS
- TOP FLOOR FLAT
- OFF ROAD PARKING
- LOW YEARLY CHARGES



## Guide Price £160,000

**\*\*OFF ROAD PARKING\*\*** A two bedroom top floor flat located close to Southend City Centre.



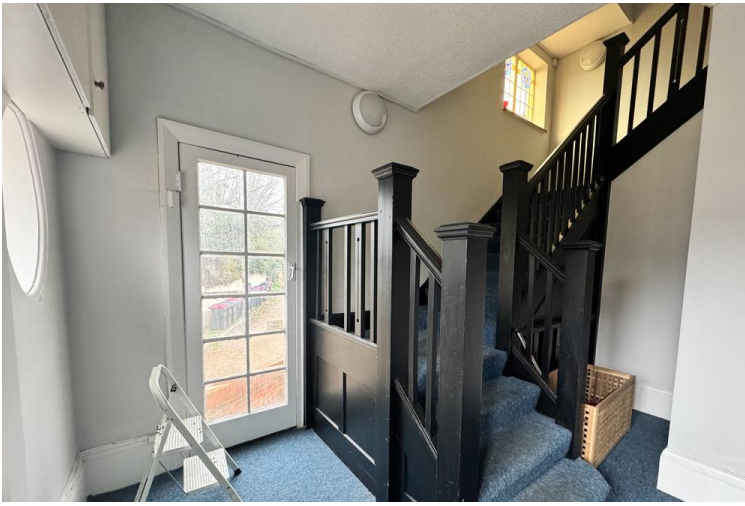


A two bedroom top floor apartment situated at the end of Toledo Road on the corner of Quebec Avenue, located close to Southend City Centre and all its amenities, including its train stations that provide direct links to London.

Providing accommodation that consists of two bedrooms, a kitchen and bathroom. Externally the property has one demised parking space.

We believe this would be a great purchase for those who are looking to get on the property ladder or investors.

Offered to the market with vacant possession as well as a 160 year lease.



#### **HALL**

#### **LOUNGE**

14' 3" x 13' 9" (4.34m x 4.19m)

#### **KITCHEN**

11' 9" x 11' 6" (3.58m x 3.51m)

#### **BEDROOM ONE**

12' 9" x 10' 8" (3.89m x 3.25m)

#### **BEDROOM TWO**

12' 0" x 7' 9" (3.66m x 2.36m)

#### **BATHROOM**

#### **OFF ROAD PARKING**

#### **TENURE**

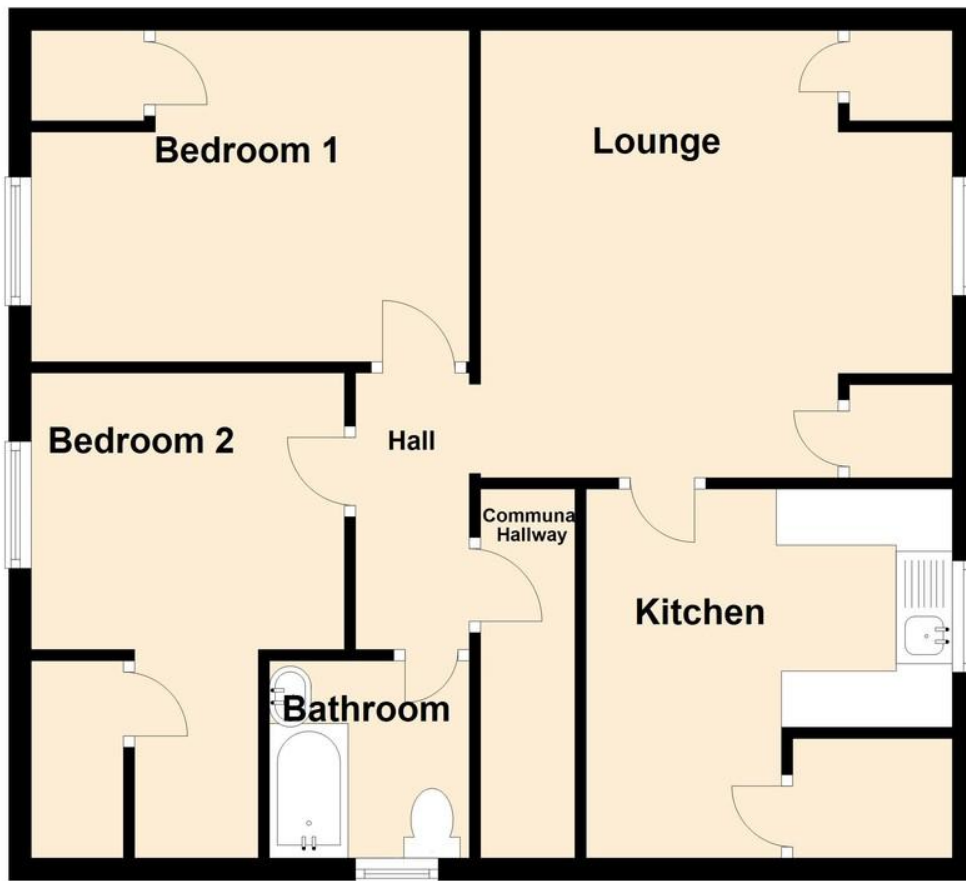
LEASE REMAINING - 160 YEARS

GROUND RENT - £100 PER ANNUM

EPC - D

COUNCIL TAX BAND - A

These particulars are accurate to the best of our knowledge but do not constitute an offer or contract. Photos are for representation only and do not imply the inclusion of fixtures and fittings. The floor plans are not to scale and only provide an indication of the layout.



Regulated by RICS

t. 01702 34 11 77  
More than an estate agent  
[www.hairandson.co.uk](http://www.hairandson.co.uk)

**Residential Sales**  
190 London Road  
Southend-On-Sea  
Essex SS1 1PJ

