



Louise Walk Green Lane

Hemel Hempstead, HP3 0JZ

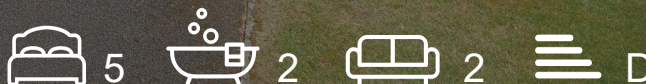
Offers Over £1,150,000

Tucked away on the peaceful corner of Green Lane and Louise Walk, just a short stroll from Bovingdon's charming village green and cricket pitch, this beautifully maintained detached home offers a perfect blend of space, privacy, and village lifestyle.

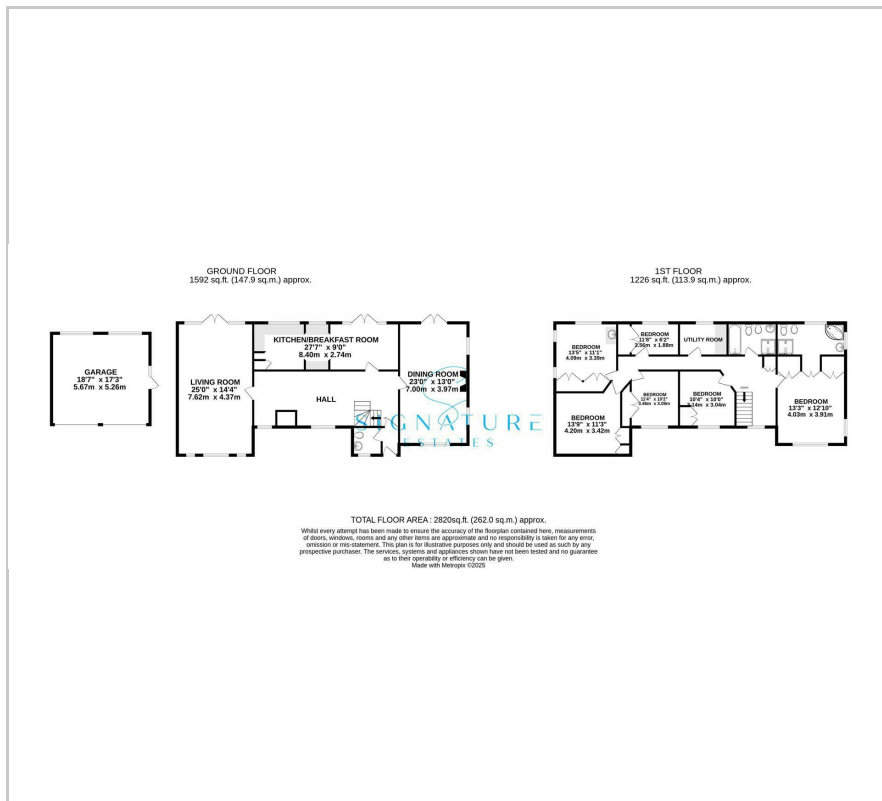
- Spacious Detached Family Home
- Triple Aspect Living And Dining Rooms
- Open Plan Kitchen/Breakfast Room
- Five Double Bedrooms and Office On First Floor
- Sizeable Master Bedroom with En Suite
- Beautiful Landscaped Garden
- Sweeping Driveway With Ample Parking And Double
- Prime Village Location

Viewing

Please contact our Bovingdon Office on 01923262666 if you wish to arrange a viewing appointment for this property or require further information.



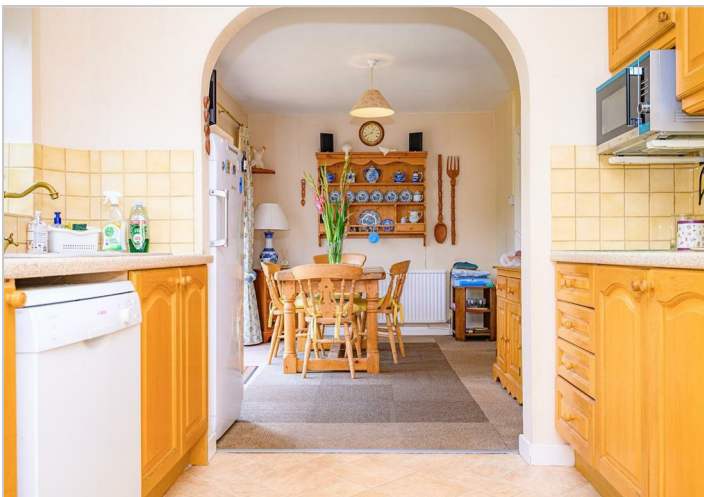
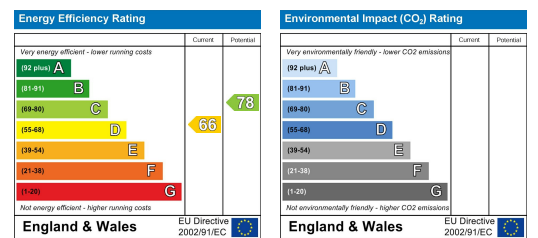
Floor Plan



Area Map



Energy Efficiency Graph



These particulars, whilst believed to be accurate are set out as a general outline only for guidance and do not constitute any part of an offer or contract. Intending purchasers should not rely on them as statements of representation of fact, but must satisfy themselves by inspection or otherwise as to their accuracy. No person in this firm's employment has the authority to make or give any representation or warranty in respect of the property.

10 High Street, Bovington, Hertfordshire, HP3 0HG

T: 01923262666 | E: bovingdon@signaturestates.co.uk | www.signaturestates.co.uk