

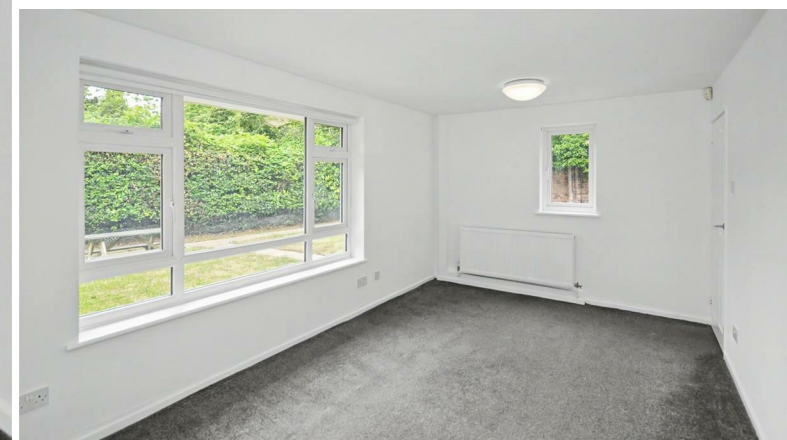
ehB
RESIDENTIAL

Your Property - Our Business



17, Warwick New Road, Leamington Spa

£1,700 Per
Calendar Month



A newly refurbished, three bedroom Bungalow set in a large plot of land, situated by the entrance to Warwickshire College. Unfurnished & Available 15th July

Living Room

16'11" x 9'11" (5.17 x 3.04)

Kitchen

10'3" x 11'1" (3.13 x 3.38)

Bedroom 1

10'4" x 12'9" (3.16 x 3.89)

Bedroom 2

10'4" x 9'11" (3.15 x 3.04)

Bedroom 3 / Study

7'3" x 8'7" (2.23 x 2.64)

Shower Room

5'6" x 10'3" (1.69 x 3.14)

Garage

10'8" x 16'10" (3.26 x 5.14)

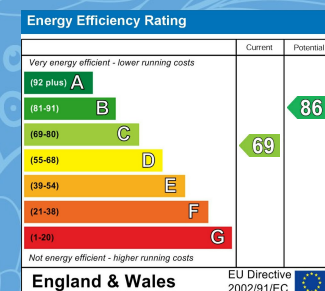


Your Property - Our Business

- Residential Estate Agents
- Lettings and Property Managers
- Land and New Homes Agents

Leamington Spa Office
Somerset House
Clarendon Place
Royal Leamington Spa
CV32 5QN

01926 881144 ehbresidential.com



Also at: Warwick, 17-19 Jury St, Warwick CV34 4EL