



**Guide Price**  
**£230,000**

**Freehold**

3x  1x  2x 

**Northdown Road,  
Broadstairs, Kent, CT10**

*Wards*  
Helping you move forwards



## Main features

- Chain free
- Perfect family home
- Off road parking to the front
- Beautiful rear views
- Situated in a popular residential location

## Accommodation

### GROUND FLOOR

Entrance  
Porch  
Hallway  
Dining Room: 16'10 x 12'0 (5.13m x 3.66m)  
Lounge : 12'2 x 10'6 (3.71m x 3.20m)  
Kitchen: 13'4 x 5'8 (4.07m x 1.73m)

### FIRST FLOOR

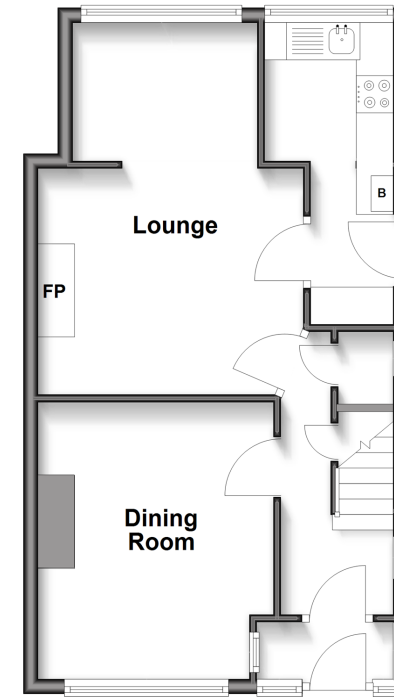
Landing  
Bedroom 1 : 12'7 x 10'0 (3.84m x 3.05m)  
Bathroom  
Bedroom 2 : 12'0 x 10'2 (3.66m x 3.10m)  
Bedroom 3 : 7'8 x 5'6 (2.34m x 1.68m)

### OUTSIDE

Garden

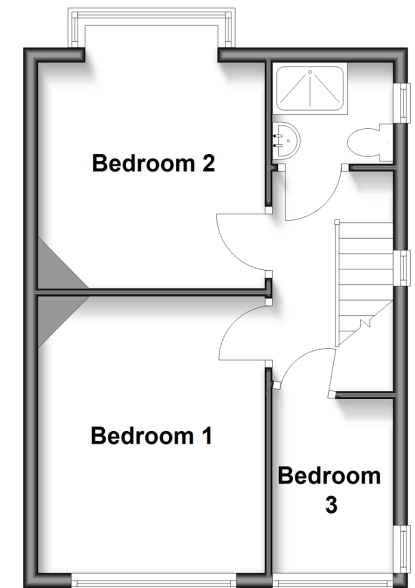
### Ground Floor

Approx. 41.7 sq. metres (448.5 sq. feet)



### First Floor

Approx. 33.6 sq. metres (361.5 sq. feet)



**Call Broadstairs - 01843 602546 ■ [wardsof Kent.co.uk](http://wardsof Kent.co.uk)**

- Legal advice should be taken to verify fixtures/fittings, planning, alterations and/or lease details
- Appliances & services are untested, dimensions are approximate and floor plans are not to scale



10229630/20260121/LM/BW