

T₂m

Flat 5 33 Eardley Road £2,950 PCM

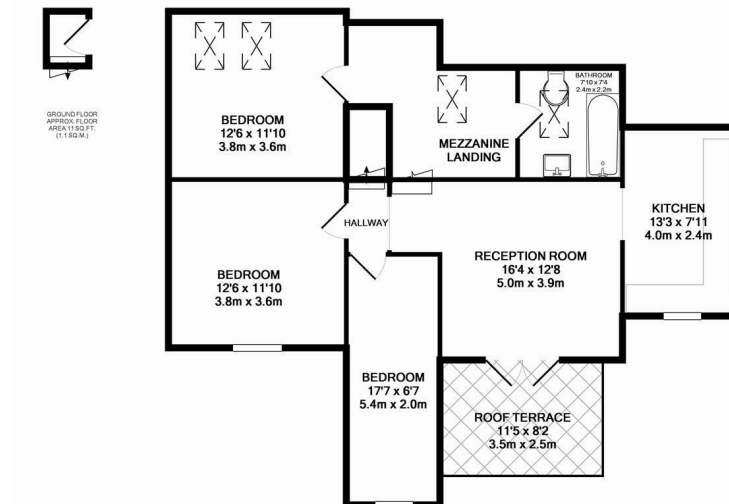


Contact

02086400146

admin@time2move.com

www.time2move.com



1ST FLOOR
APPROX. FLOOR
AREA 869 SQ.FT.
(80.8 SQ.M.)

EARDLEY ROAD
TOTAL APPROX. FLOOR AREA 881 SQ.FT. (81.8 SQ.M.)

Whilst every attempt has been made to ensure the accuracy of the floor plan contained here, measurements of doors, windows, rooms and any other items are approximate and no responsibility is taken for any error, omission, or mis-statement. This plan is for illustrative purposes only and should be used as such by any prospective purchaser. The services, systems and appliances shown have not been tested and no guarantee as to their operability or efficiency can be given.
Made with Metropix ©2015

Local Authority
Wandsworth Borough Council

Council Tax Band C

EPC Rating C