



9 Lugano Close

ST5 2QF

£295,000



2



1



1



D



STEPHENSON BROWNE

Offered with NO UPWARD CHAIN, this beautifully presented detached bungalow occupies a desirable position within the sought-after residential cul-de-sac of Lugano Close, Newcastle-under-Lyme, conveniently located within walking distance of local shops, amenities and excellent transport links. The property is entered via a welcoming entrance hall which flows into a central hallway, providing access to all accommodation. A generously proportioned reception room offers an elegant and versatile living and dining space, ideal for both relaxed living and entertaining.

There are two well-appointed double bedrooms, both positioned to the rear of the property for added privacy. The principal bedroom benefits from fitted wardrobes and direct access to the rear of the property, while the second bedroom features a bay window overlooking the rear garden, allowing for an abundance of natural light.

The kitchen is finished to a high standard, offering an impressive range of storage solutions, including a dedicated cupboard with plumbing for a washing machine and tumble dryer. Integrated appliances include a double oven, microwave and induction hob, dishwasher, and the kitchen also provides convenient access to the side of the property.

The bathroom suite is of an excellent size and comprises both a separate bath and walk-in shower, complemented by an airing cupboard which provides additional storage.

Externally, the property is designed for low-maintenance living, with paved outdoor areas throughout. Ample off-road parking is available to the front and side for up to four vehicles, alongside a detached garage featuring an electric shutter door. This exceptional bungalow combines quality, comfort and convenience in a prime location, making it an ideal choice for buyers seeking refined single-storey living. Early viewing is strongly advised to fully appreciate the accommodation on offer.

Council Borough: Newcastle-Under-Lyme

Council Tax Band: C

Tenure: Freehold



Ground Floor

Entrance Hall

2'10" x 3'3"

Hallway

2'10" x 17'4"

Living/Dining Room

10'10" x 20'11"

Kitchen

12'7" x 8'11"

Bathroom

7'8" 9'7"

Airing Cupboard

Bedroom One (Built in wardrobes)

10'10" x 13'1"

Bedroom Two

12'3" x 11'6"

Detached Garage

8'6" x 16'5"

Stephenson Browne AML Disclosure

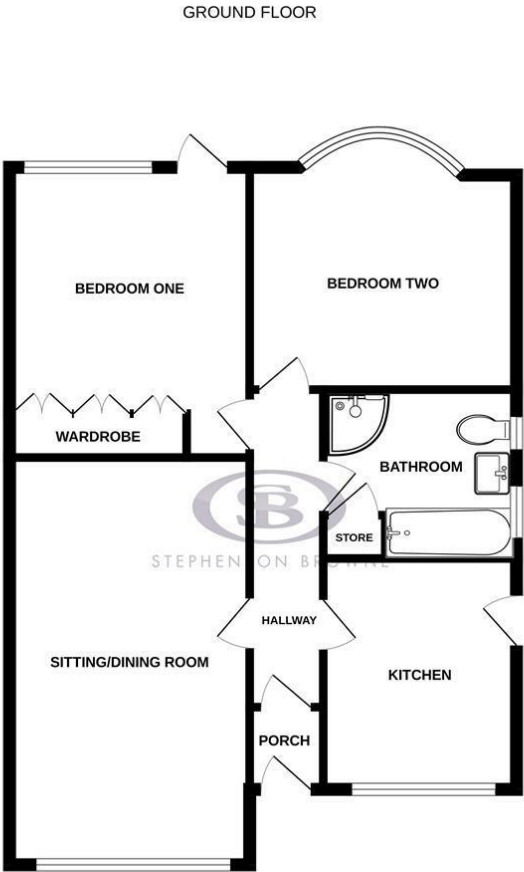
Agents are required by law to conduct Anti-Money Laundering checks on all those buying a property. Stephenson Browne charge £49.99 plus VAT for an AML check per purchase transaction . This is a non-refundable fee. The charges cover the cost of obtaining relevant data, any manual checks that are required, and ongoing monitoring. This fee is payable in advance prior to the issuing of a memorandum of sale on the property you are seeking to buy.



- Detached bungalow located in a quiet residential cul-de-sac
- Offered for sale with no upward chain
- Two double bedrooms, both positioned to the rear of the property
- Principal bedroom with fitted wardrobes and direct external access
- Spacious and well-proportioned living / dining reception room
- Modern kitchen with extensive storage and integrated appliances
- Bathroom with separate bath and shower plus airing cupboard
- Low-maintenance, fully paved exterior spaces
- Off-road parking to the front and side for multiple vehicles
- Ideally positioned within walking distance of local amenities and excellent public transport links

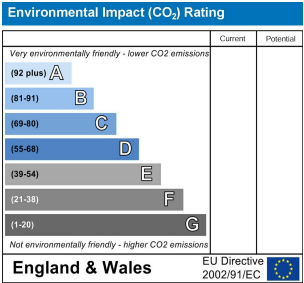
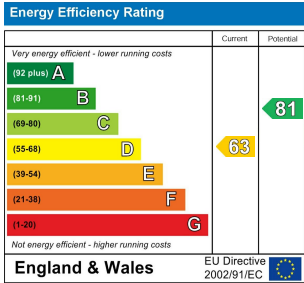


Floor Plan



Whilst every attempt has been made to ensure the accuracy of the floorplan contained here, measurements of doors, windows, rooms and any other items are approximate and no responsibility is taken for any error, omission or mis-statement. This plan is for illustrative purposes only and should be used as such by any prospective purchaser. The services, systems and appliances shown have not been tested and no guarantee as to their operability or efficiency can be given.
Made with Metropix ©2026

Area Map



Viewing

Please contact our Newcastle Office on 01782 625734 if you wish to arrange a viewing appointment or require further information.

NOTICE: Stephenson Browne for themselves and for the vendors or lessors of this property whose agents they are give note that: (1) the particulars are set out as a general guideline only for the guidance of intending purchasers or lessees. and do not constitute, nor constitute part of, an offer or contract; (2) all descriptions, dimensions, references to condition and necessary permissions for use and occupation, and other details are given in good faith and are believed to be correct but any intending purchasers or tenants should not rely on them as statements or representations of fact but must satisfy themselves by inspection or otherwise as to be the correctness of each theme; (3) no person in the employment of Stephenson Browne has any authority to make representation or warranty in relation to this property; (4) fixtures and fittings are subject to a formal list supplied by the vendors solicitor. Referring to: Move with Us Ltd Average fee: £123.64