

CHRISTOPHER SCALES

POWERED BY
exp UK



Jurys Corner Close, Kingskerswell

£159,950

In a popular development in the sought-after village of Kingskerswell, the property offers a beautifully presented retirement bungalow which has benefitted from many recent improvements and featuring an enclosed garden at the rear.

Jurys corner is conveniently situated for the amenities of Kingskerswell and number 12 bus route linking the towns of Newton Abbot, Torquay, Paignton and Brixham. The development is accessed from Barnhill Road via a communal space which offers parking on a first come first served basis and gardens with an attractive stream and water feature. At the front is a lawned garden with concrete pathway leading to the entrance porch. Once inside, the entrance hall with utility cupboard housing the washing machine opens into a fantastic open plan sitting room and kitchen with double doors opening onto the enclosed rear garden which enjoys a southerly aspect. There are two bedrooms (one double and one single) and a modern shower room/W.C. Heating is provided via electric radiators and windows are uPVC double glazed. An internal inspection is highly recommended in order to appreciate this superb property and the convenient village location.

The village of Kingskerswell lies between Torquay and Newton Abbot and offers a range of local amenities including general convenience store, Health Centre & Pharmacy, Hair Salons, pubs, ALDI supermarket and Kingskerswell is also on a main bus route and offers superb transport links for Torbay and A380 for Exeter, M5 & beyond.

THE ACCOMMODATION COMPRISES, Canopied entrance to:

ENTRANCE PORCH - 1.12m x 0.86m (3'8" x 2'10") Light point, UPVC obscure glazed door to:

HALLWAY Textured ceiling with pendant light point, wall mounted electric heater, utility cupboard with the washing machine and with shelving over. Opening to:

OPEN PLAN SITTING ROOM & KITCHEN - 5.16m x 4.6m (16'11" x 15'1") Maximum measurements, L shaped.

SITTING ROOM- Coved textured ceiling with light point, uPVC double doors opening onto the rear garden, wall mounted electric heater, TV connection point,

KITCHEN - Skylight and inset spotlights, fitted kitchen comprising a range of base and drawer units with work surfaces over, inset sink and drainer with mixer tap over, eyelevel cabinets, built-in electric hob, built-in fridge and freezer.

BEDROOM ONE - 3.25m x 3m (10'8" x 9'10") Coved textured ceiling with pendant light point, UPVC double glazed window to front aspect, radiator.

BEDROOM TWO - 3.15m x 1.78m (10'4" x 5'10") Textured ceiling, pendant light point, uPVC double glazed window to front aspect.

SHOWER ROOM/WC Textured ceiling with Velux window, large shower cubicle with sliding door and electric shower, wall mounted wash hand basin with splashback, W.C, wall mounted electric panel heater.





OUTSIDE

FRONT - To the front of the property is a lawn garden with concrete pathway leading to the front door. Storage cupboard with shelving and housing electric meter and consumer unit.

REAR - To the rear of the property and access from the sitting room double doors is a low maintenance enclosed garden, paving and timber fence with timber garden shed, outside tap and extendable sun blind.

USEFUL INFORMATION

Tenure - Freehold

Age - 1980's

Heating - Electric heating

Drainage - Mains

Windows - Double glazed

Council Tax - B

EPC Rating - D/60 Potential B/89

Broadband - 1800

Mobile - Signal strength (0-4) EE: 4, Three: 3, O2: 4, Vodafone: 3

Minimum Age Requirement 58yrs

Service Charge £185.25 (2025/2026)

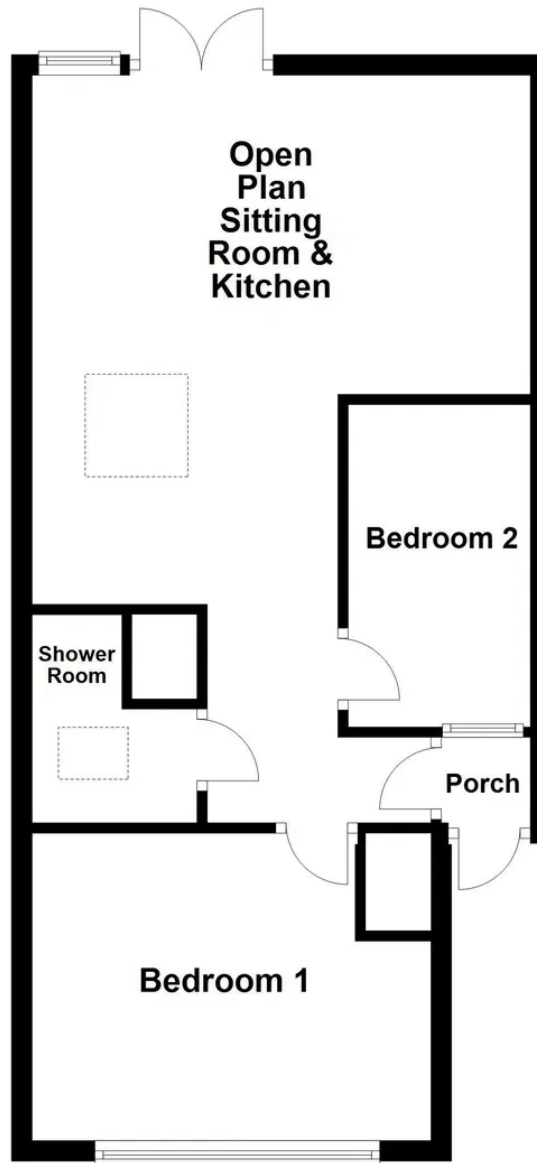
No Ground Rent

Pets Considered

Please note that this property is subject to a solar panel installation and further information is available on request.



Floor Plan



CHRISTOPHER SCALES

POWERED BY
exp UK

Tel No - [07713352747](tel:07713352747)
Email - christopher.scales@exp.uk.com
Website - christopherscales.exp.uk.com