

clever



8 Apsley Road

Mutley, Plymouth, PL4 6PJ

£775,000



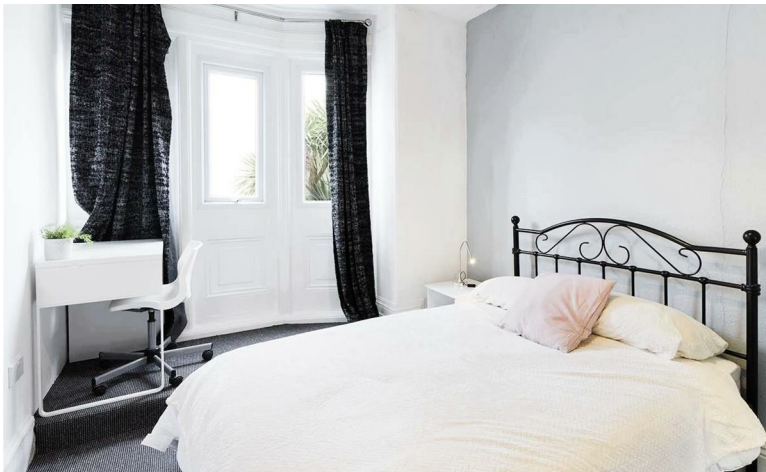
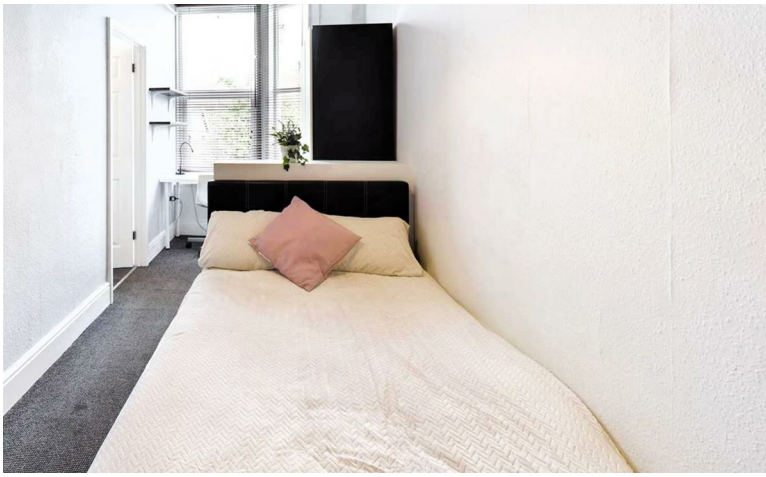
Situated on Apsley Road in the vibrant area of Mutley, close to the university & city centre is this impressive imposing end terrace house presents a remarkable opportunity for investors seeking a high-yield property. Spanning an expansive 5,640 square feet, this imposing period property boasts an exceptional layout, featuring 15 well-appointed bedrooms and 15 bathrooms, making it an ideal choice for a House in Multiple Occupation (HMO).

The property is strategically located in a central area, providing easy access to local amenities, transport links, university and the lively atmosphere of Plymouth. With off-road parking available, convenience is assured for residents.

Currently generating an annual income of £93,240, this property offers a strong yield, making it a sound investment for those looking to expand their portfolio. The combination of its size, location, and income potential makes this property a rare find in the market.

Whether you are an experienced investor or new to the property scene, this end terrace house on Apsley Road is a compelling option that promises both comfort and financial return. Do not miss the chance to explore this outstanding investment opportunity in the heart of Plymouth.





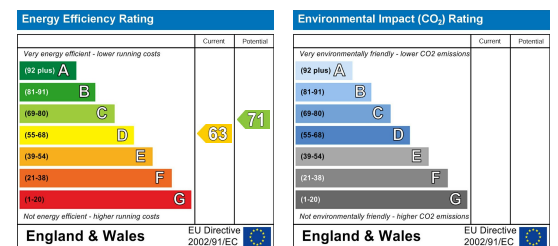
Area Map



Floor Plans



Energy Efficiency Graph



These particulars, whilst believed to be accurate are set out as a general outline only for guidance and do not constitute any part of an offer or contract. Intending purchasers should not rely on them as statements of representation of fact, but must satisfy themselves by inspection or otherwise as to their accuracy. No person in this firm's employment has the authority to make or give any representation or warranty in respect of the property.

2 Old Town Street, Plymouth, PL1 1DP

Tel: 01752421911 Email: sales@stayclever.co.uk <https://www.stayclever.co.uk>