



WOODFORD HOUSE, SW6

£600,000

Stylish one-bedroom apartment in the sought-after Chelsea Creek, offering peaceful waterside living with luxury resident facilities including a spa, pool, sauna, steam room and gym. Ideally located just 0.1 miles from Imperial Wharf Overground and within walking distance of Fulham Broadway. Long leasehold.

- 667 Sq/Ft
- 1 Bedroom
- On-site leisure facilities
- Concierge
- Good sized balcony
- 0.1m to Imperial Wharf station

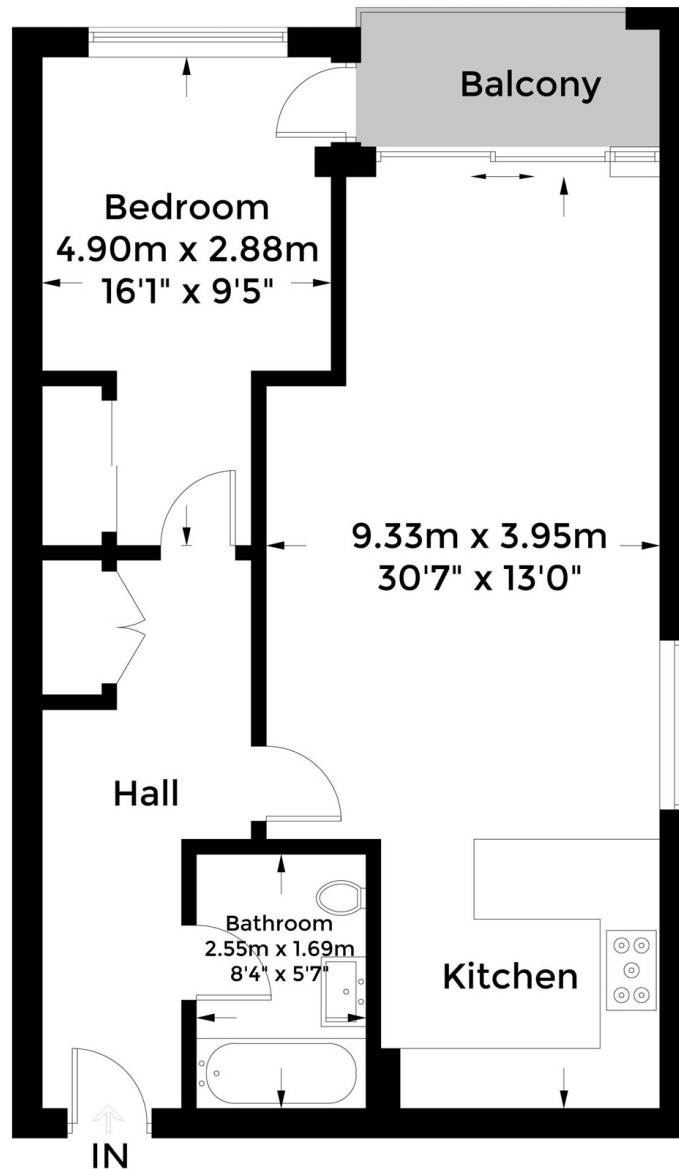


ABOUT THE HOME

Residents will have exclusive access to the Spa in Chelsea Creek with swimming pool, sauna, steam room, treatment room and fully equipped gymnasium. Fulham Broadway is within walking distance but Imperial Wharf Overground is 0.1m. Long Leasehold.







Second Floor

Approximate Gross Internal Area = 62 sq m / 667 sq ft

This floor plan is created by visual Walkthrough™ "Virtual 360".
Life Residential except no responsibility for accuracy and recommend this should only be used as a guide and should not form part of any legal document or be used to purchase flooring or floor covering.

LiFE RESIDENTIAL

11 Flagstaff House, London,
SW8 2LZ

Sales: 020 7476 1408

Lettings: 020 7582 7989

Energy Rating: C. We aim to make our particulars both accurate and reliable. However they are not guaranteed; nor do they form part of an offer or contract. If you require clarification on any points then please contact us, especially if you're traveling some distance to view. Please note that appliances and heating systems have not been tested and therefore no warranties can be given as to their good working order.