

Directions

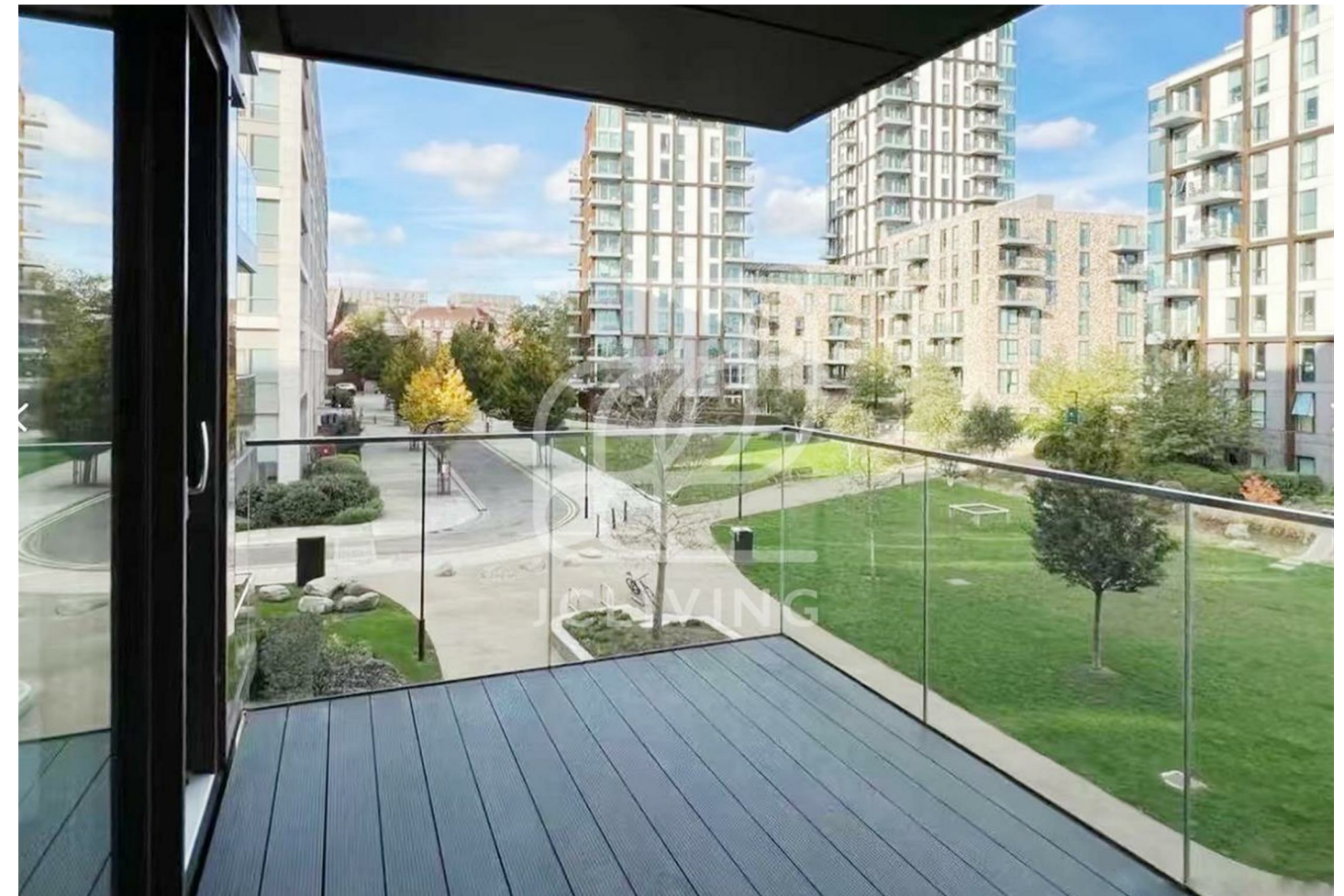
Viewings

Viewings by arrangement only. Call 02033696888 to make an appointment.

EPC Rating

B

Energy Efficiency Rating		Current	Potential
Very energy efficient - lower running costs			
(92 plus) A			
(81-91) B		84	84
(69-80) C			
(55-68) D			
(39-54) E			
(21-38) F			
(1-20) G			
Not energy efficient - higher running costs			
England & Wales		EU Directive 2002/91/EC	



B2.12 / 2 BED	987 sq ft	91.7 sqm
Apartment Area	896 sq ft	83.2 sqm
External Area	91 sq ft	8.5 sqm
Kitchen/Living Area	16'5" x 22'0"	5.0 x 6.7
Bedroom 1	13'1" x 9'10"	4.0 x 3.0
Bedroom 2	13'5" x 13'5"	4.1 x 4.1
Balcony	8'2" x 11'6"	2.5 x 3.5

NZ125, Flat 188 Hartingtons Court, Coster Avenue, London, N4 2WQ

£3,500 Per Month

Flat 188 Hartingtons Court, Coster Avenue, London N4

7AWQ



Council Tax Band:

